

Marsalforn



Level 7
Level 6
Level 5
Level 4
Level 3
Level 2
Level 1

SCALE 1 : 100

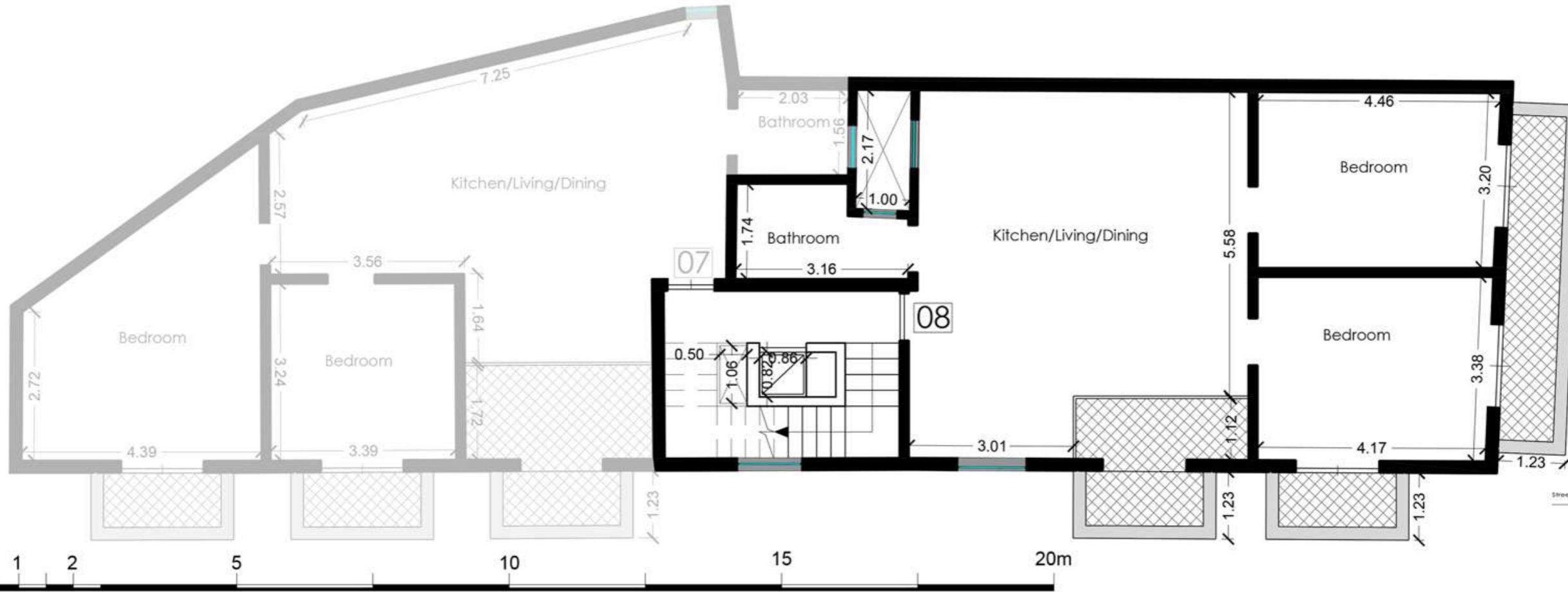
SCALE 1 : 100

Apartment 07  
Fourth Floor (Level 5)

Artistic Impression Only  
Beams may protrude with  
minimum headroom of 2.1m

Internal : 81 m<sup>2</sup> External : 16 m<sup>2</sup>  
Total Area : 97 m<sup>2</sup> circa

Marsalforn



SCALE 1 : 1 0 0

SCALE 1 : 1 0 0

# Apartment 08 Fourth Floor (Level 5)

Artistic Impression Only  
Beams may protrude with  
minimum headroom of 2.1m

Internal : 81 m<sup>2</sup> External : 17 m<sup>2</sup>  
Total Area : 98 m<sup>2</sup> circa



Apartment 09  
Fifth Floor (Level 6)

Artistic Impression Only  
Beams may protrude with  
minimum headroom of 2.1m

Internal : 81 m<sup>2</sup> External : 16 m<sup>2</sup>  
Total Area : 97 m<sup>2</sup> circa



**Apartment 10**  
**Fifth Floor (Level 6)**

Artistic Impression Only  
 Beams may protrude with  
 minimum headroom of 2.1m

Internal : 81 m<sup>2</sup> External : 17 m<sup>2</sup>  
 Total Area : 98 m<sup>2</sup> circa