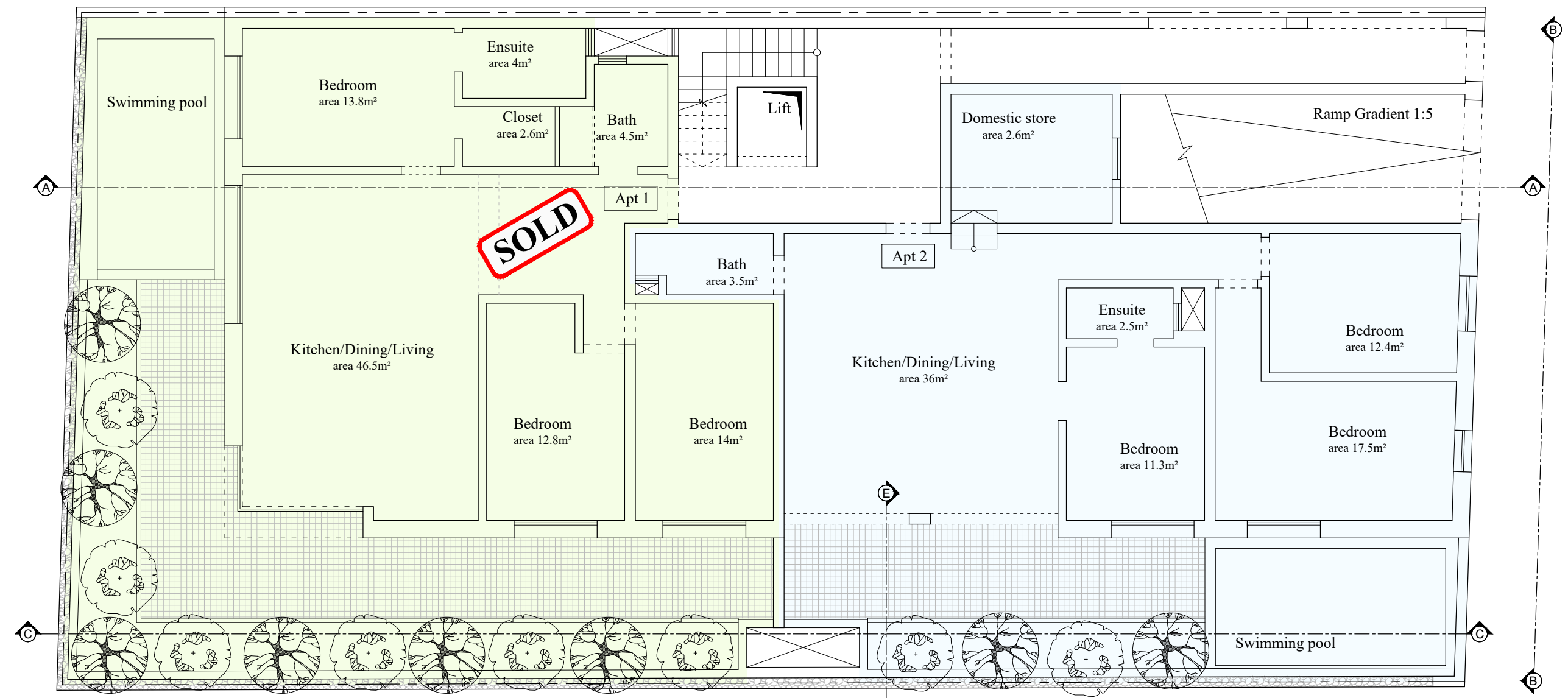


Approved Basement level  
Scale 1:100 (No changes)

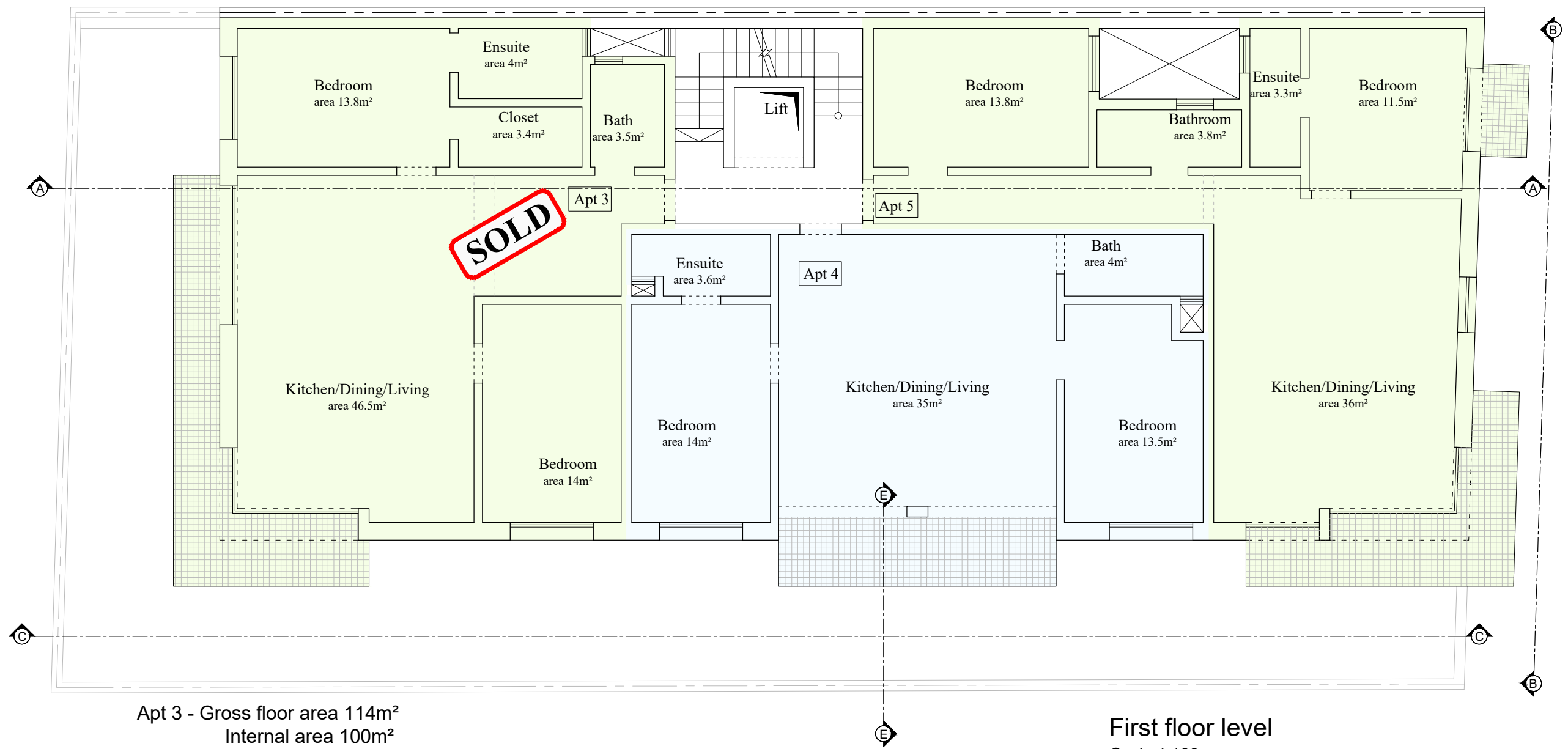
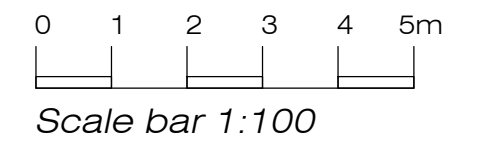
0 1 2 3 4 5m

Scale bar 1:100



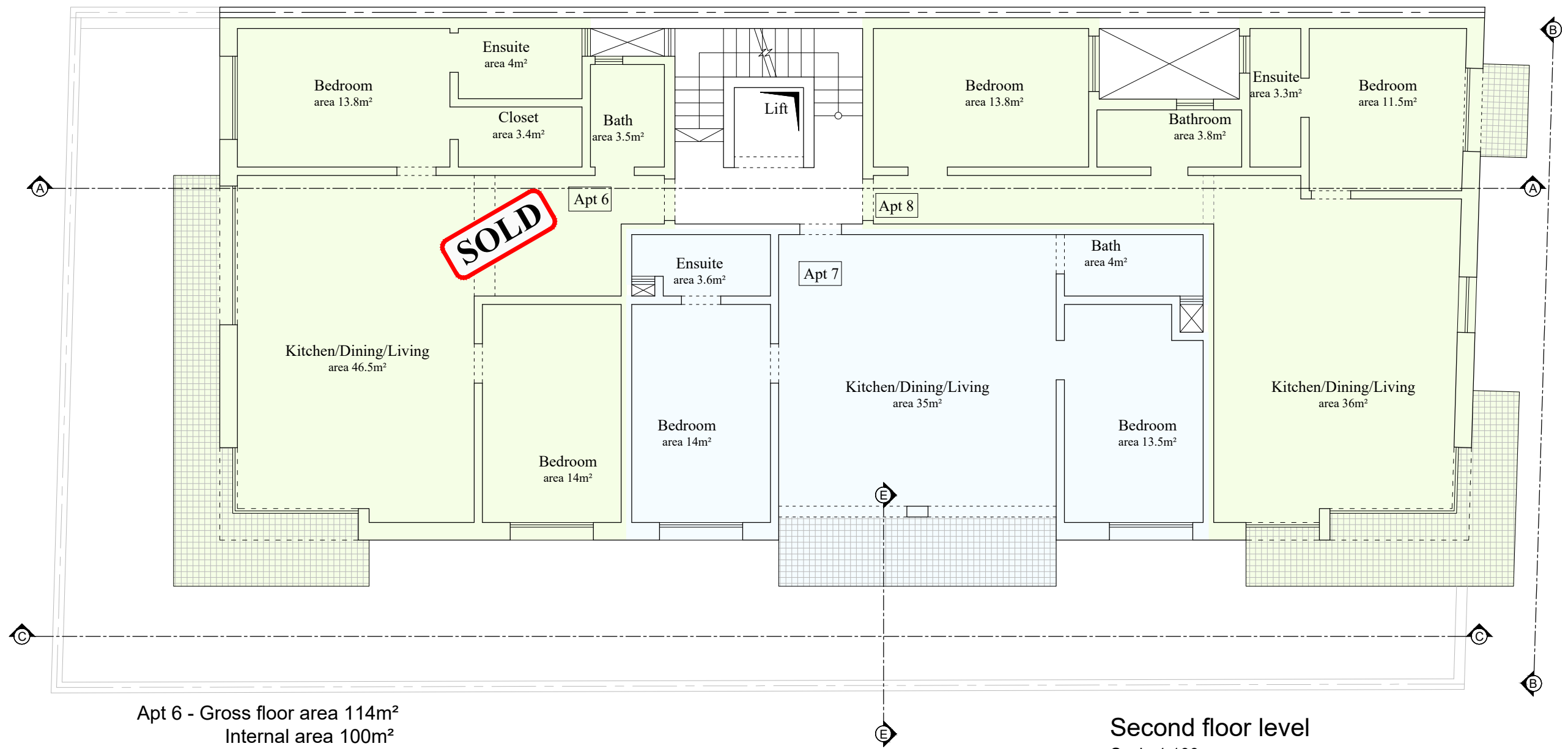
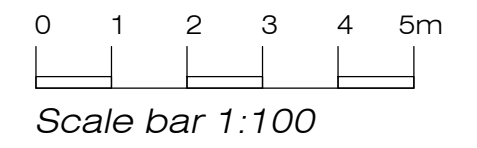
Apt 1 - Gross floor area 202m<sup>2</sup>  
Internal area 117m<sup>2</sup>  
Apt 2 - Gross floor area 164m<sup>2</sup>  
Internal area 117m<sup>2</sup>

Ground floor level  
Scale 1:100



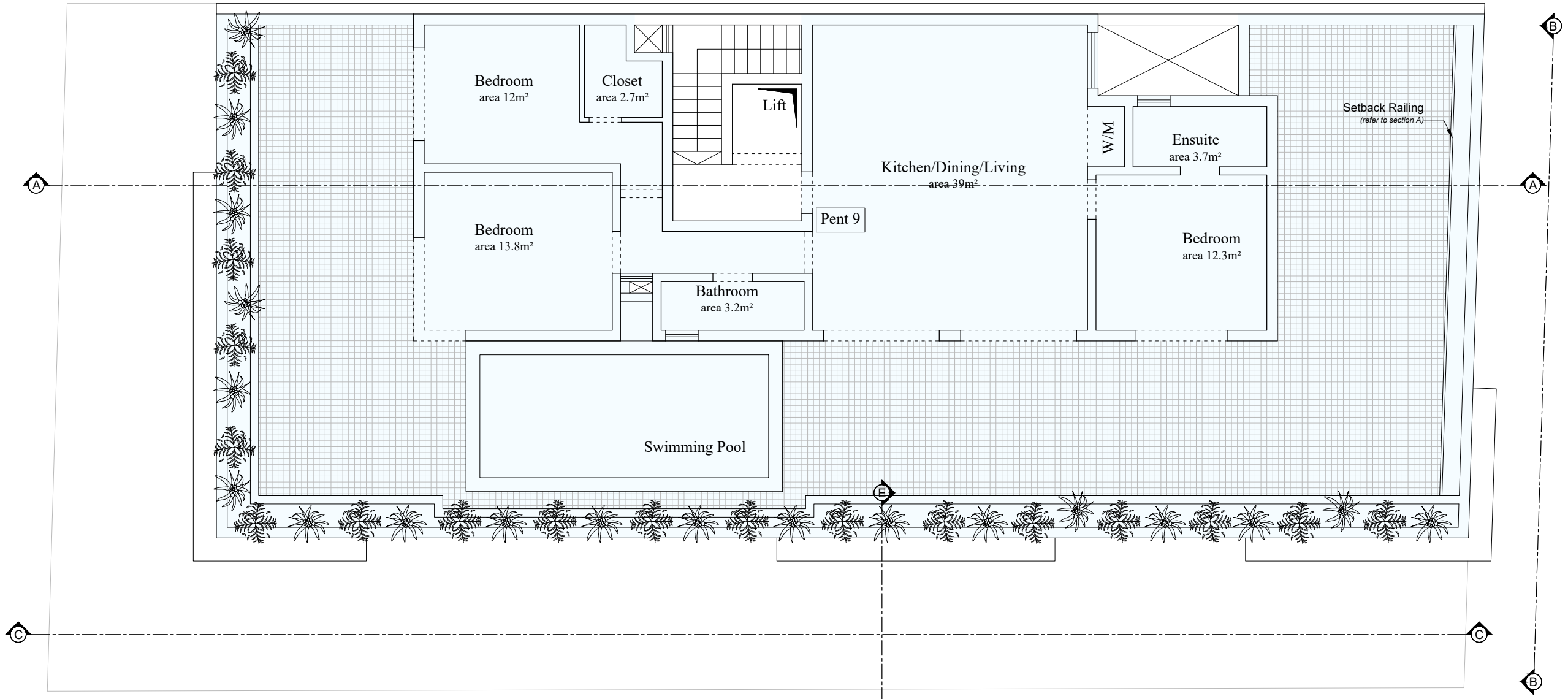
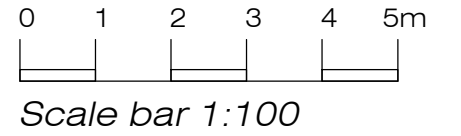
Apt 3 - Gross floor area 114m<sup>2</sup>  
Internal area 100m<sup>2</sup>  
Apt 4 - Gross floor area 90m<sup>2</sup>  
Internal area 81m<sup>2</sup>  
Apt 5 - Gross floor area 105m<sup>2</sup>  
Internal area 91m<sup>2</sup>

First floor level  
Scale 1:100



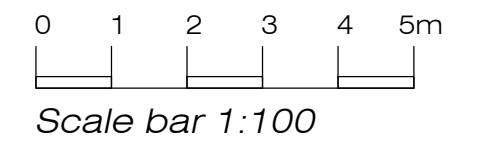
Apt 6 - Gross floor area 114m<sup>2</sup>  
 Internal area 100m<sup>2</sup>  
 Apt 7 - Gross floor area 90m<sup>2</sup>  
 Internal area 81m<sup>2</sup>  
 Apt 8 - Gross floor area 105m<sup>2</sup>  
 Internal area 91m<sup>2</sup>

Second floor level  
 Scale 1:100



Penthouse 9 - Gross floor area 288m<sup>2</sup>  
Internal area 110m<sup>2</sup>

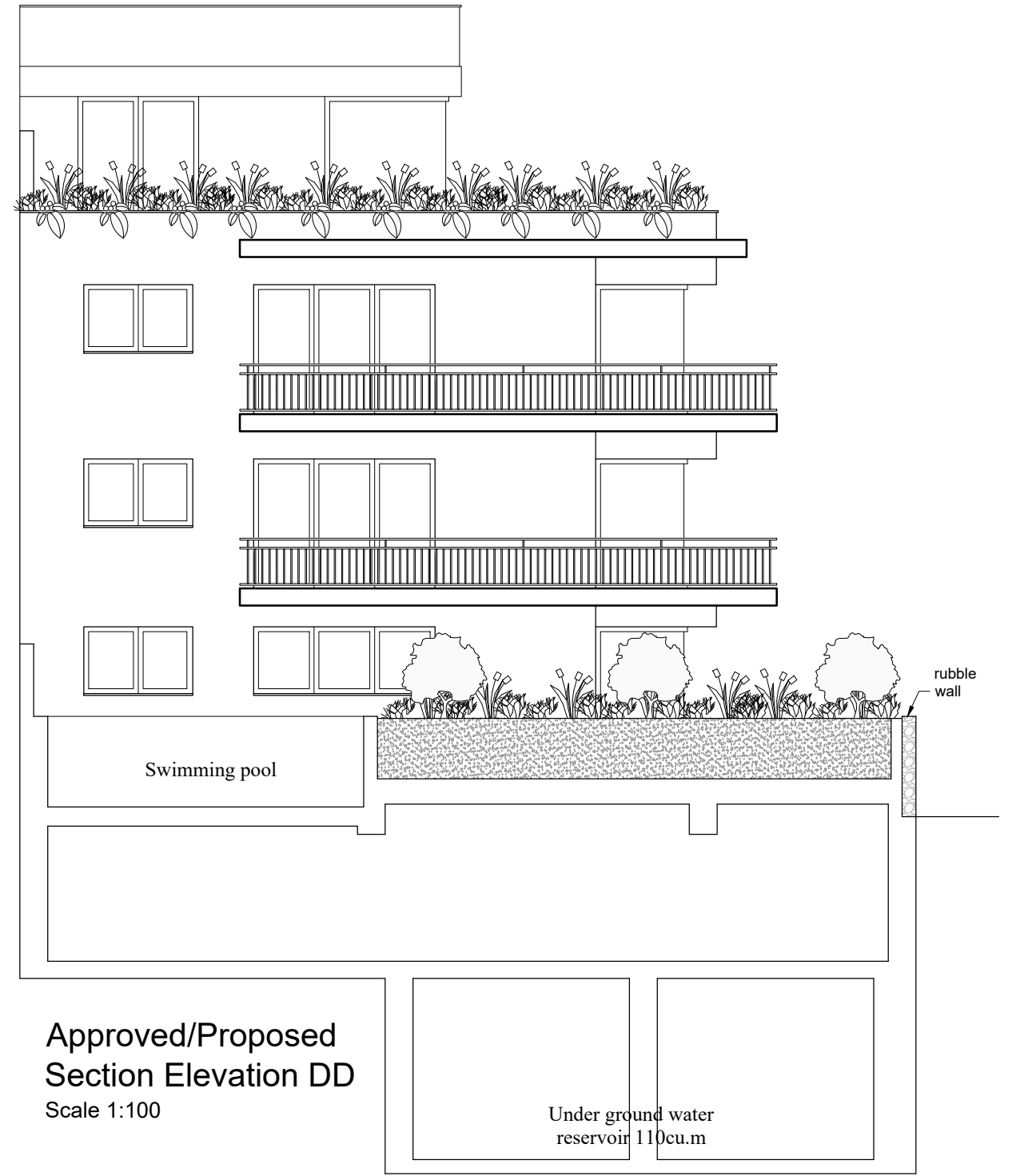
Setback floor level  
Scale 1:100



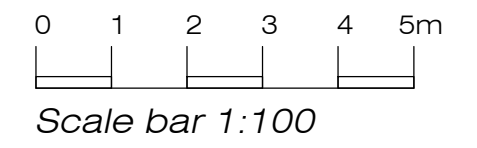
- All Facade Materials:
- All apertures in white PVC
  - Unrendered local franka stone
  - Beige rendering for balconies and concrete lintols



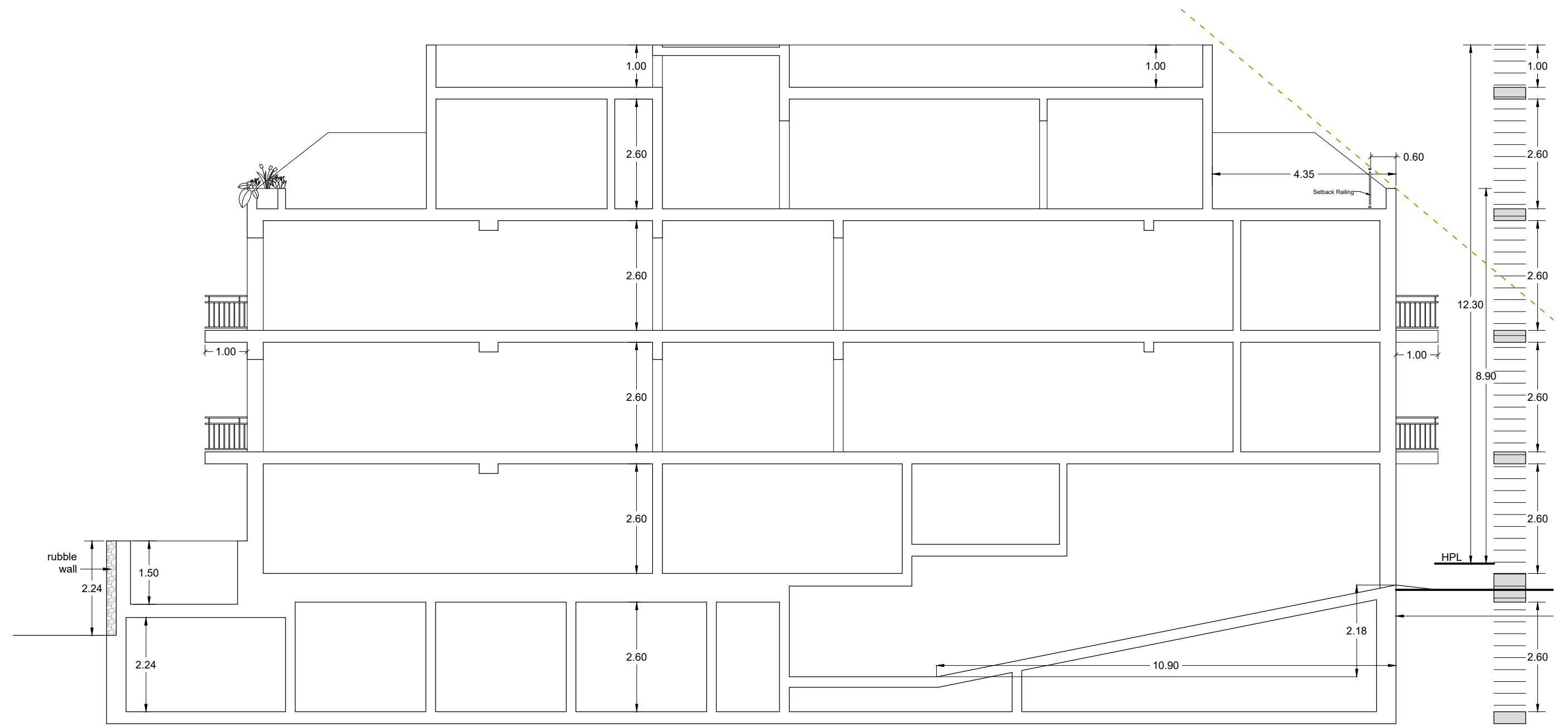
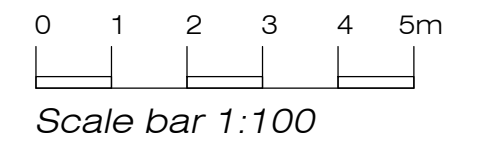
**Elevation BB**  
Scale 1:100



**Approved/Proposed  
Section Elevation DD**  
Scale 1:100



Approved Section Elevation CC  
Scale 1:100  
(No changes)



Approved/Proposed Section AA  
Scale 1:100