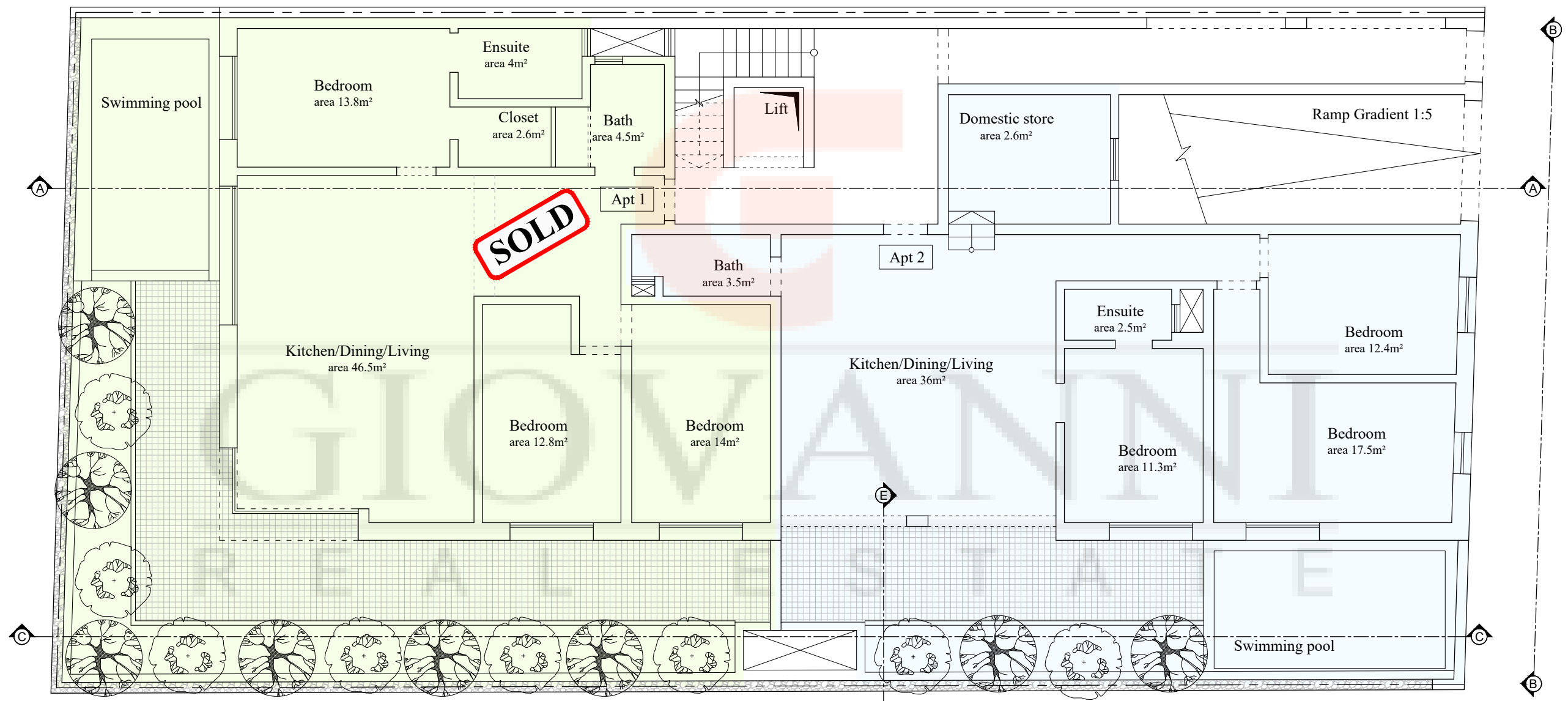
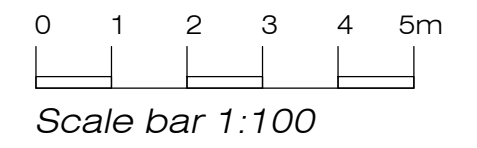


Approved Basement level
Scale 1:100 (No changes)

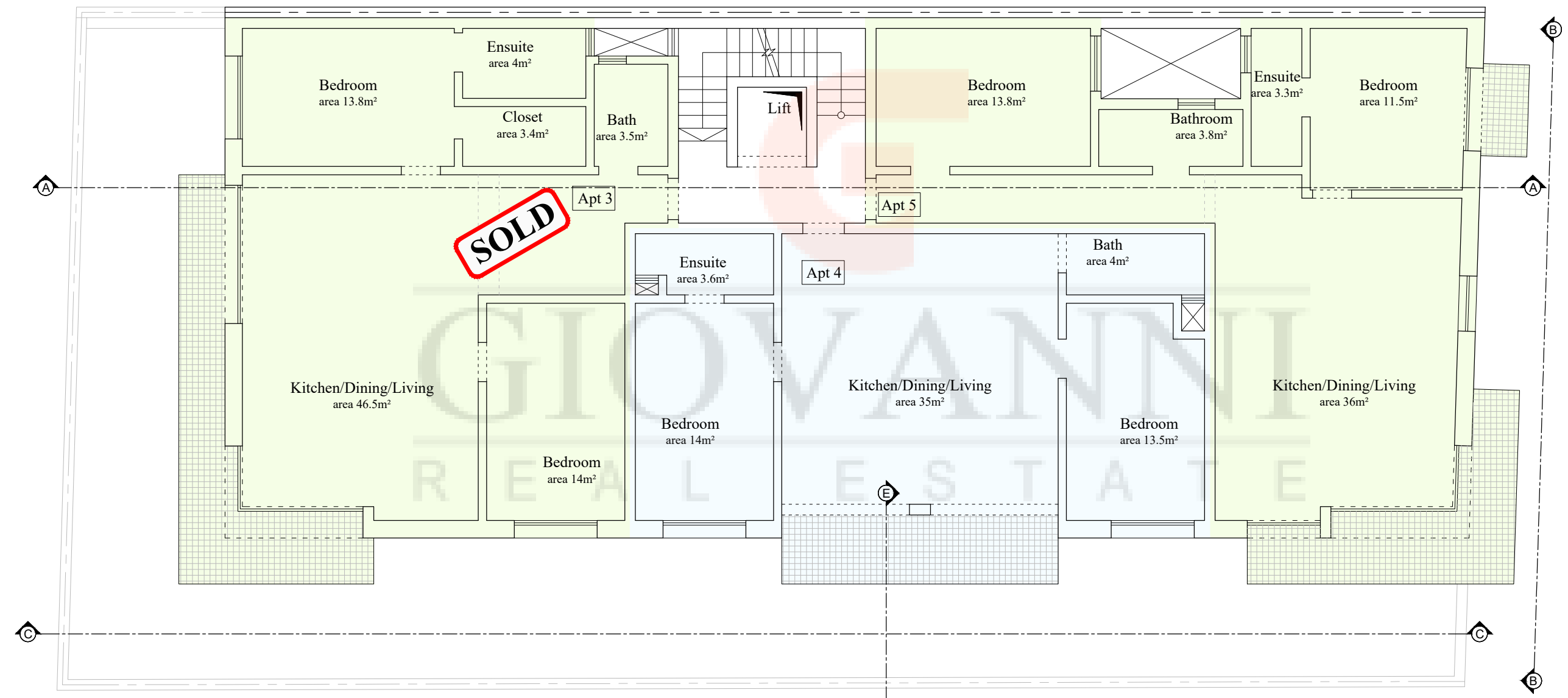


Apt 1 - Gross floor area 202m²
 Internal area 117m²
 Apt 2 - Gross floor area 164m²
 Internal area 117m²

Ground floor level
 Scale 1:100

0 1 2 3 4 5m

Scale bar 1:100

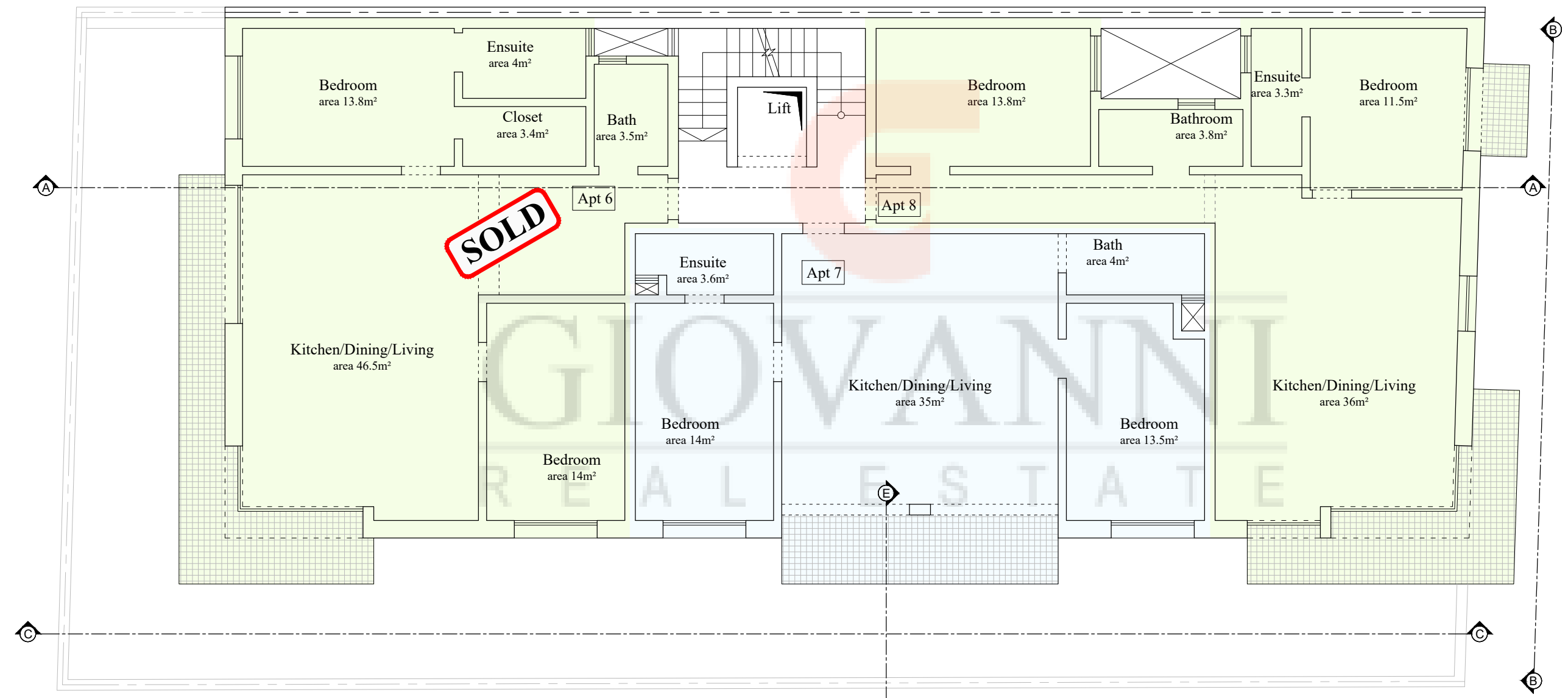


- Apt 3 - Gross floor area 114m²
Internal area 100m²
- Apt 4 - Gross floor area 90m²
Internal area 81m²
- Apt 5 - Gross floor area 105m²
Internal area 91m²

First floor level
Scale 1:100

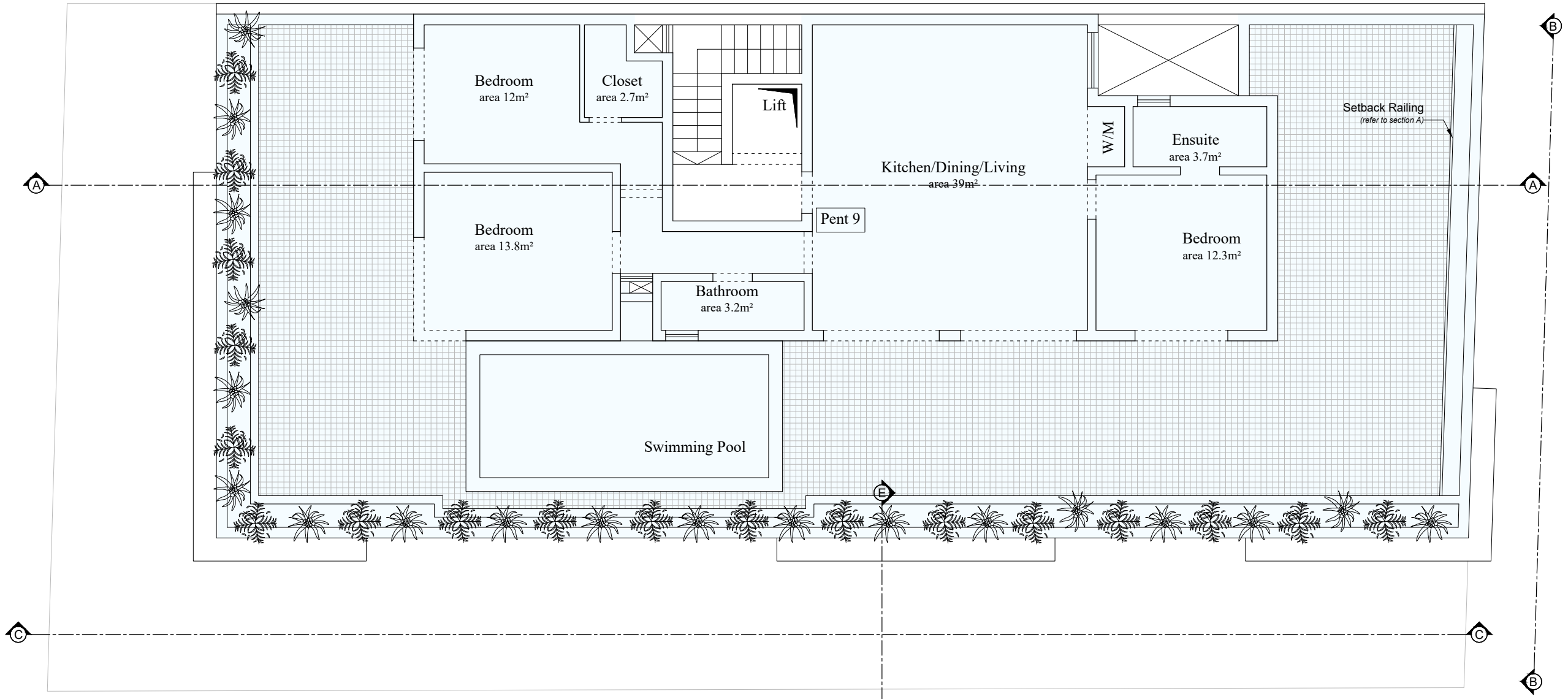
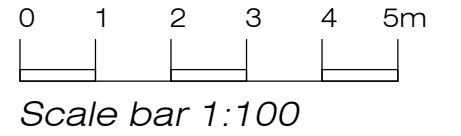
0 1 2 3 4 5m

Scale bar 1:100



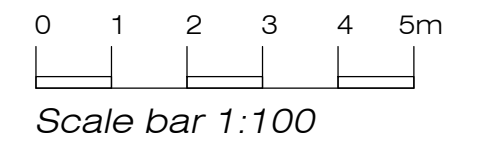
- Apt 6 - Gross floor area 114m²
Internal area 100m²
- Apt 7 - Gross floor area 90m²
Internal area 81m²
- Apt 8 - Gross floor area 105m²
Internal area 91m²

Second floor level
Scale 1:100



Penthouse 9 - Gross floor area 288m²
Internal area 110m²

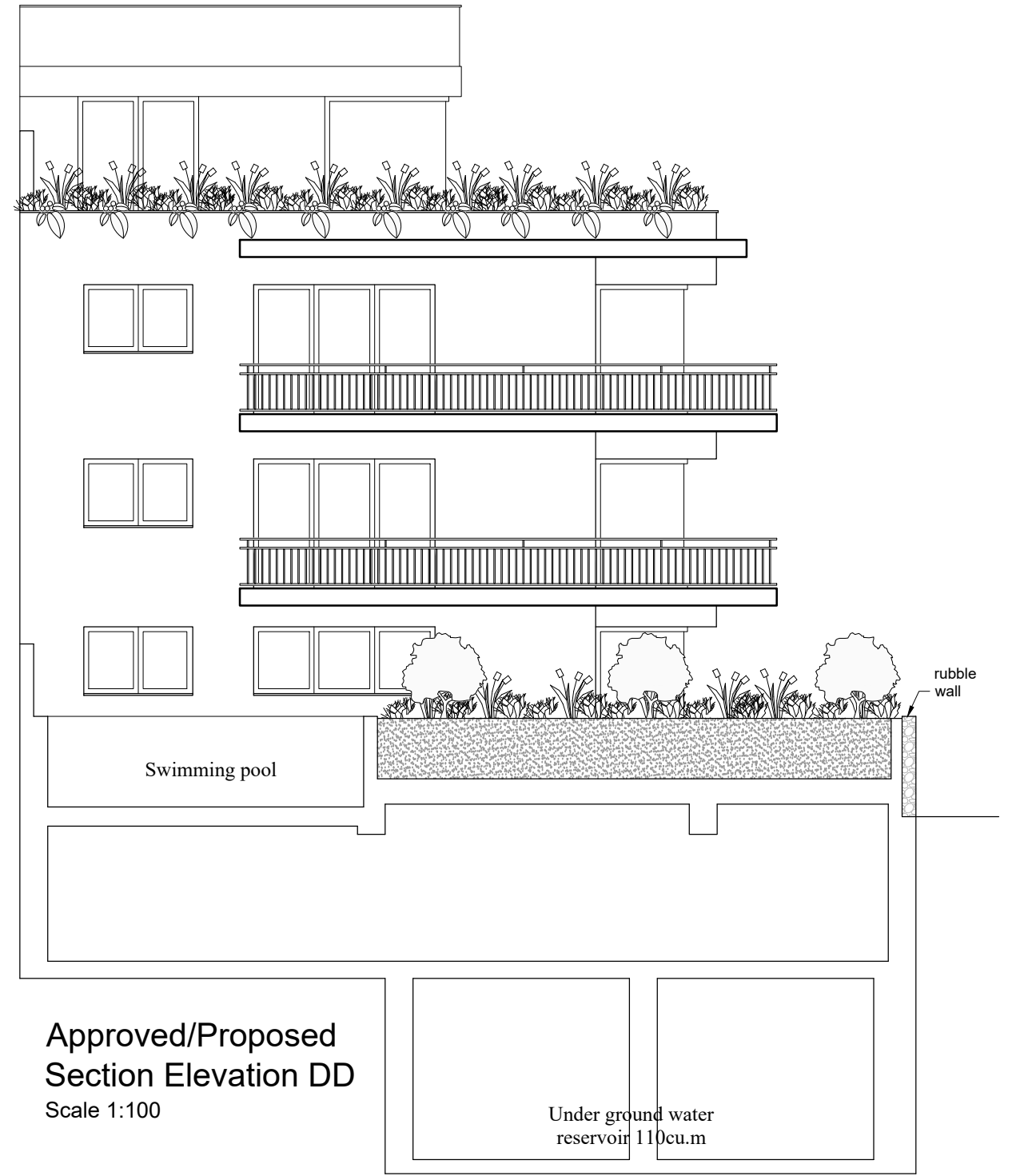
Setback floor level
Scale 1:100



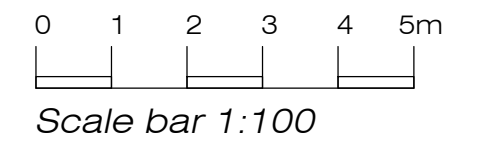
- All Facade Materials:
- All apertures in white PVC
 - Unrendered local franka stone
 - Beige rendering for balconies and concrete lintols



Elevation BB
Scale 1:100



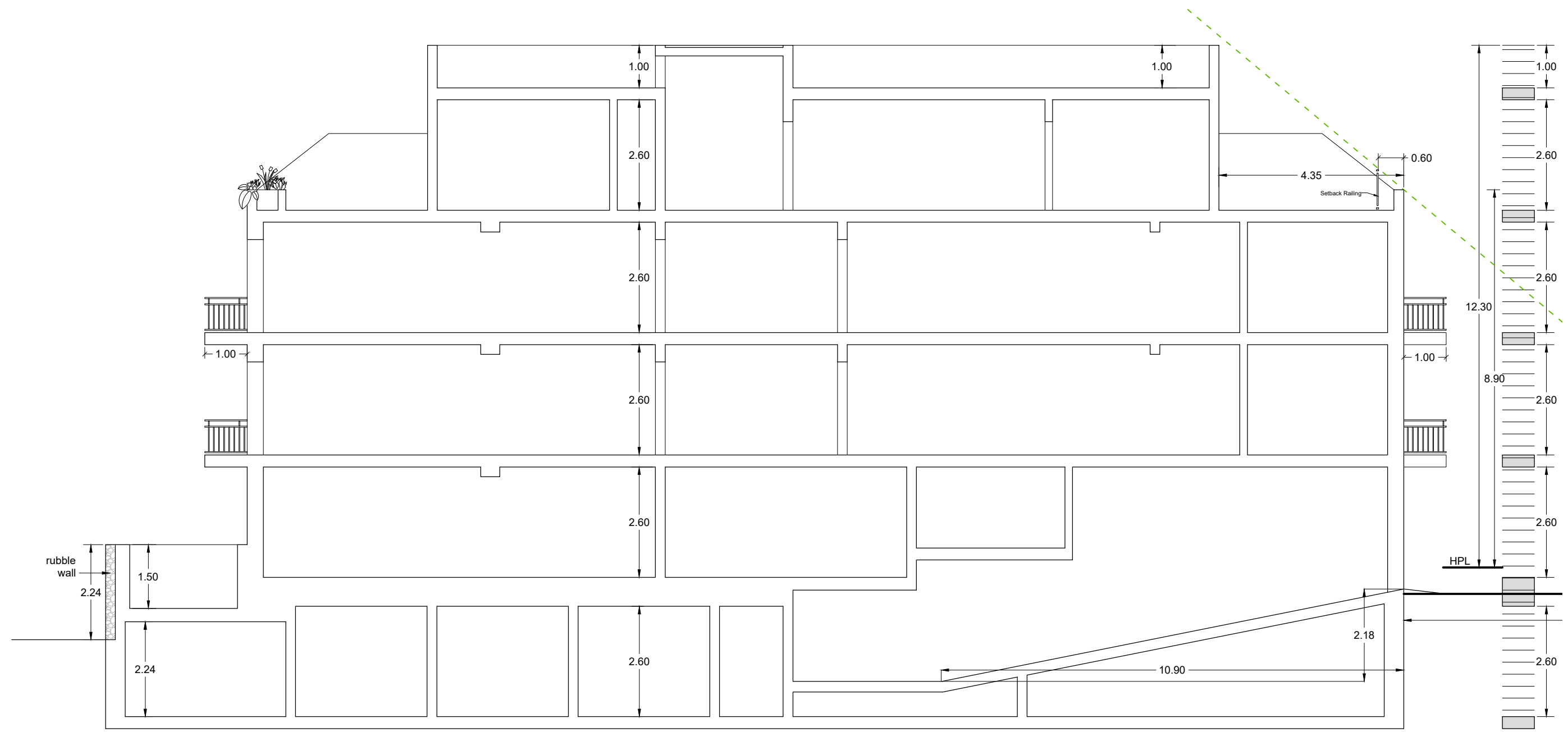
**Approved/Proposed
Section Elevation DD**
Scale 1:100



Approved Section Elevation CC
Scale 1:100
(No changes)

0 1 2 3 4 5m

Scale bar 1:100



Approved/Proposed Section AA
Scale 1:100

Sannat, Gozo

Garages

Garage 1	– SOLD
Garage 2	– SOLD
Garage 3	– €25,000
Garage 4	– €25,000
Parking Space 5	– €20,000
Garage 6	– SOLD
Garage 7	– €32,000
Garage 8	– €32,000
Garage 9	– €32,000

Maisonettes @ Gound Floor

Apartment 1 – **SOLD**

Apartment 2 – 3 bed 3 bath with Pool - €245,000+ €5,000 Common parts

Flats @ First Floor

Apartment 3 – **SOLD**

Apartment 4 – 2 bed 2 bath - €215,000+ €5,000 Common parts

Apartment 5 – 2 bed bath - €200,000+ €5,000 Common parts

Flats @ Second Floor

Apartment 6 – **SOLD**

Apartment 7 – 2 bed 2 bath - €225,000+ €5,000 Common parts

Apartment 8 – 2 bed bath - €210,000+ €5,000 Common parts – **ON HOLD**

Penthouses @ Recessed floor level

Penthouse 9– 3 bed 2 bath with Pool - €415,000+ €5,000 Common parts



