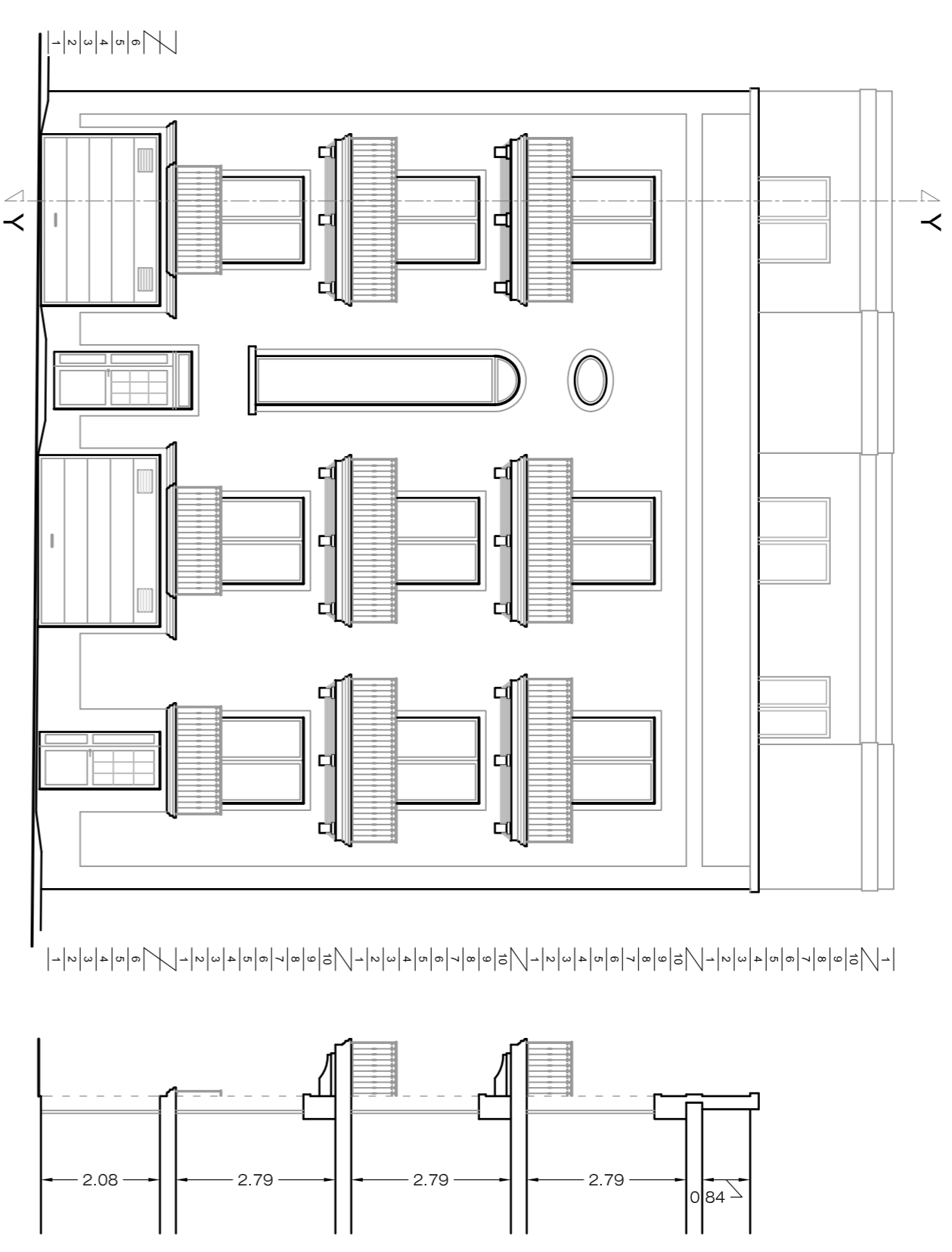


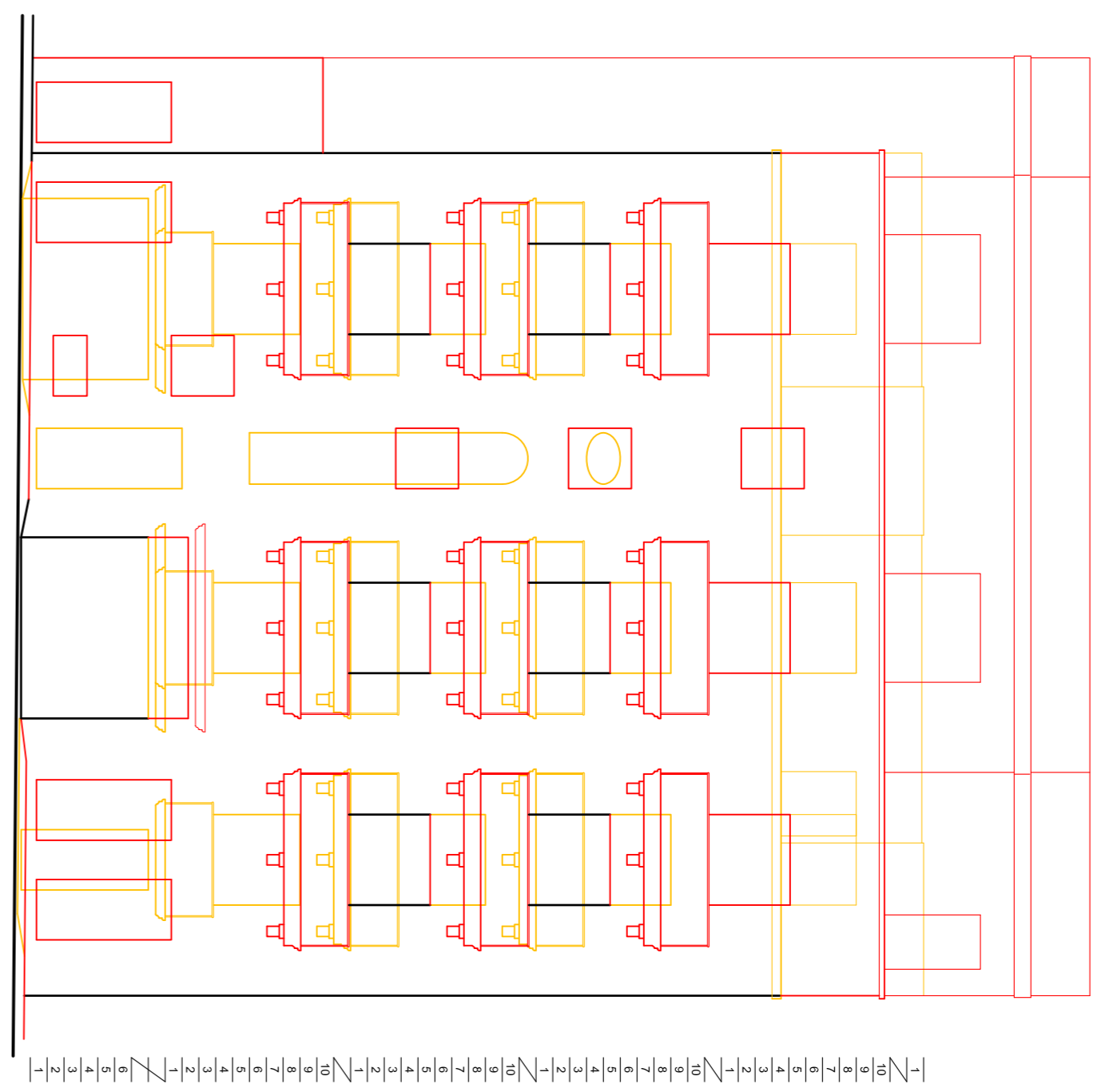
NOTE:
LOCAL STONE UNPAINTED & UNRENDERED
APERTURES BROWN COLOUR ALUMINIUM
BALCONY RAILINGS SMOOTH IRON PAINTED BLACK



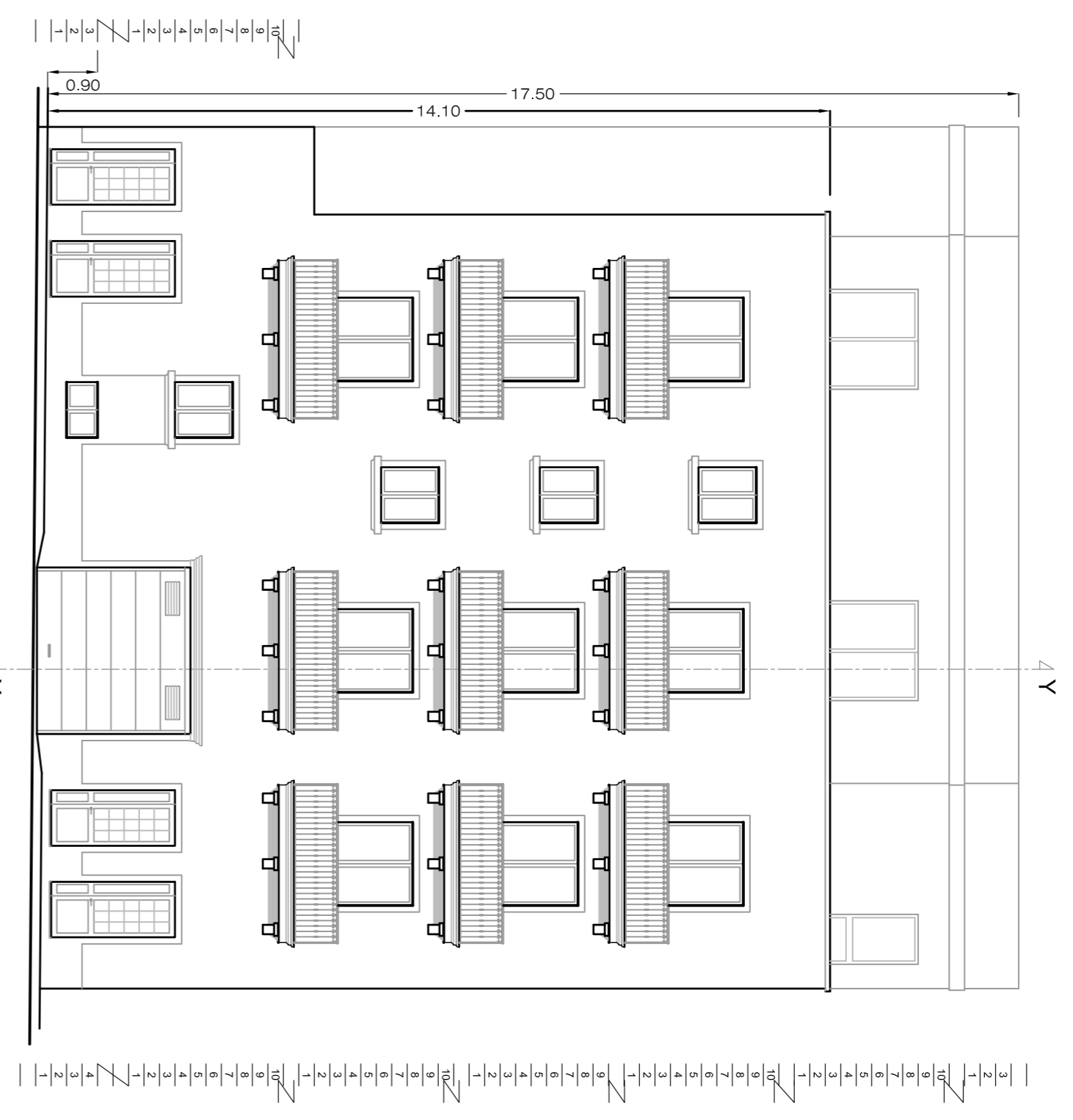
Front Elevation as Approved in
Scale 1:100

Vertical Section Y : Y
Scale 1:100

NOTE:-
ERECT PROPOSED
DEMOLISH PROPOSED

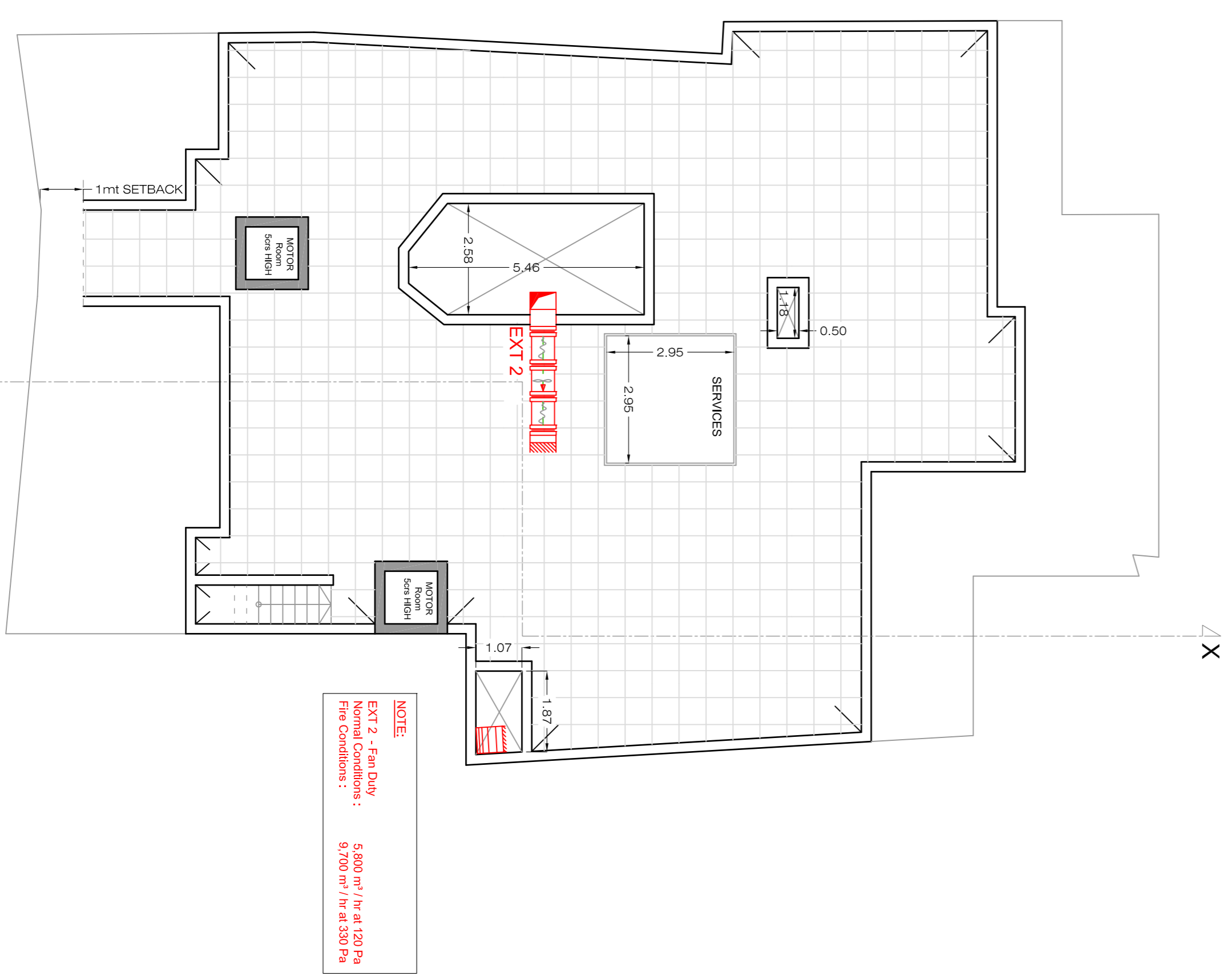


Front Elevation as Approved in PA 3091/13
Scale 1:100



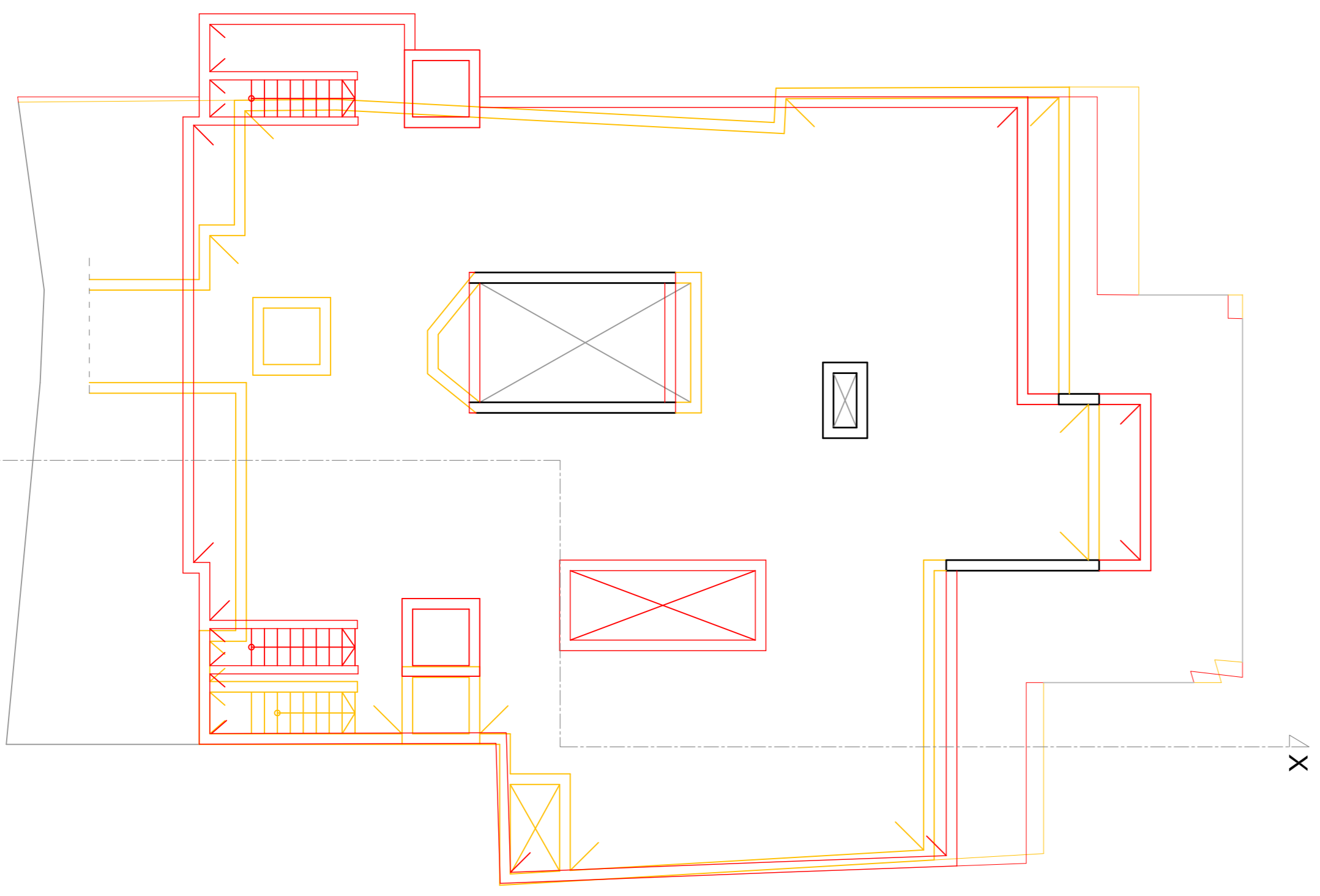
FRONT ELEVATION as PROPOSED
Scale 1:100

Vertical Section Y : Y
Scale 1:100

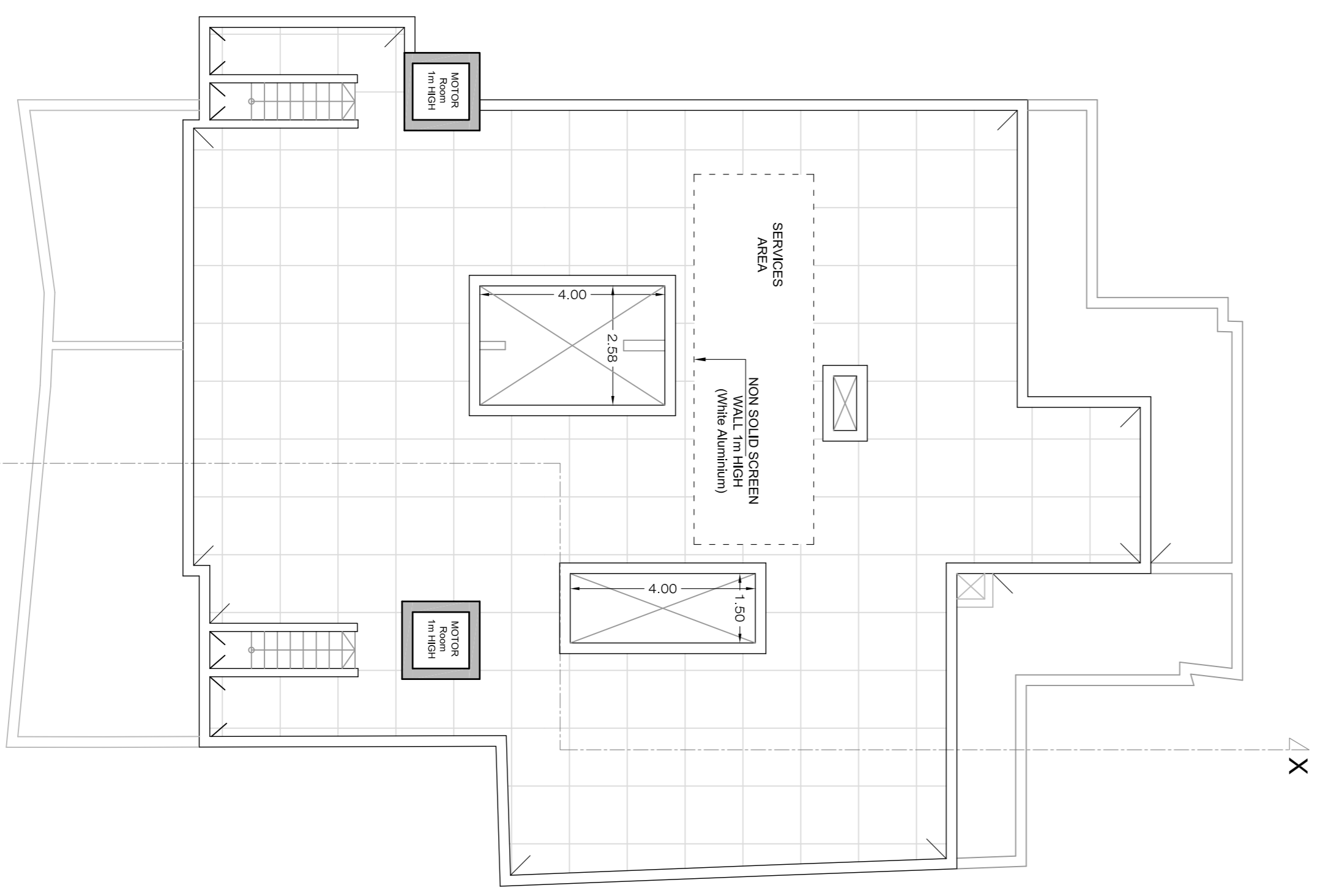


ROOF PLAN as Approved in
Scale 1:100

NOTE:
EXT 2 - Fan Drip
Normal Conditions : 5800 m² / hr at 120 Pa
Fire Conditions : 9,700 m² / hr at 320 Pa



RECEDED FLOOR showing Additions & Alterations
Scale 1:100

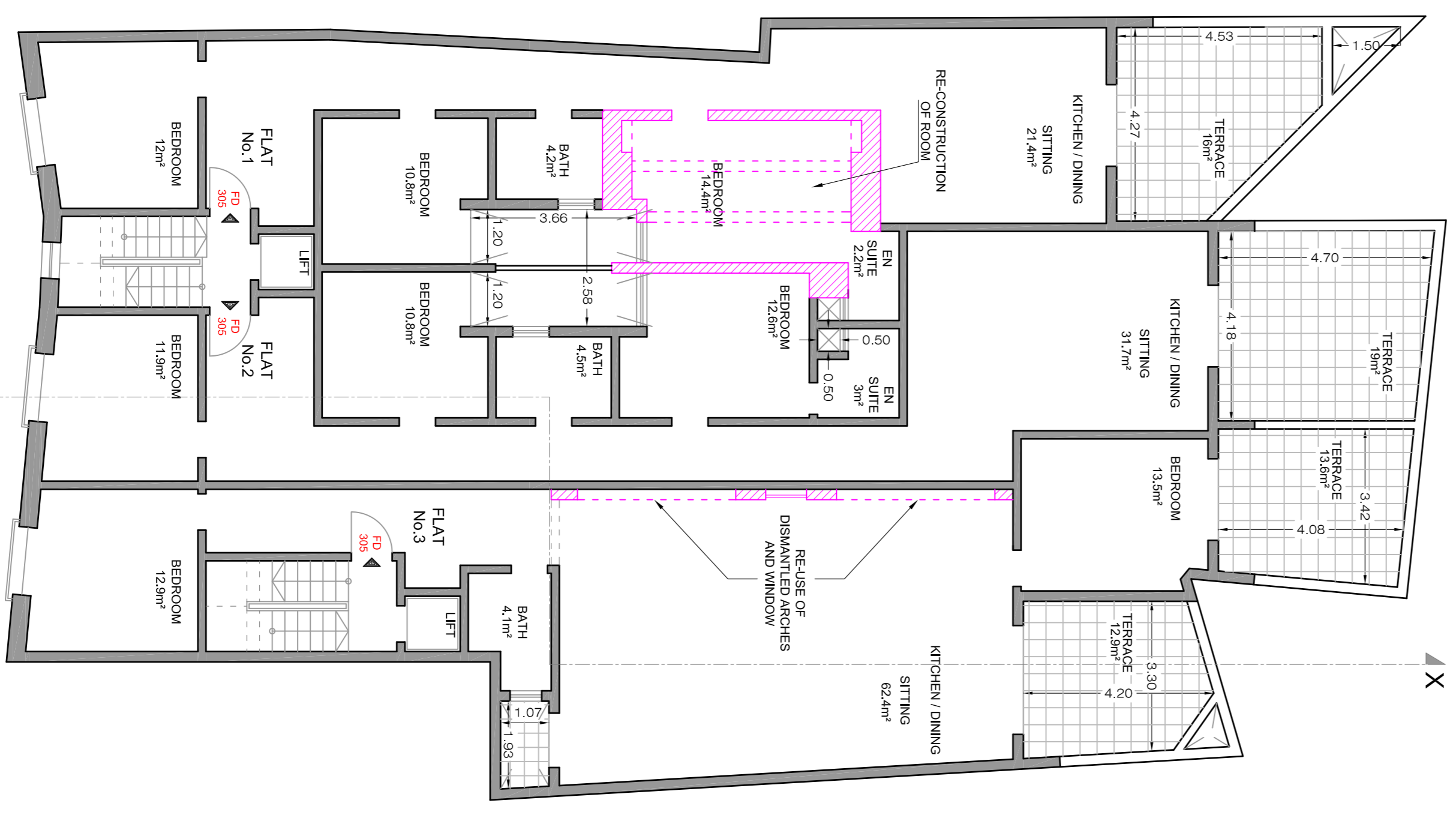


RECEDED FLOOR as PROPOSED
Scale 1:100

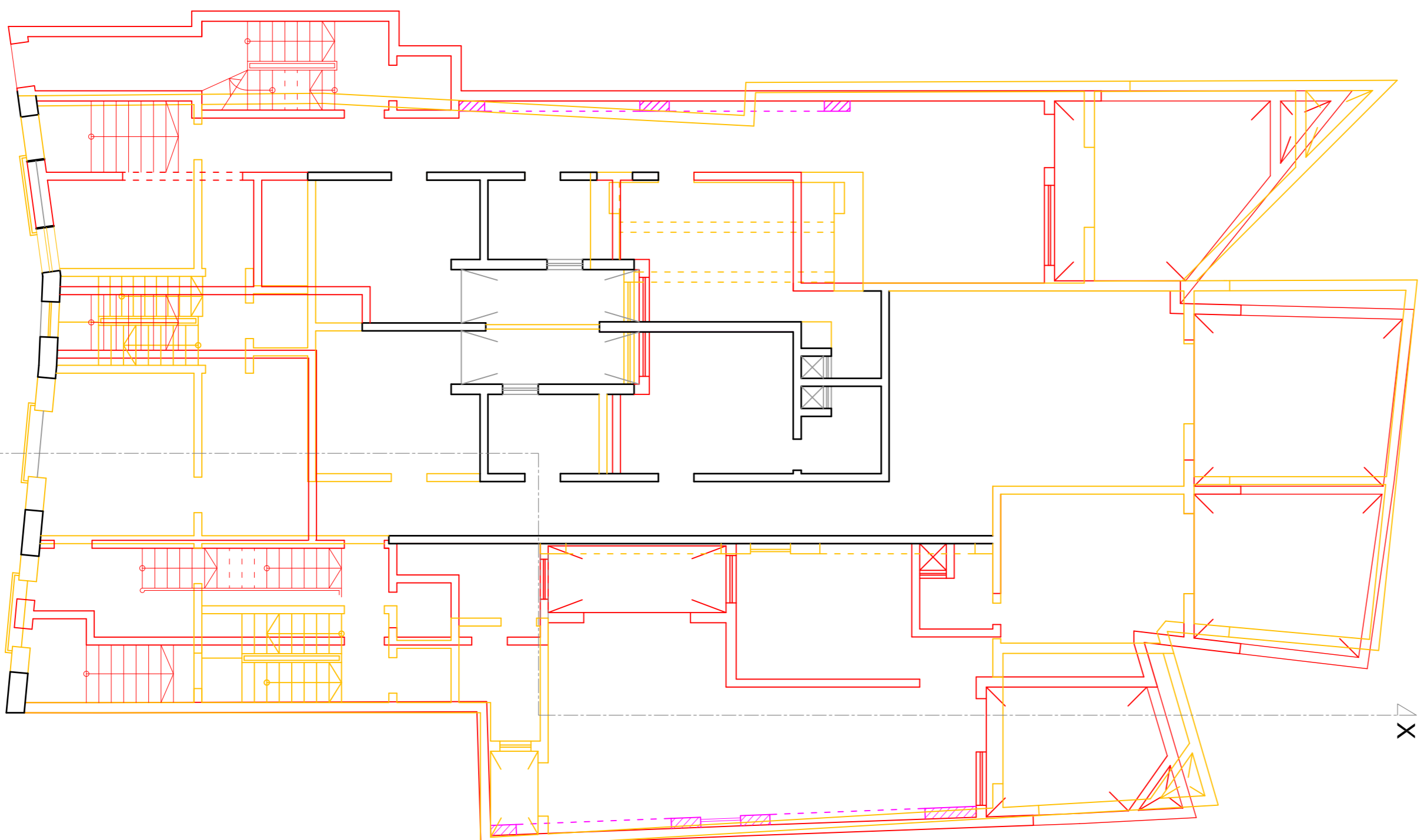
SITE AREA:- 457.5m²

FLOOR LEVEL	INTERNAL AREA	EXTERNAL AREA	10% of 2 Bedroom	10% of 3 Bedroom	GROSS FLOOR AREA
BASEMENT					455.0m ²
Semi-BASMENT					
GROUND					
Flat No.1	114.3m ²	22.1m ²		11.5m ²	455.0m ²
Flat No.2	115.6m ²	21.8m ²		11.5m ²	125.8m ²
Flat No.3	117.0m ²	16.6m ²		11.5m ²	127.1m ²
FIRST					
Flat No.4	114.3m ²	7.0m ²			133.6m ²
Flat No.5	113.8m ²	6.8m ²			121.3m ²
Flat No.6	117.0m ²	9.1m ²			122.4m ²
SECOND					
Flat No.7	114.3m ²	7.0m ²			126.1m ²
Flat No.8	115.6m ²	6.8m ²			121.3m ²
Flat No.9	117.0m ²	9.1m ²			122.4m ²
THIRD					
Flat No.10	114.3m ²	7.0m ²			126.1m ²
Flat No.11	115.6m ²	6.5m ²			121.3m ²
Flat No.12	117.0m ²	9.1m ²			122.4m ²
Flat No.13	114.7m ²	35.0m ²			126.2m ²
Receded Flat No.14	137.7m ²	45.0m ²			149.2m ²

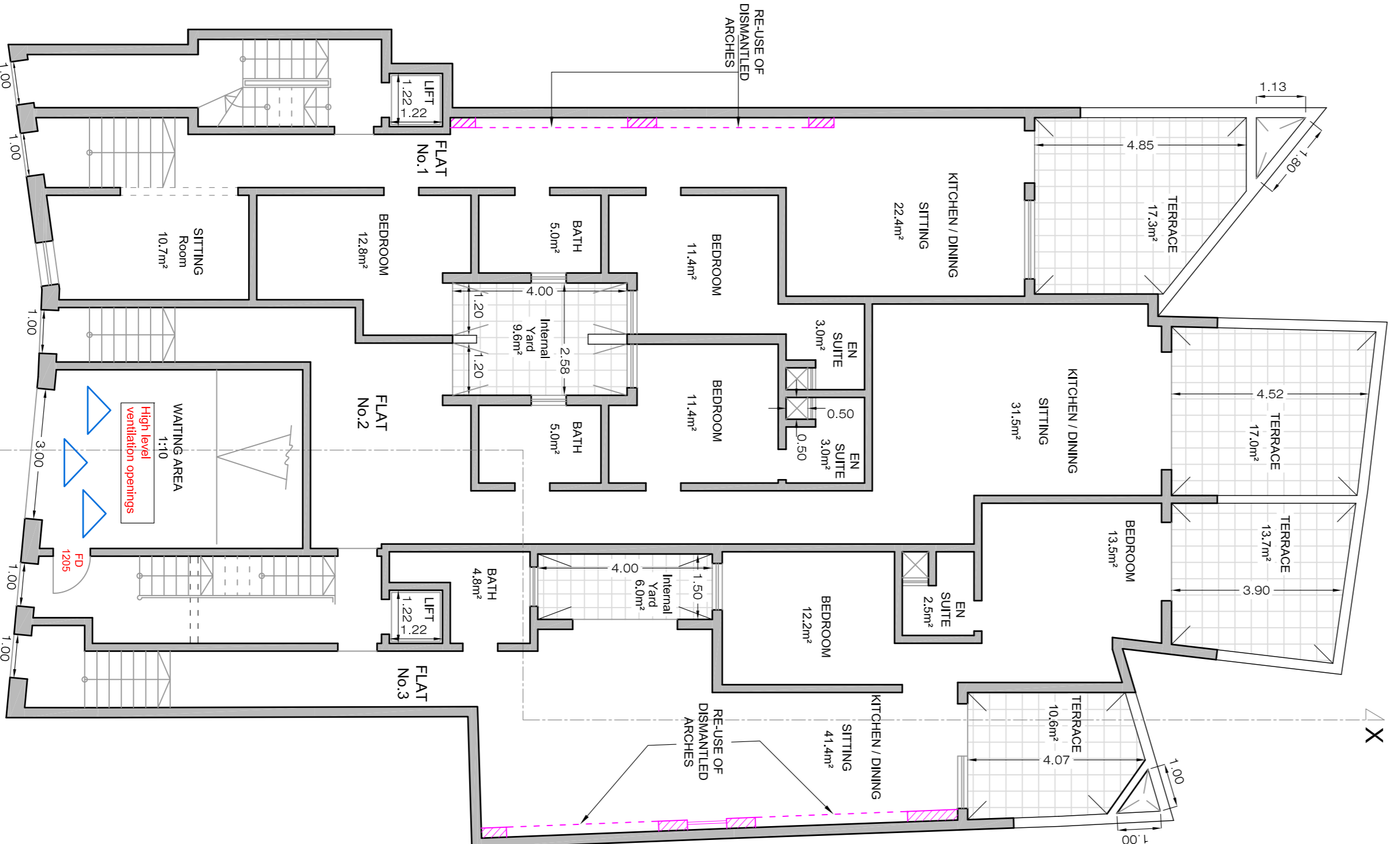
NOTE:-
 ERECT PROPOSED
 DEMOLISH PROPOSED



GROUND FLOOR as Approved in 2017
 Scale 1:100





GROUND FLOOR showing Additions & Alterations
 Scale 1:100

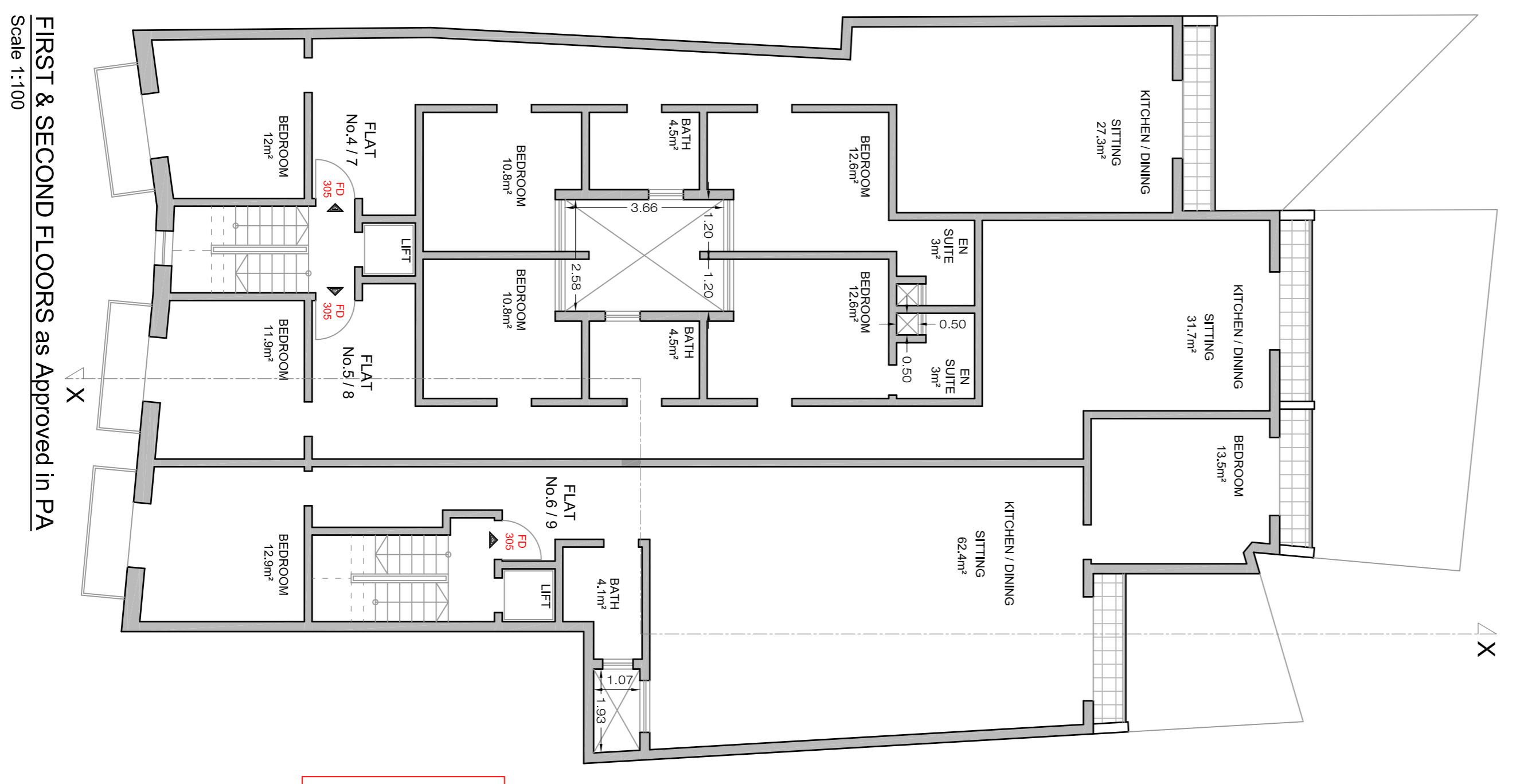
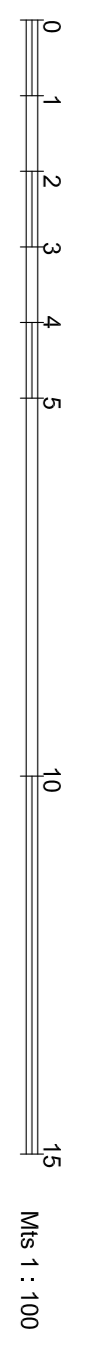


GROUND FLOOR as PROPOSED
 Scale 1:100

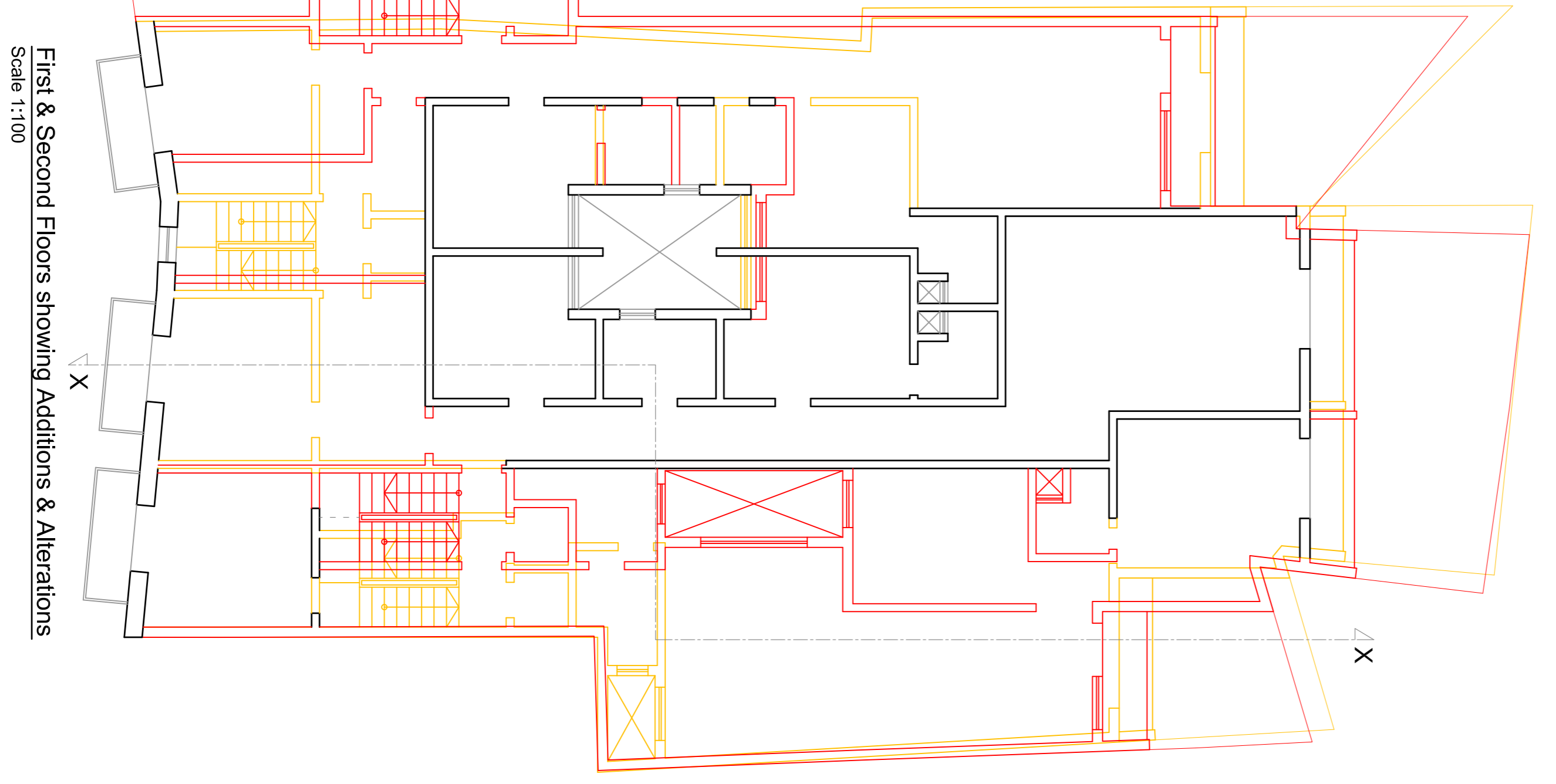
SITE AREA:- 457.5m²

FLOOR LEVEL	INTERNAL AREA	EXTERNAL AREA	10% of 2 Bedroom	10% of 3 Bedroom	GROSS FLOOR AREA
BASEMENT					455.0m ²
Semi-BASEMENT					
GROUND					
Flat No.1	114.3m ²	22.1m ²		11.5m ²	455.0m ²
Flat No.2	115.6m ²	21.8m ²		11.5m ²	125.8m ²
Flat No.3	117.0m ²	16.6m ²		11.5m ²	127.1m ²
Flat No.4	114.3m ²	7.0m ²			133.6m ²
Flat No.5	113.8m ²	6.8m ²			121.3m ²
Flat No.6	117.0m ²	9.1m ²			122.4m ²
Flat No.7	114.3m ²	7.0m ²			126.1m ²
Flat No.8	115.6m ²	6.8m ²			121.3m ²
Flat No.9	117.0m ²	9.1m ²			122.4m ²
Flat No.10	114.3m ²	7.0m ²			126.1m ²
Flat No.11	115.6m ²	6.5m ²			121.3m ²
Flat No.12	117.0m ²	9.1m ²			122.4m ²
Flat No.13	114.7m ²	35.0m ²			126.4m ²
Receded Flat No.14	137.7m ²	45.0m ²			126.2m ²
					149.2m ²

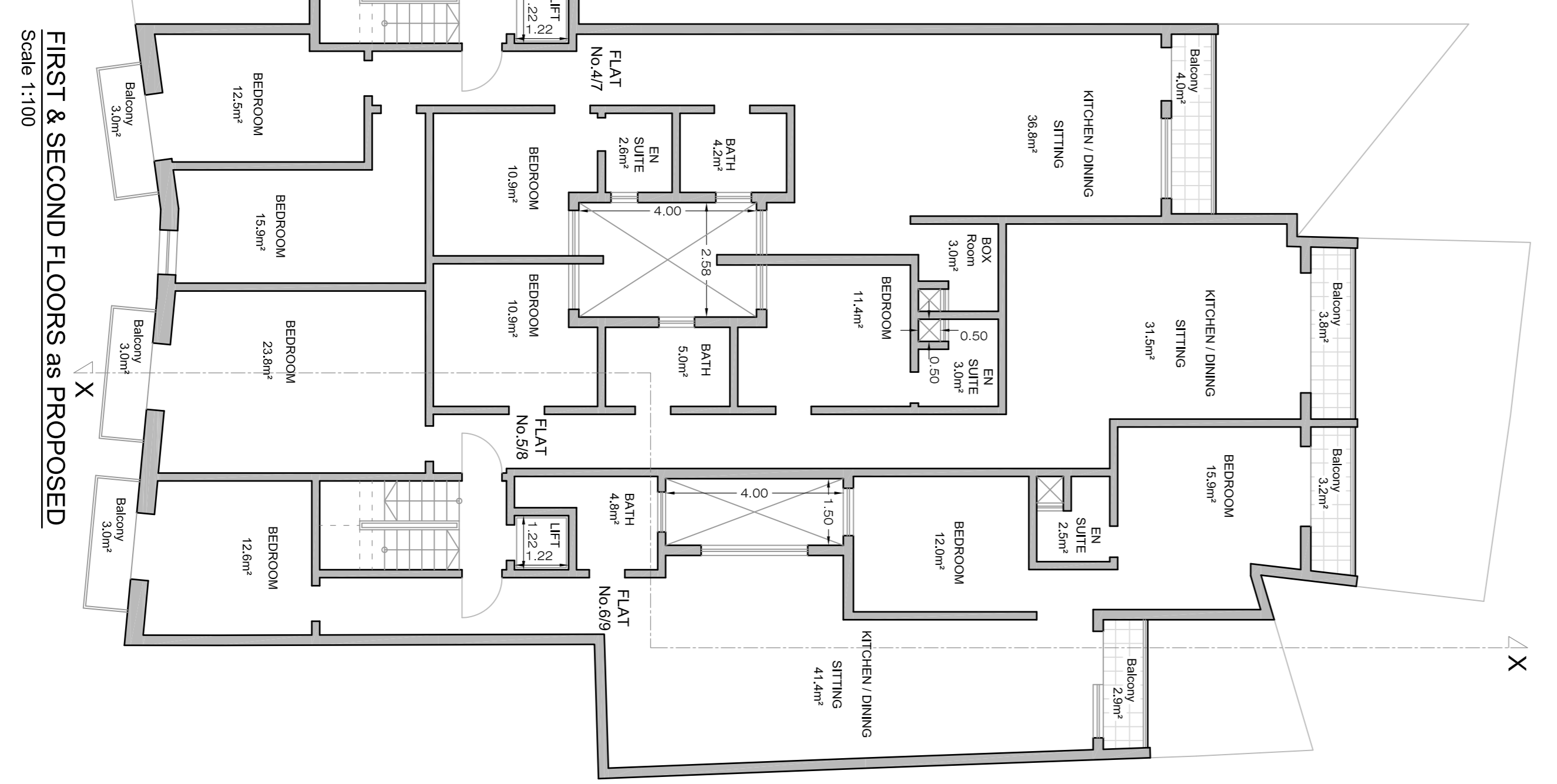
NOTE:-
 ERECT PROPOSED
 DEMOLISH PROPOSED



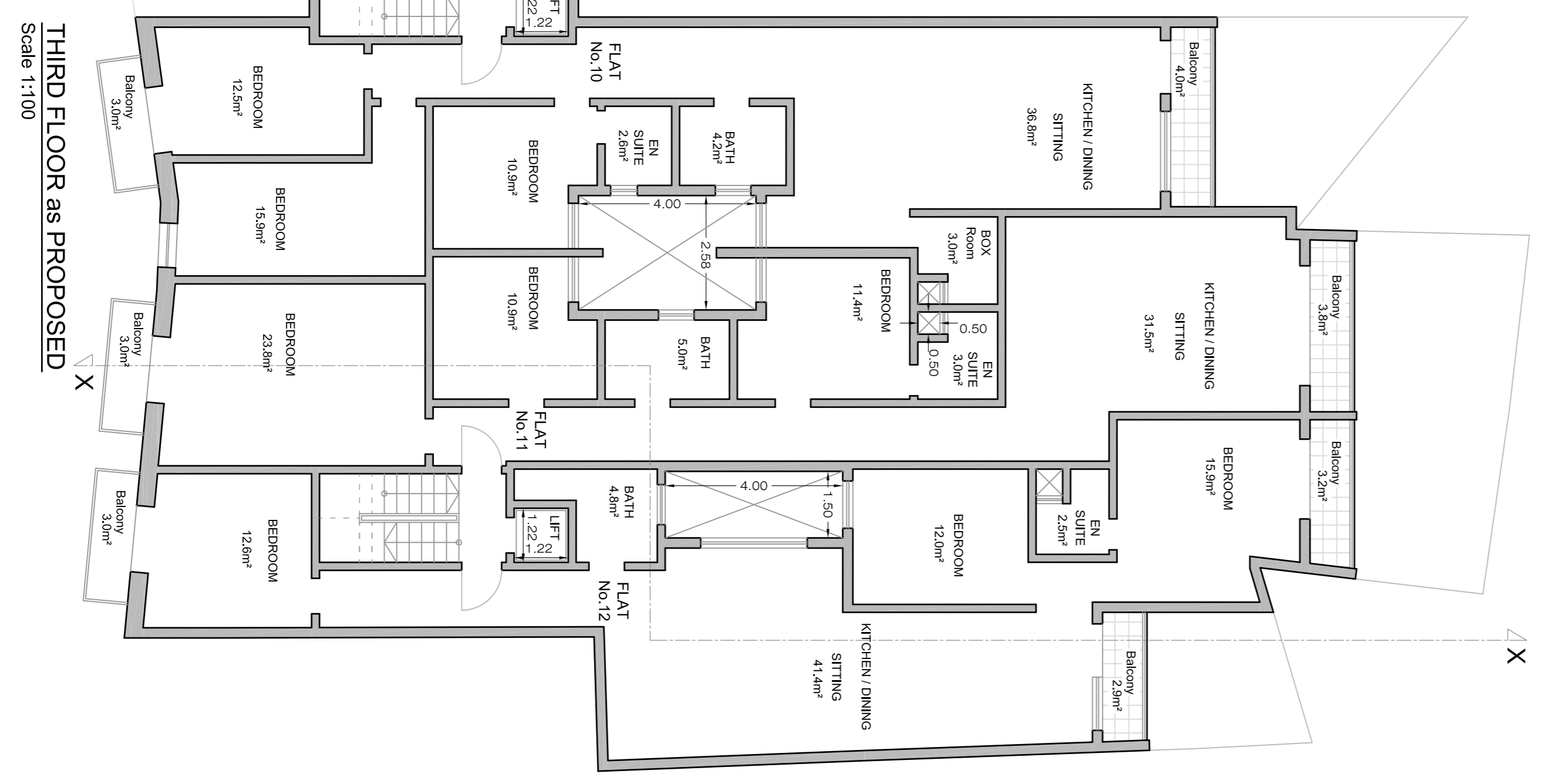
FIRST & SECOND FLOORS as Approved in PA
Scale 1:100



First & Second Floors showing Additions & Alterations
Scale 1:100



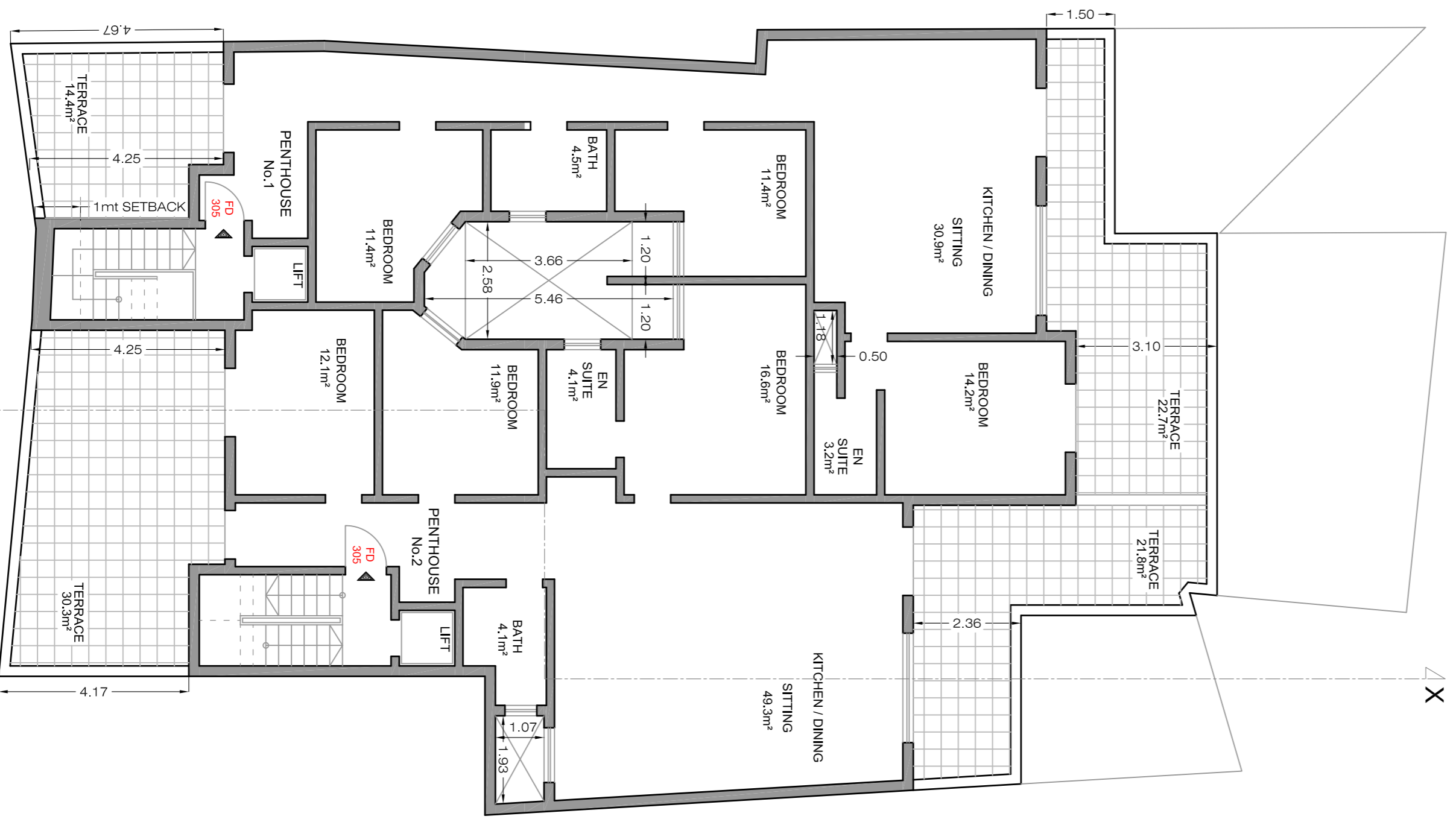
FIRST & SECOND FLOORS as PROPOSED
Scale 1:100



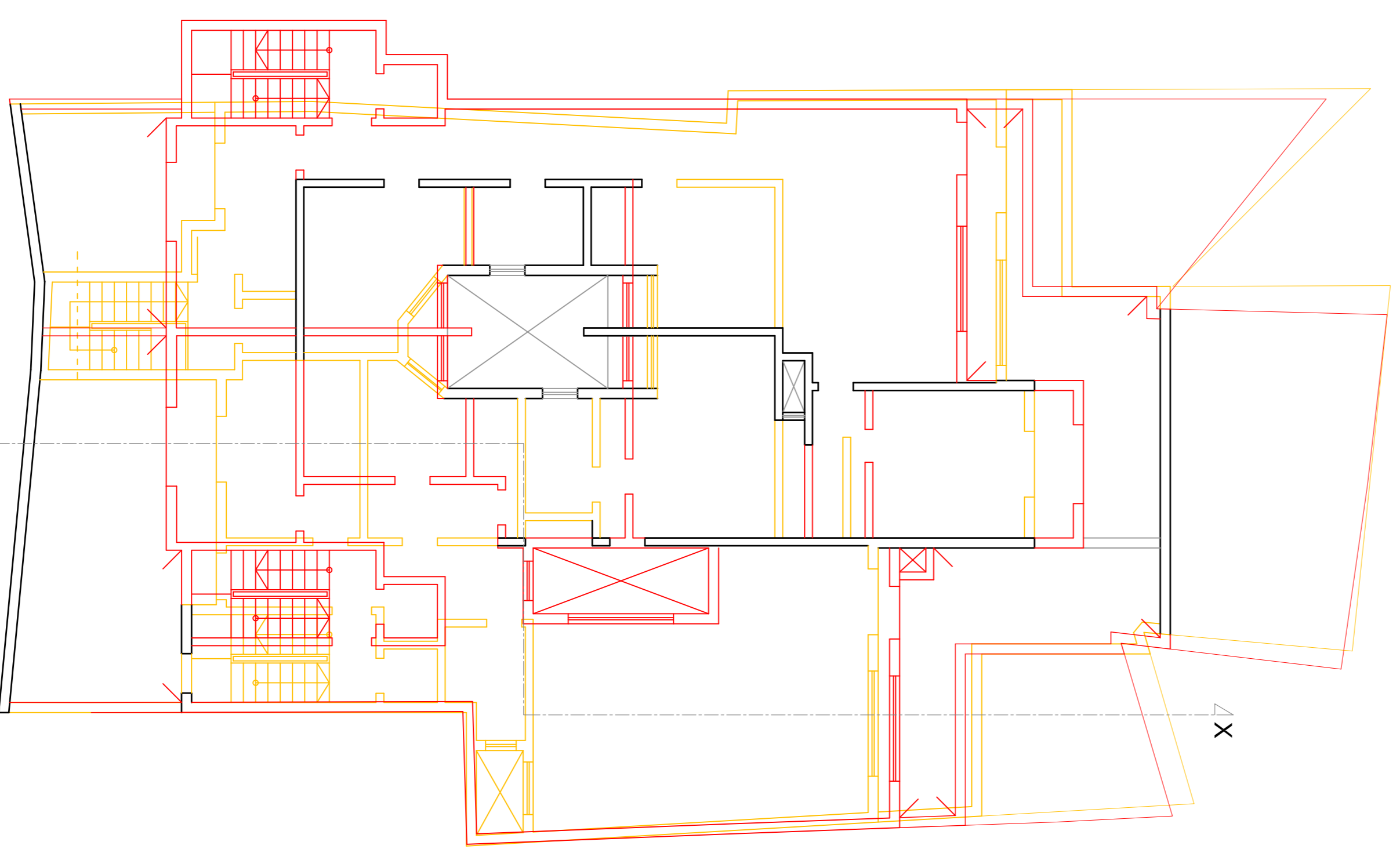
THIRD FLOOR as PROPOSED
Scale 1:100

SITE AREA:- 457.5m²

FLOOR LEVEL	INTERNAL AREA	EXTERNAL AREA	10% of 2 Bedroom	10% of 3 Bedroom	GROSS FLOOR AREA
BASEMENT					455.0m ²
Semi-BASEMENT					
GROUND					
Flat No.1	114.3m ²	22.1m ²		11.5m ²	455.0m ²
Flat No.2	115.6m ²	21.8m ²		11.5m ²	125.8m ²
Flat No.3	117.0m ²	16.6m ²		11.5m ²	127.1m ²
FIRST					
Flat No.4	114.3m ²	7.0m ²			133.6m ²
Flat No.5	113.8m ²	6.8m ²			121.3m ²
Flat No.6	117.0m ²	9.1m ²			122.4m ²
SECOND					
Flat No.7	114.3m ²	7.0m ²			126.1m ²
Flat No.8	115.6m ²	6.8m ²			121.3m ²
Flat No.9	117.0m ²	9.1m ²			122.4m ²
THIRD					
Flat No.10	114.3m ²	7.0m ²			126.1m ²
Flat No.11	115.6m ²	6.5m ²			121.3m ²
Flat No.12	117.0m ²	9.1m ²			122.4m ²
Flat No.13	114.7m ²	35.0m ²		11.5m ²	126.2m ²
Receded Flat No.14	137.7m ²	45.0m ²		11.5m ²	149.2m ²

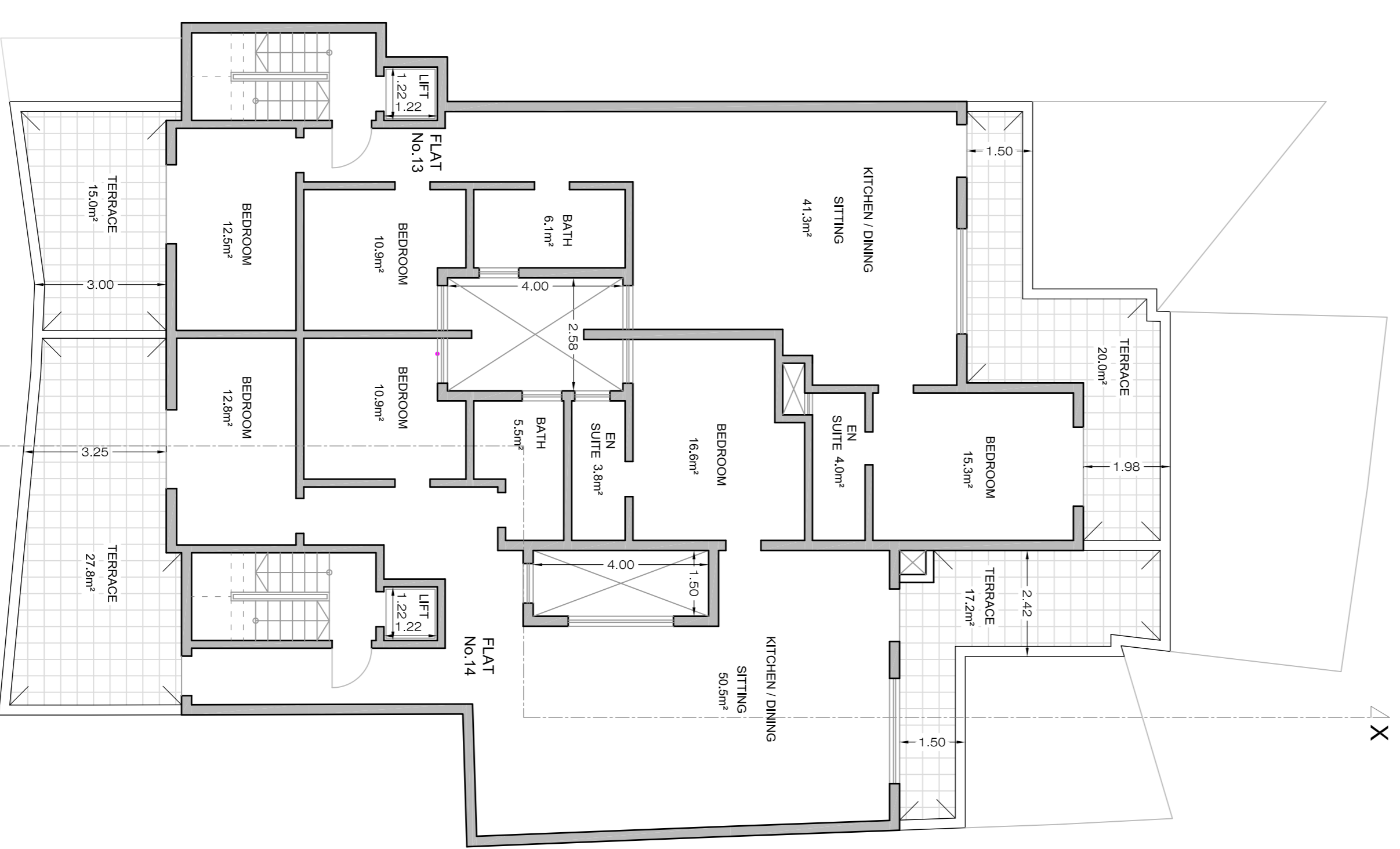


PENTHOUSE as Approved in PA 3091/13
Scale 1:100



NOTE:-
■ ERECT PROPOSED
■ DEMOLISH PROPOSED


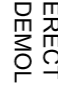
Penthouse (Receded Floor) showing Additions & Alterations
Scale 1:100

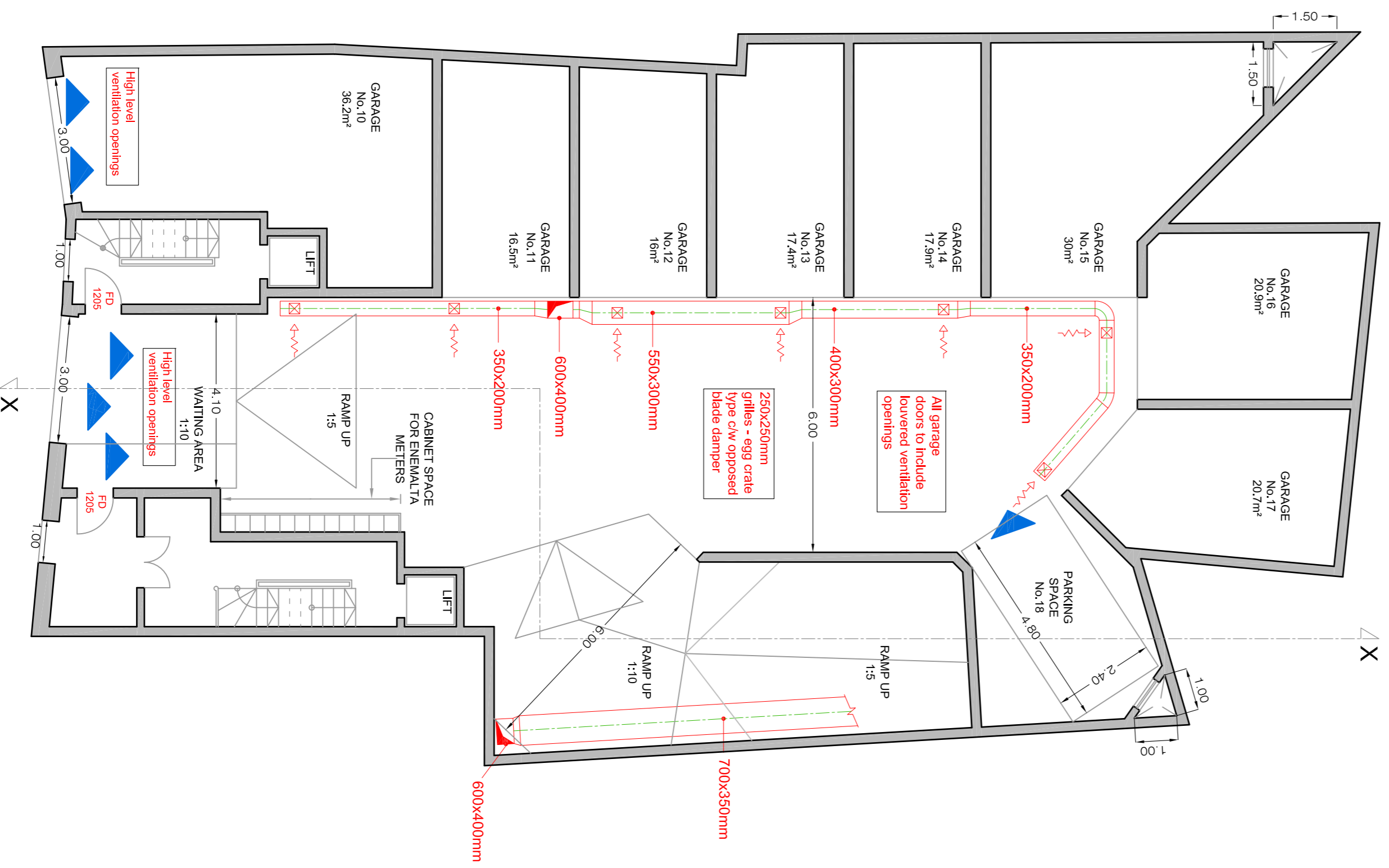


RECEDED FLOOR as PROPOSED
Scale 1:100

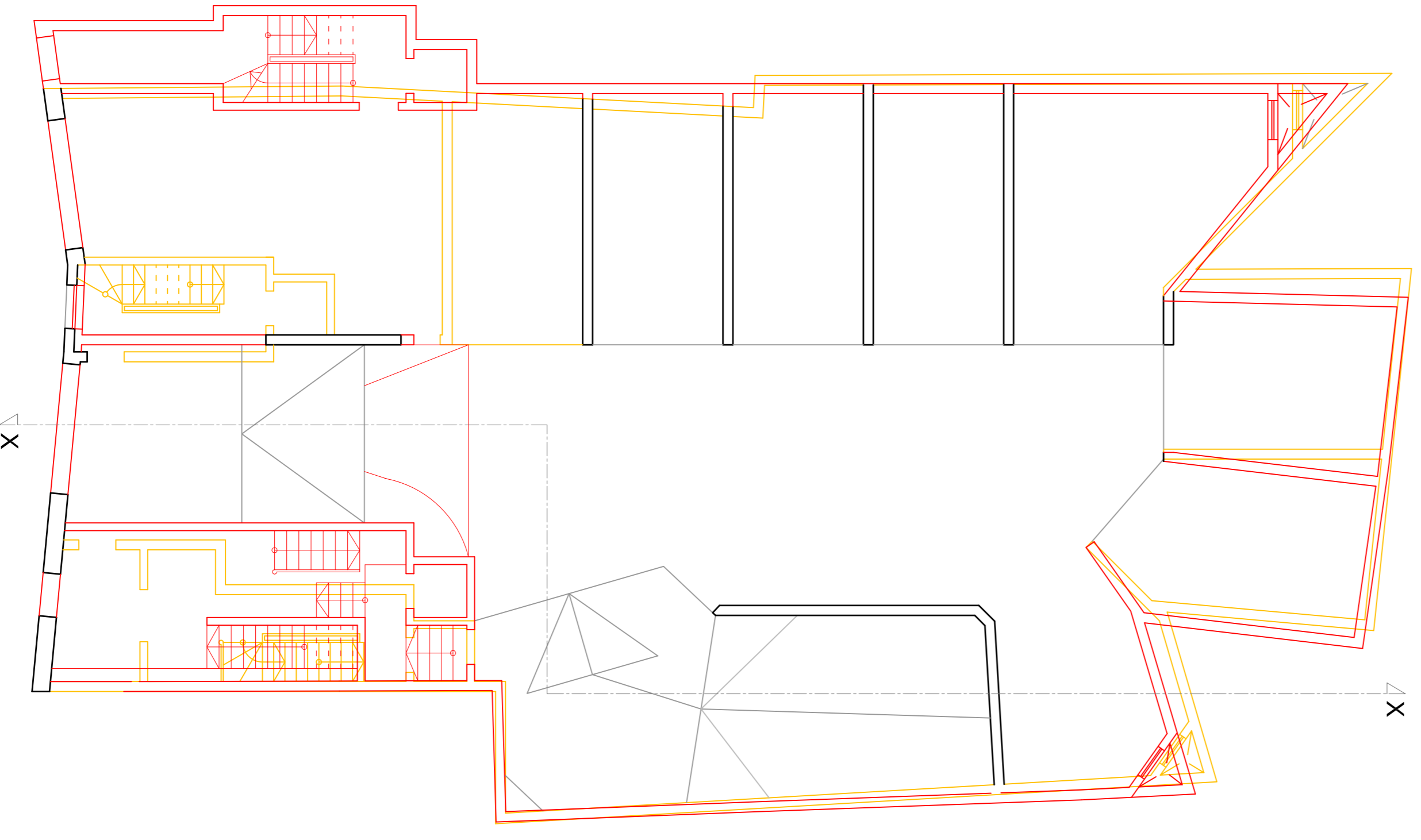
SITE AREA:- 457.5m²

FLOOR LEVEL	INTERNAL AREA	EXTERNAL AREA	10% of 2 Bedroom	10% of 3 Bedroom	GROSS FLOOR AREA
BASEMENT					
Semi-BASEMENT					455.0m ²
GROUNDFL					455.0m ²
FLAT No.1	114.3m ²	22.1m ²		11.5m ²	125.8m ²
FLAT No.2	115.6m ²	21.8m ²		11.5m ²	127.1m ²
FLAT No.3	117.0m ²	16.6m ²		11.5m ²	133.6m ²
FLAT No.4	114.3m ²	7.0m ²			121.3m ²
FLAT No.5	113.8m ²	6.8m ²			122.4m ²
FLAT No.6	117.0m ²	9.1m ²			126.1m ²
FLAT No.7	114.3m ²	7.0m ²			121.3m ²
FLAT No.8	115.6m ²	6.8m ²			122.4m ²
FLAT No.9	117.0m ²	9.1m ²			126.1m ²
FLAT No.10	114.3m ²	7.0m ²			121.3m ²
FLAT No.11	115.6m ²	6.5m ²			126.4m ²
FLAT No.12	117.0m ²	9.1m ²			126.4m ²
FLAT No.13	114.7m ²	35.0m ²		11.5m ²	126.2m ²
FLAT No.14	137.7m ²	45.0m ²		11.5m ²	149.2m ²

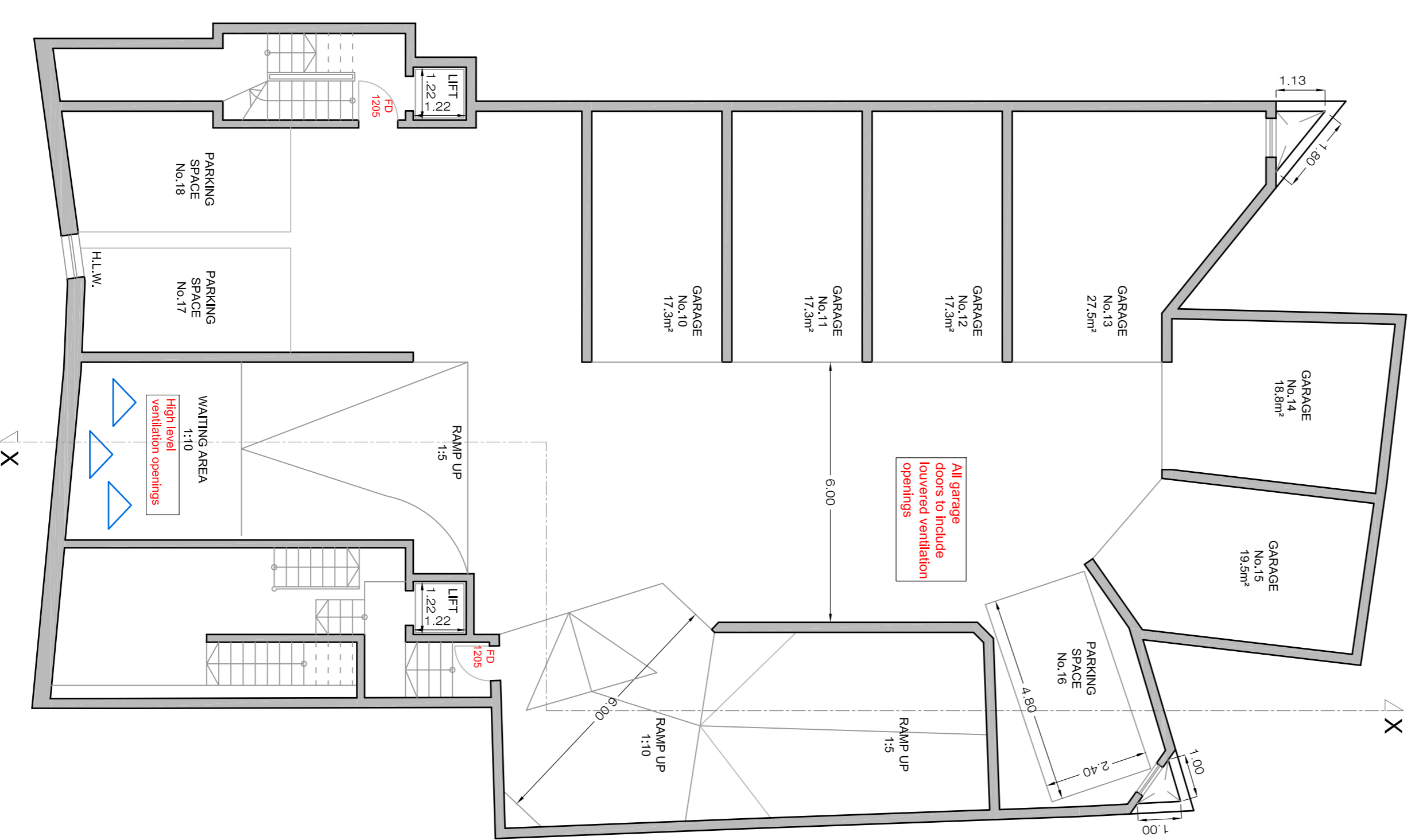
NOTE:-
 ERECT PROPOSED
 DEMOLISH PROPOSED



Semi-Basement as Approved in
 Scale 1:100



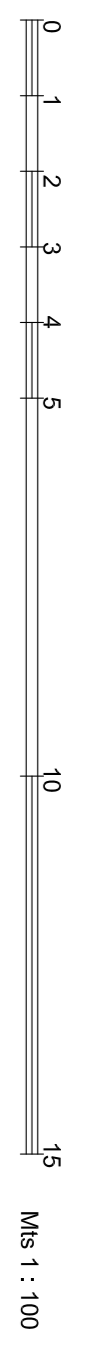
SEMI-BASEMENT (Basement) showing Additions & Alterations
 Scale 1:100



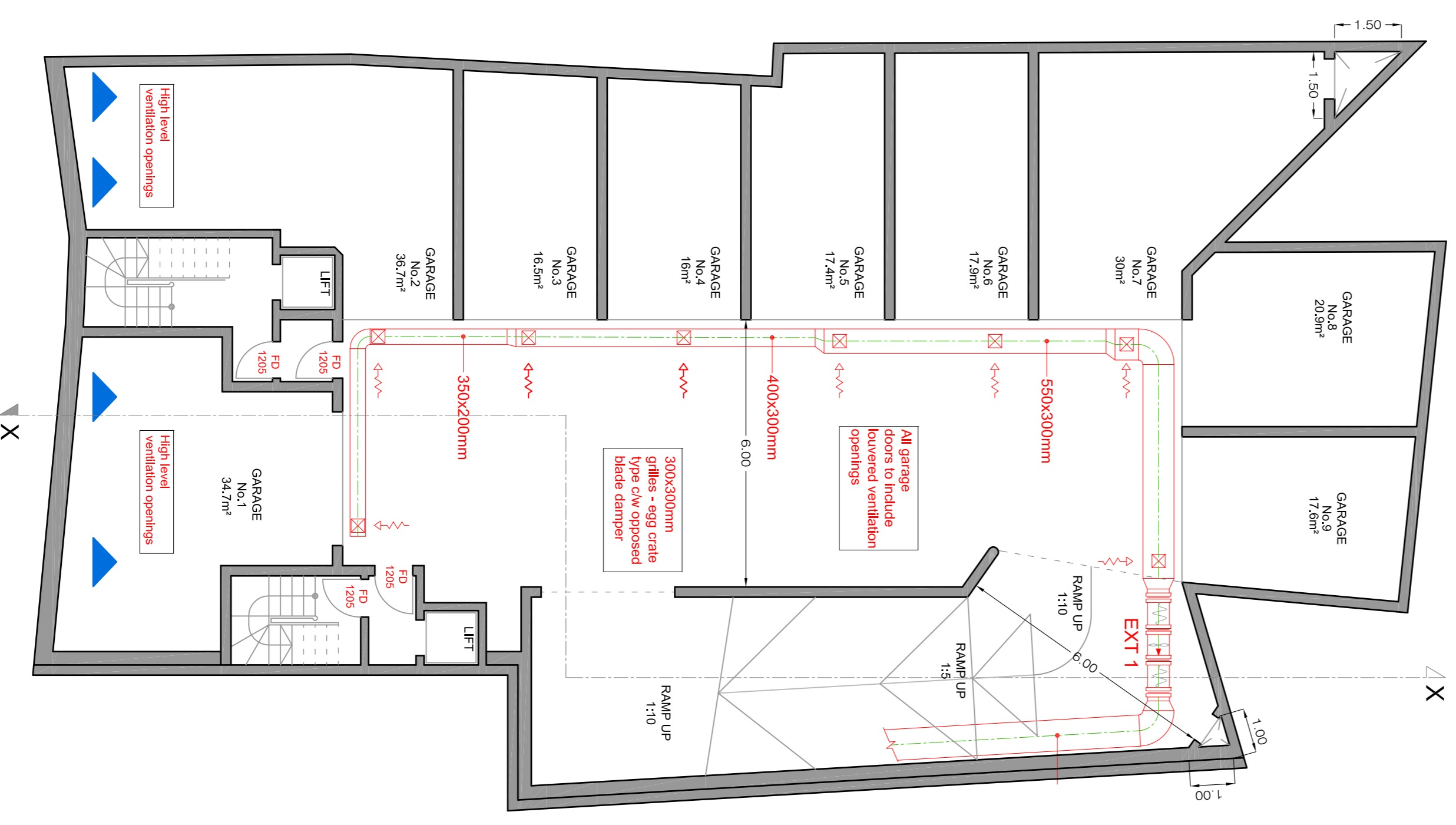
BASEMENT as PROPOSED
 Scale 1:100

SITE AREA:- 457.5m²

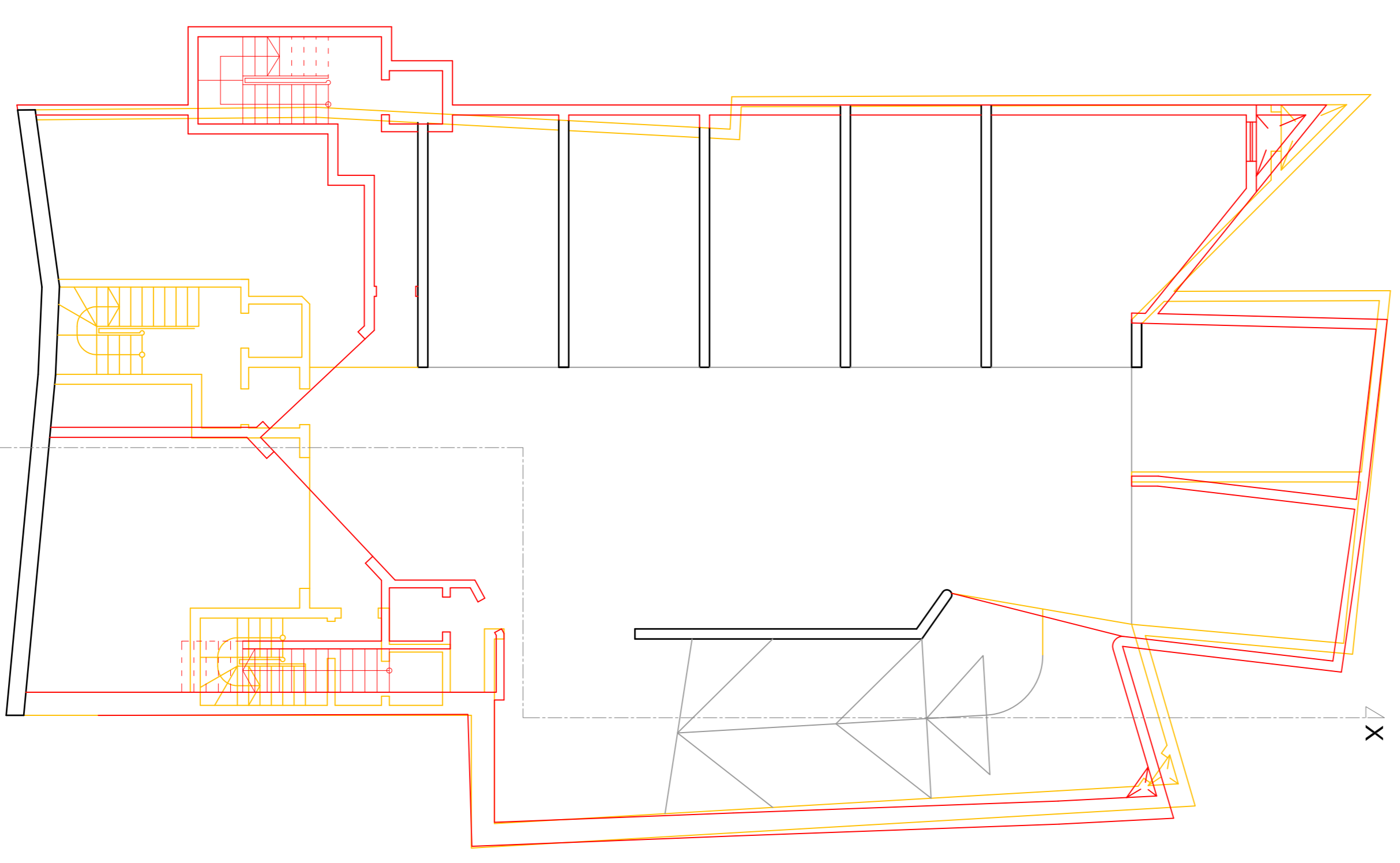
FLOOR LEVEL	INTERNAL AREA	EXTERNAL AREA	10% of 2 Bedroom	10% of 3 Bedroom	GROSS FLOOR AREA
BASEMENT					
Semi-BASEMENT					455.0m ²
GROUND					455.0m ²
Flat No.1	114.3m ²	22.1m ²		11.5m ²	125.8m ²
Flat No.2	115.6m ²	21.8m ²		11.5m ²	127.1m ²
Flat No.3	117.0m ²	16.6m ²		11.5m ²	133.6m ²
Flat No.4	114.3m ²	7.0m ²			121.3m ²
Flat No.5	113.8m ²	6.8m ²			122.4m ²
Flat No.6	117.0m ²	9.1m ²			126.1m ²
Flat No.7	114.3m ²	7.0m ²			121.3m ²
Flat No.8	115.6m ²	6.8m ²			122.4m ²
Flat No.9	117.0m ²	9.1m ²			126.1m ²
Flat No.10	114.3m ²	7.0m ²			121.3m ²
Flat No.11	115.6m ²	6.5m ²			122.4m ²
Flat No.12	117.0m ²	9.1m ²			126.1m ²
Flat No.13	114.7m ²	35.0m ²		11.5m ²	126.2m ²
Flat No.14	137.7m ²	45.0m ²		11.5m ²	149.2m ²



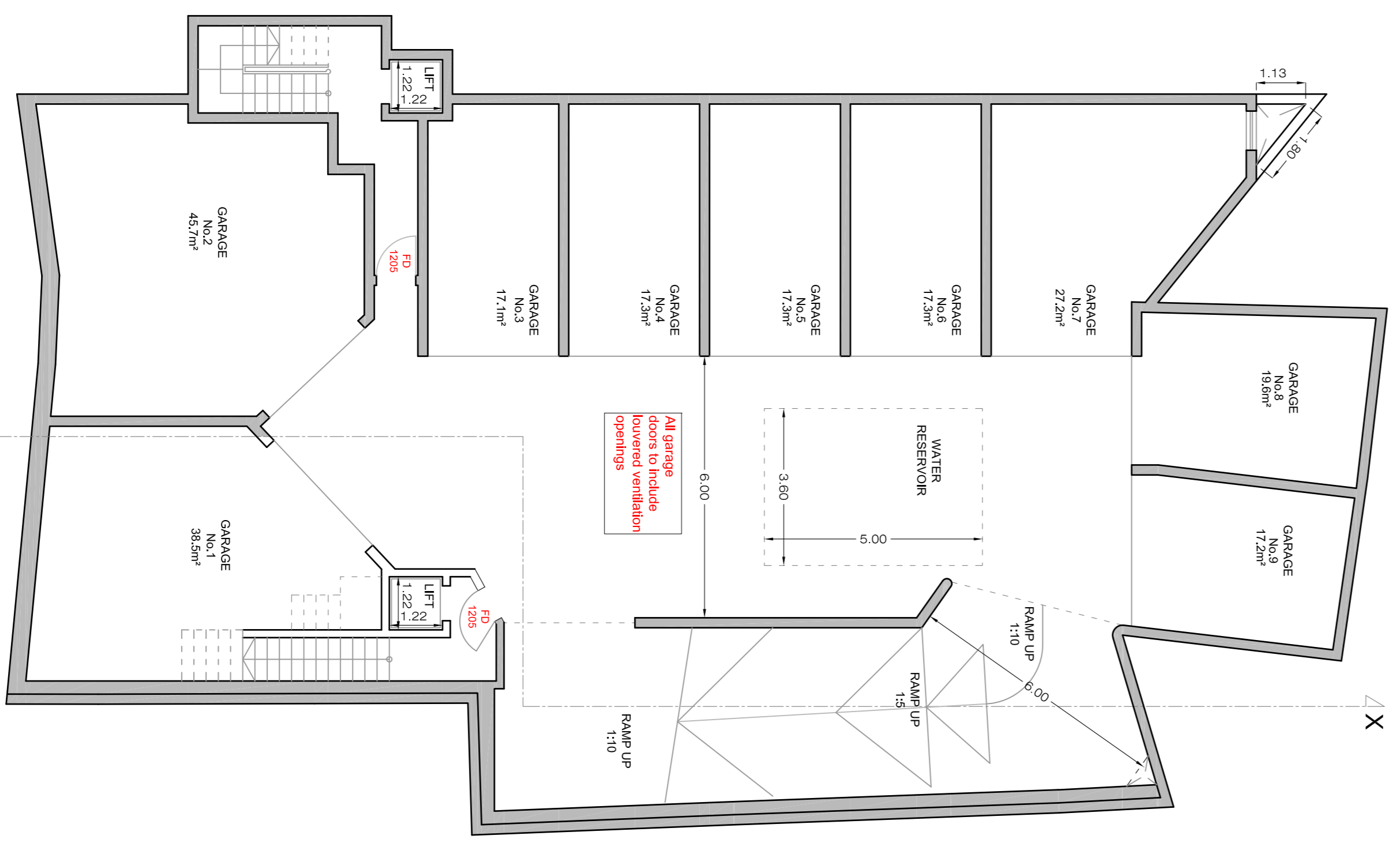
NOTE:-
▬ ERECT PROPOSED
▬ DEMOLISH PROPOSED



BASEMENT as Approved In
Scale 1:100



BASEMENT (Lower Basement) showing Additions & Alterations
Scale 1:100



LOWER BASEMENT as PROPOSED
Scale 1:100