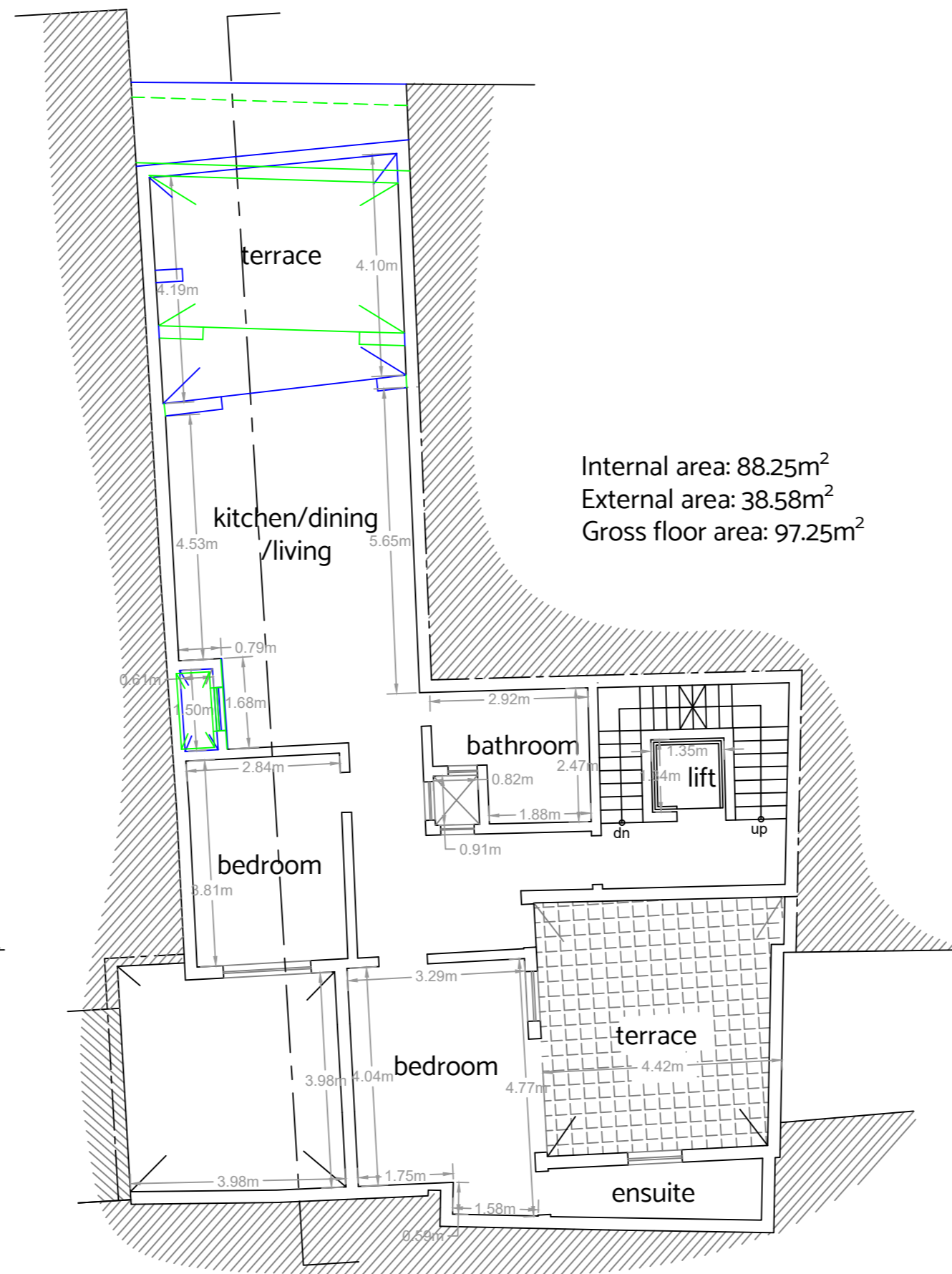


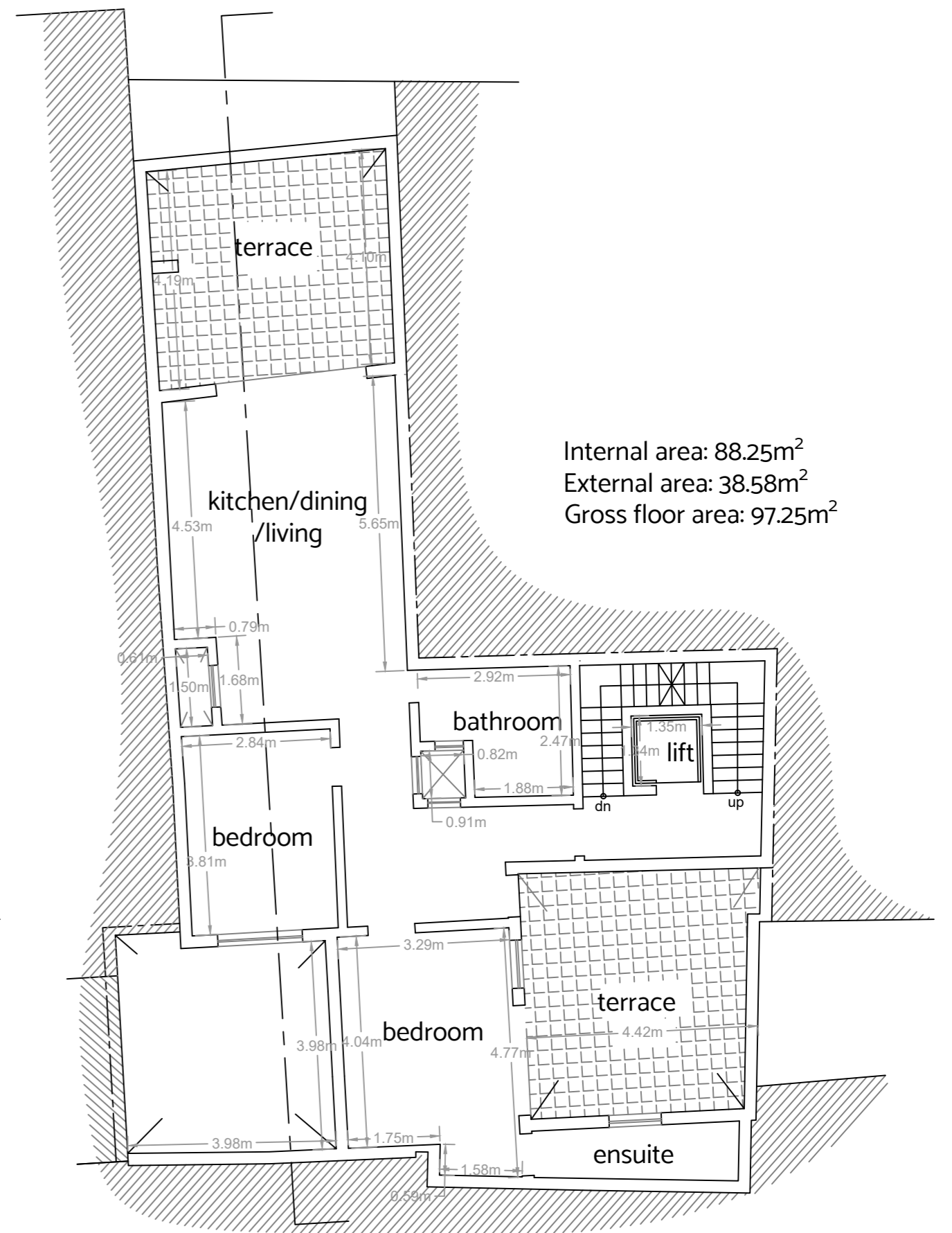
Internal area: 82.17m<sup>2</sup>  
External area: 47.52m<sup>2</sup>  
Gross floor area: 91.17m<sup>2</sup>

Approved Penthouse Floor Plan



Internal area: 88.25m<sup>2</sup>  
External area: 38.58m<sup>2</sup>  
Gross floor area: 97.25m<sup>2</sup>

Existing Penthouse Floor Plan  
(to be sanctioned with colour coding)



Internal area: 88.25m<sup>2</sup>  
External area: 38.58m<sup>2</sup>  
Gross floor area: 97.25m<sup>2</sup>

Existing Penthouse Floor Plan  
(to be sanctioned without colour coding)

|  |  |  |                          |                           |             |
|--|--|--|--------------------------|---------------------------|-------------|
| <p>Legend</p> <p>Blue - As constructed to be sanctioned<br/>Green - Approved but not constructed</p> | <p>Project</p> <p>To sanction differences.</p> | <p>Client</p>  |                          | <p>Location</p>           |             |
|  |  | <p>Dwg. Name</p> <p>Approved &amp; Existing Penthouse Floor Plan</p> | <p>Dwg. No.</p> <p>5</p> | <p>Scale</p> <p>1:100</p> | <p>Date</p> |