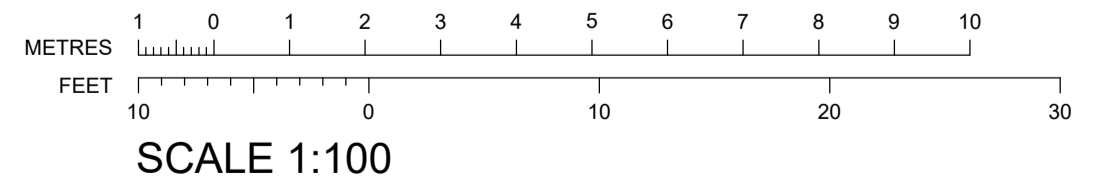


	INTERNAL	EXTERNAL	TOTAL AREA	10% of 1,2 & 3 bed	GFA
MAISONNETTE C1	93 sqm	20 sqm	113 sqm	9 sqm	102 sqm
MAISONNETTE C2	83 sqm	17 sqm	100 sqm	9 sqm	92 sqm
MAISONNETTE D1	90 sqm	0 sqm	90 sqm	9 sqm	90 sqm
MAISONNETTE D2	60.7 sqm	0 sqm	60.7 sqm	5.5	60.7 sqm
UNIT D3	92 sqm	0 sqm	92 sqm	9	92 sqm
MAISONNETTE D4	106 sqm	10.6 sqm	116.6 sqm	11.5 sqm	116.6 sqm

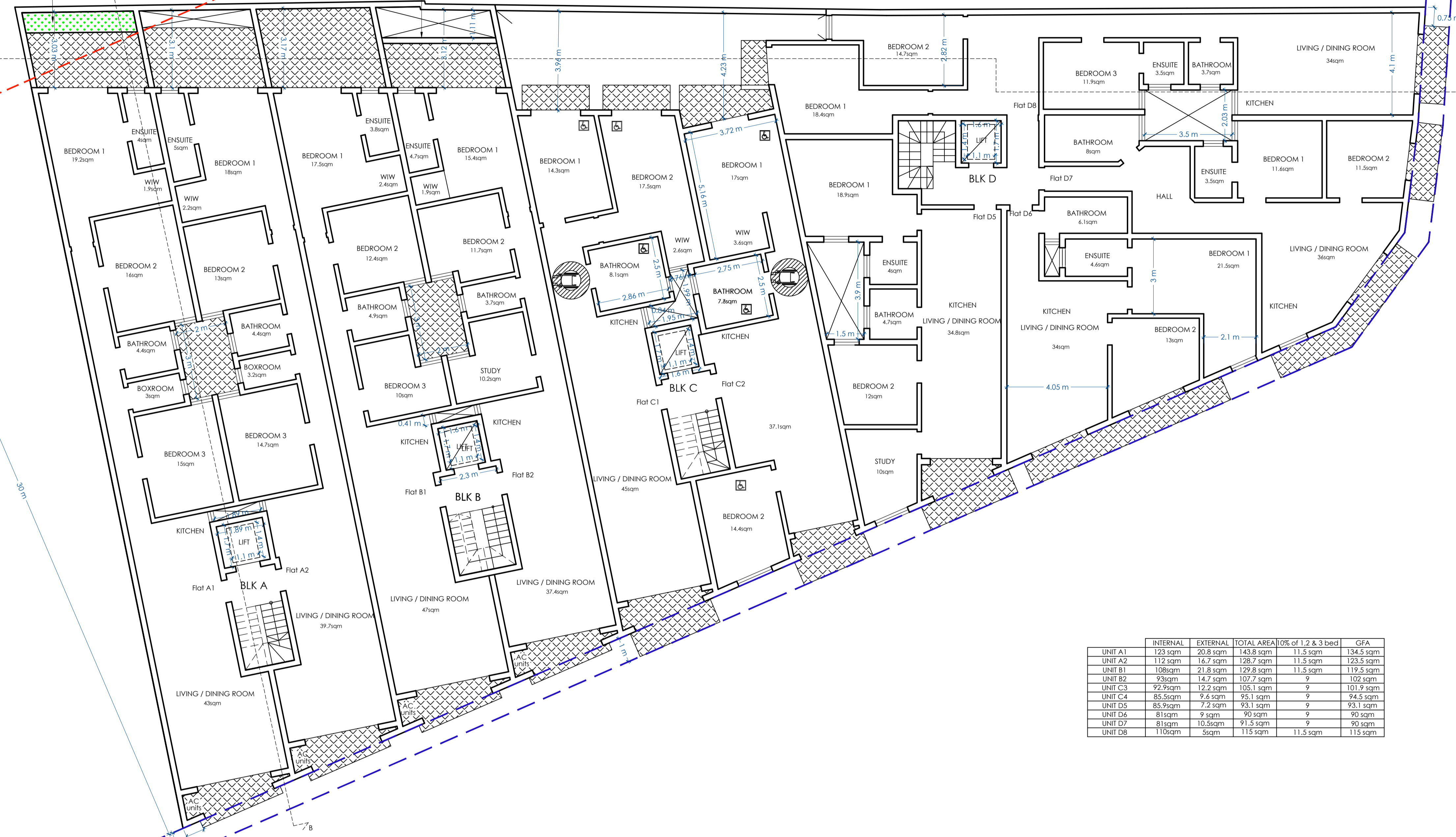
**GROUND FLOOR**  
PROPOSED  
SCALE 1:100



Drawing Title GROUND FLOOR PLAN		Path	
File No 20019	Draw No 20019-A-02	Revision 2	
Scale 1:100 (A1)	Date 19.09.2020	Drawn by L.S.	Checked



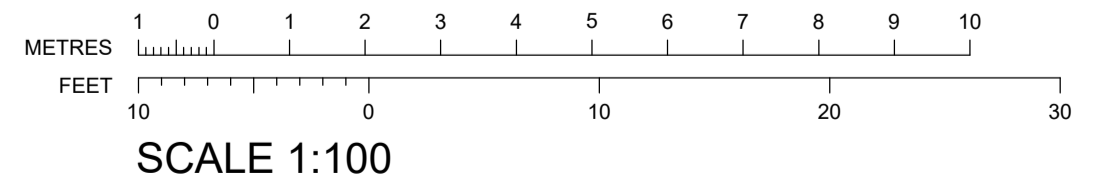
Soft Landscape (1 metre soil)



	INTERNAL	EXTERNAL	TOTAL AREA	% of 1, 2 & 3 bed	GFA
UNIT A1	123 sqm	20.8 sqm	143.8 sqm	11.5 sqm	134.5 sqm
UNIT A2	112 sqm	16.7 sqm	128.7 sqm	11.5 sqm	123.5 sqm
UNIT B1	108 sqm	21.8 sqm	129.8 sqm	11.5 sqm	119.5 sqm
UNIT B2	93 sqm	14.7 sqm	107.7 sqm	9	102 sqm
UNIT C3	92.9 sqm	12.2 sqm	105.1 sqm	9	101.9 sqm
UNIT C4	85.5 sqm	9.4 sqm	95.1 sqm	9	94.5 sqm
UNIT D5	85.9 sqm	7.2 sqm	93.1 sqm	9	93.1 sqm
UNIT D6	81 sqm	9 sqm	90 sqm	9	90 sqm
UNIT D7	81 sqm	10.5 sqm	91.5 sqm	9	90 sqm
UNIT D8	110 sqm	5 sqm	115 sqm	11.5 sqm	115 sqm

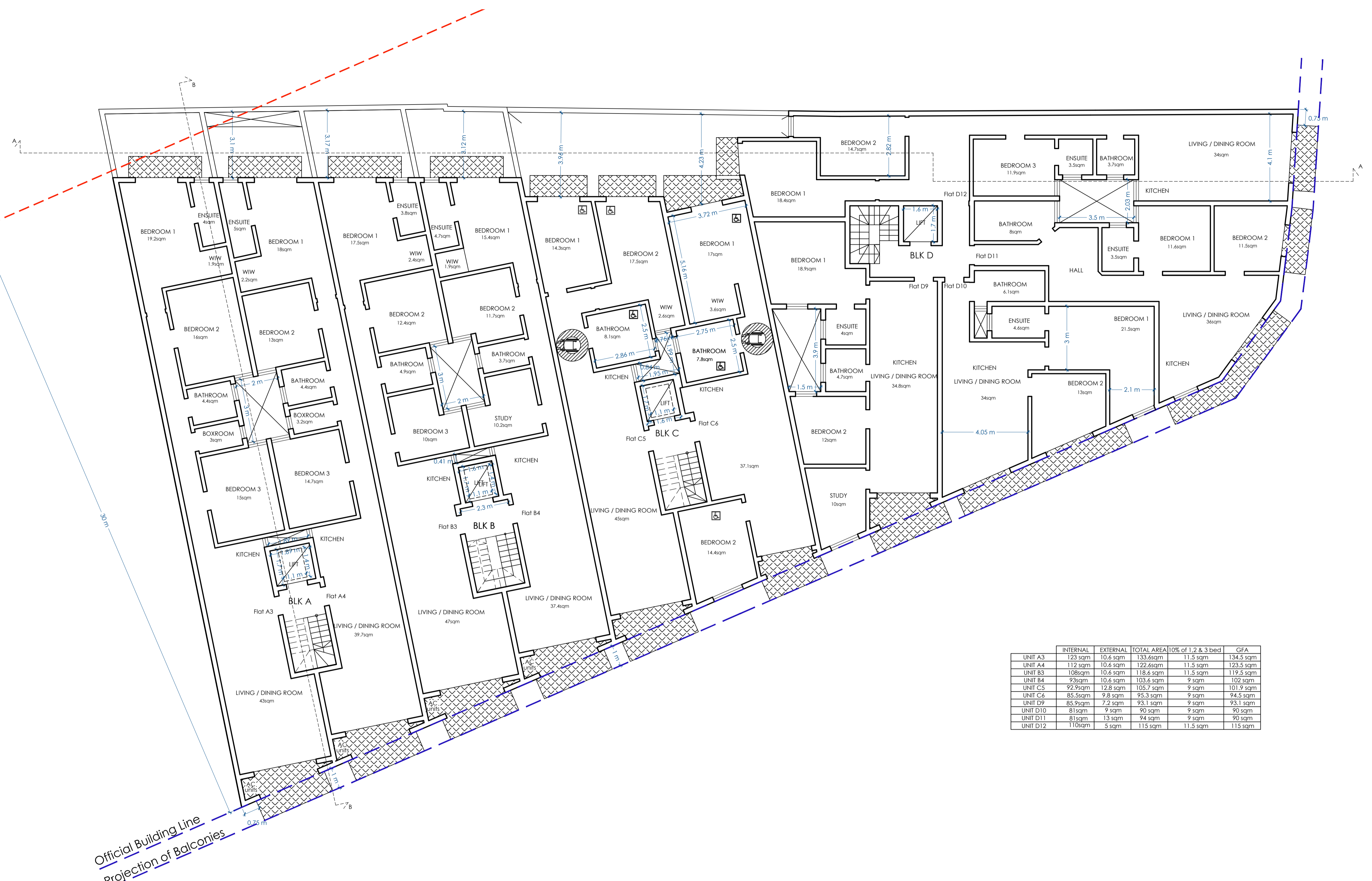
Official Building Line  
Projection of Balconies

FIRST FLOOR  
PROPOSED SCALE 1:100



Drawing Title FIRST FLOOR PLAN		Path	
File No 20019	Draw No 20019-A-03	Scale 1:100 (A1)	Revision 2
Date 19.09.2020	Drawn by L.S.	Checked	

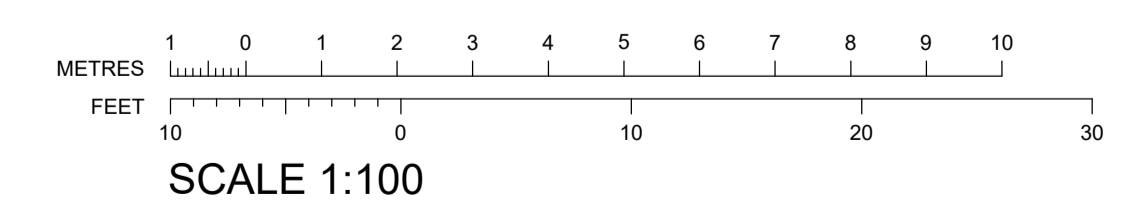




Official Building Line  
Projection of Balconies

SECOND FLOOR  
PROPOSED SCALE 1:100

	INTERNAL	EXTERNAL	TOTAL AREA	10% of 1, 2 & 3 bed	GFA
UNIT A3	123 sqm	10.6 sqm	133.6sqm	11.5 sqm	134.5 sqm
UNIT A4	112 sqm	10.6 sqm	122.6sqm	11.5 sqm	123.5 sqm
UNIT B3	108sqm	10.6 sqm	118.6 sqm	11.5 sqm	119.5 sqm
UNIT B4	93sqm	10.6 sqm	103.6 sqm	9 sqm	102 sqm
UNIT C5	92.9sqm	12.8 sqm	105.7 sqm	9 sqm	101.9 sqm
UNIT C6	85.5sqm	9.8 sqm	95.3 sqm	9 sqm	94.5 sqm
UNIT D9	85.9sqm	7.2 sqm	93.1 sqm	9 sqm	93.1 sqm
UNIT D10	81sqm	9 sqm	90 sqm	9 sqm	90 sqm
UNIT D11	81sqm	13 sqm	94 sqm	9 sqm	90 sqm
UNIT D12	110sqm	5 sqm	115 sqm	11.5 sqm	115 sqm



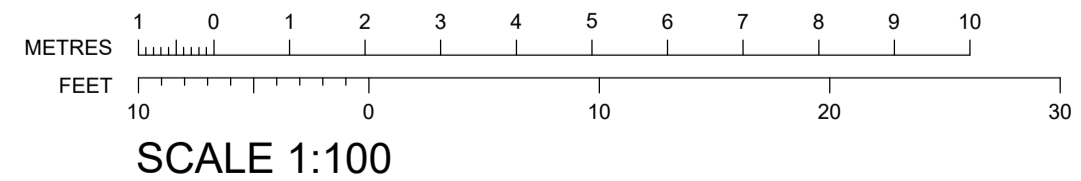
Drawing Title SECOND FLOOR PLAN		Path	
File No 20019	Draw No 20019-A-04	Revision 2	
Scale 1:100 (A1)	Date 19.09.2020	Drawn by L.S.	Checked





	INTERNAL	EXTERNAL	TOTAL AREA	10% of 2/3bed	GFA
UNIT A5	107.6 sqm	19.2 sqm	126.8 sqm	11.5 sqm	119.1 sqm
UNIT A6	96.5 sqm	19 sqm	115.5 sqm	9 sqm	105.5 sqm
UNIT B5	88.6 sqm	20 sqm	108.6 sqm	9 sqm	97.6 sqm
UNIT B6	81 sqm	18.5 sqm	99.5 sqm	9 sqm	90 sqm
UNIT C7	79 sqm	18.5 sqm	97.5 sqm	5.5 sqm	84.5 sqm
UNIT C8	60 sqm	23 sqm	83 sqm	5.5 sqm	65.5 sqm
UNIT D13	105.5 sqm	50 sqm	155.5 sqm	11.5 sqm	117 sqm
UNIT D14	132 sqm	39 sqm	171 sqm	11.5 sqm	143.5 sqm

RECEDED FLOOR  
PROPOSED  
SCALE 1:100



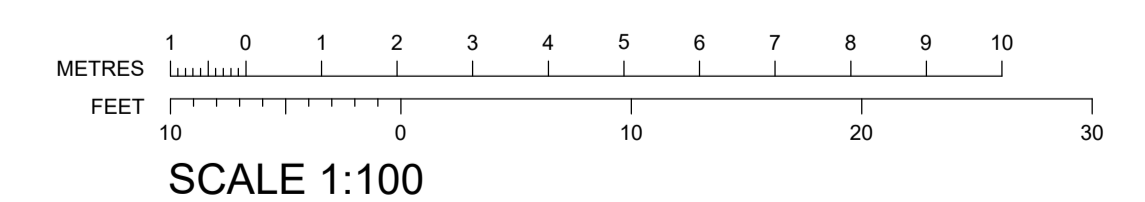
Drawing Title RECEDED FLOOR PLAN		Path	
File No 20019	Draw No 20019-A-05	Revision 2	
Scale 1:100 (A1)	Date 19.09.2020	Drawn by L.S.	Checked





**BASEMENT**  
PROPOSED

SCALE 1:100



Drawing Title		Path	
BASEMENT PLAN			
File No	20019	Drawn by	L.S.
Scale	1:100 (A1)	Date	19.09.2020
Drawn by	L.S.	Checked	
Drawg No	20019-A-01	Revision	2



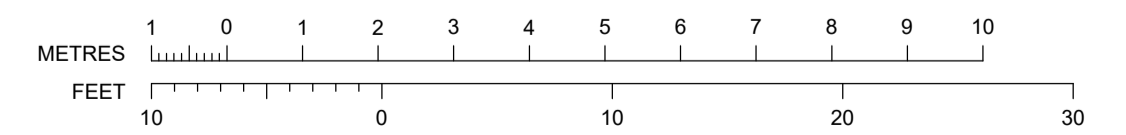
MAXIMUM POTENTIAL HEIGHT - 12.3 metres



ELEVATION  
PROPOSED

SCALE 1:100

**MATERIALS:**  
 UFS: Unpainted Franko Stone  
 GR: Grey Render  
 WAA: White Aluminum Apertures  
 WWIR: White Wrought Iron Railing  
 PUOD: Polyurethane Up and Over Door



SCALE 1:100

Drawing Title PROPOSED ELEVATION		Path	
File No 20019	Draw No 20019-A-06	Version 1	
Scale 1:100 (A1)	Date 19.09.2020	Drawn by L.S.	Checked