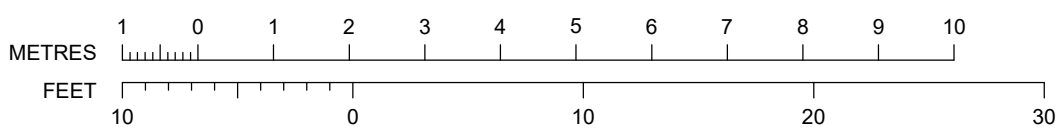
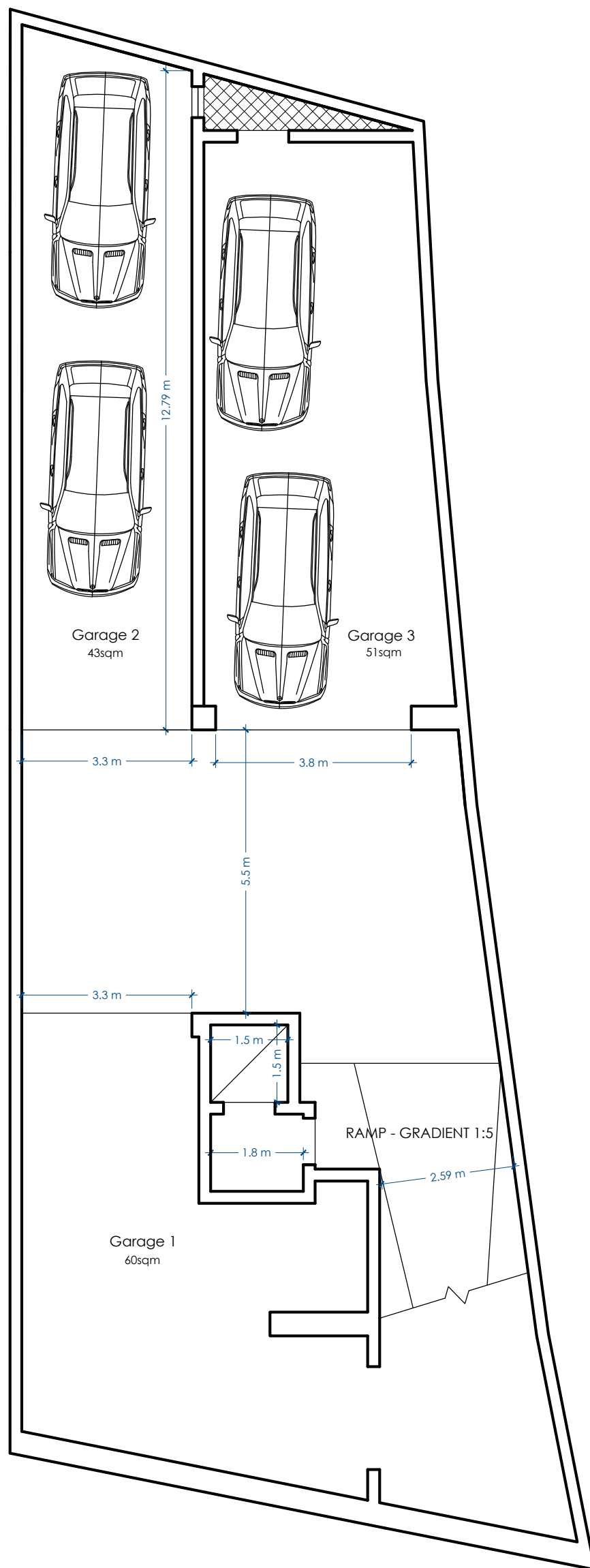




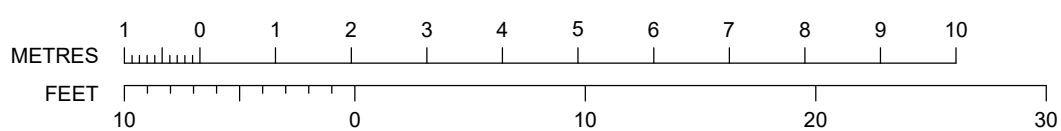
Beige Plaster finish
 TC - Travertine Clading
 WAR - White ALuminium Railing
 WAA - White ALuminium Apertures



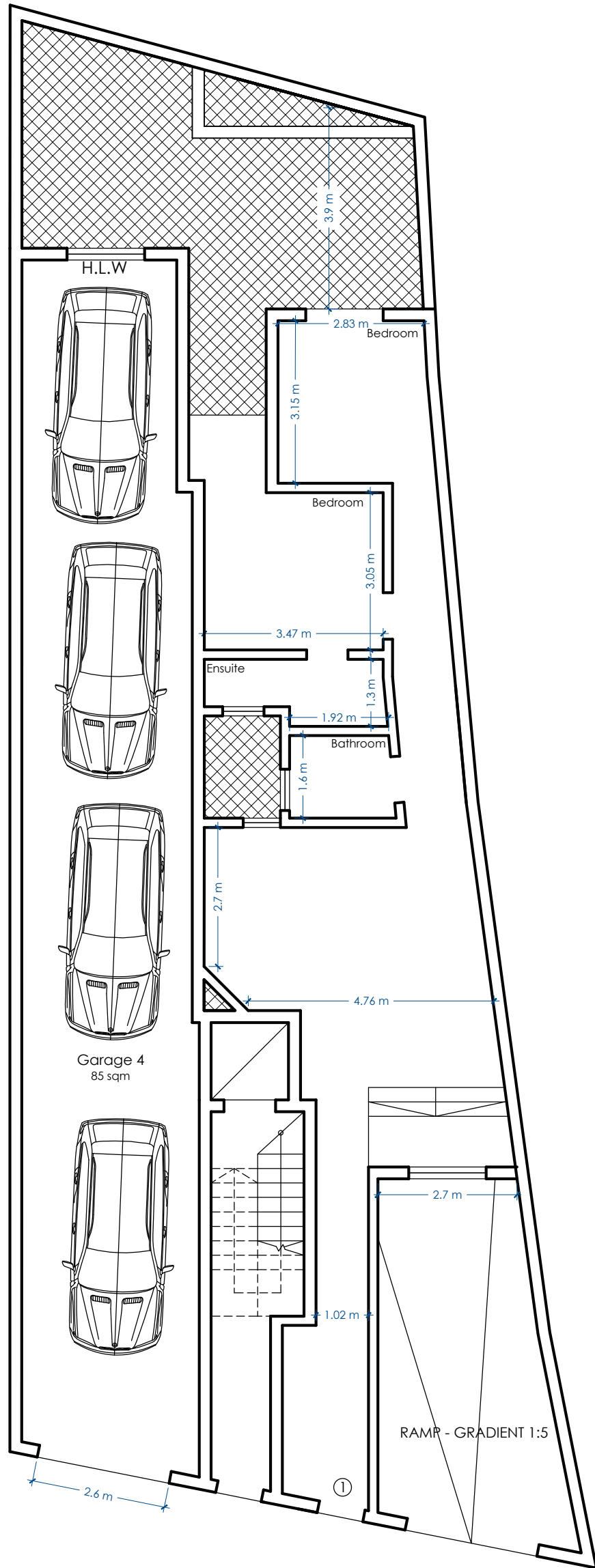
SCALE 1:100



BASEMENT FLOOR
 PROPOSED Scale 1:100

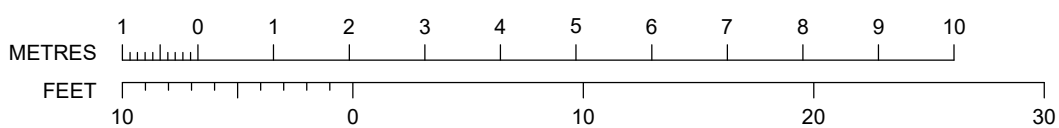


SCALE 1:100

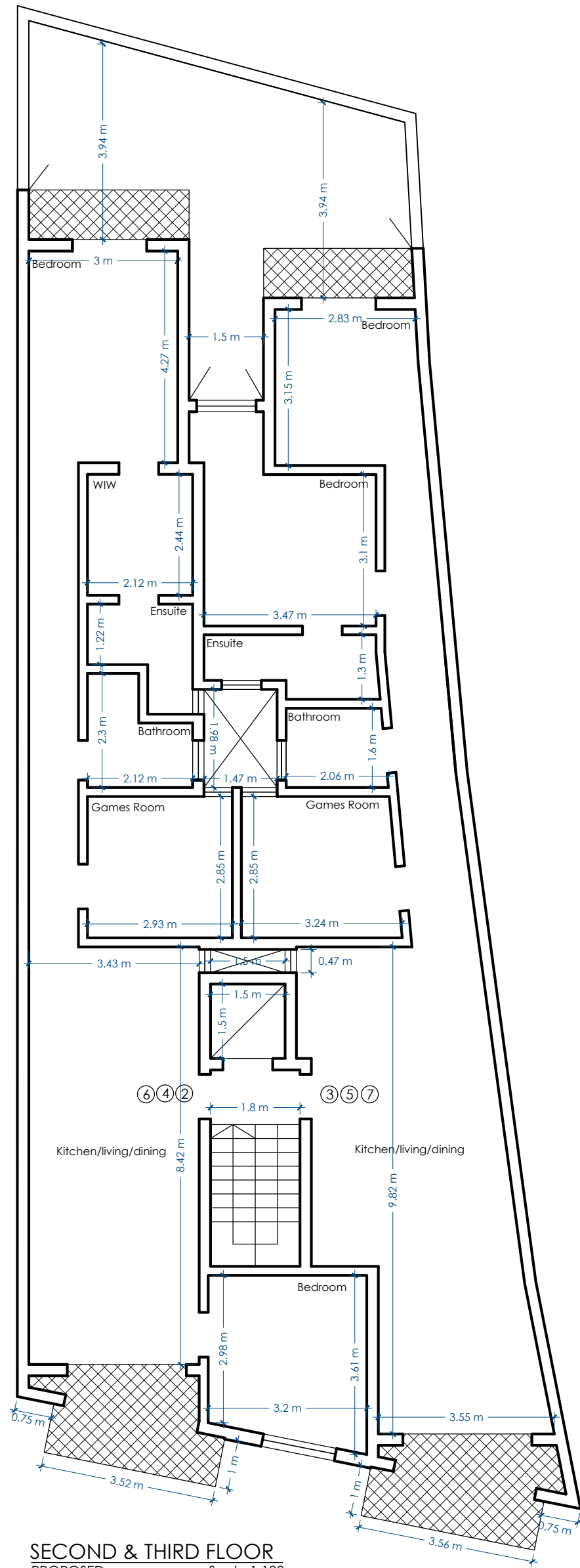


GROUND FLOOR
PROPOSED Scale 1:100

UNIT	INTERNAL	EXTERNAL	TOTAL AREA	10% of 1,2,3 bed	GFA
1	89 sqm	34 sqm	123 sqm	9 sqm	98 sqm

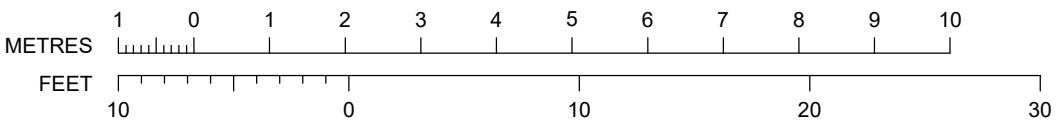


SCALE 1:100

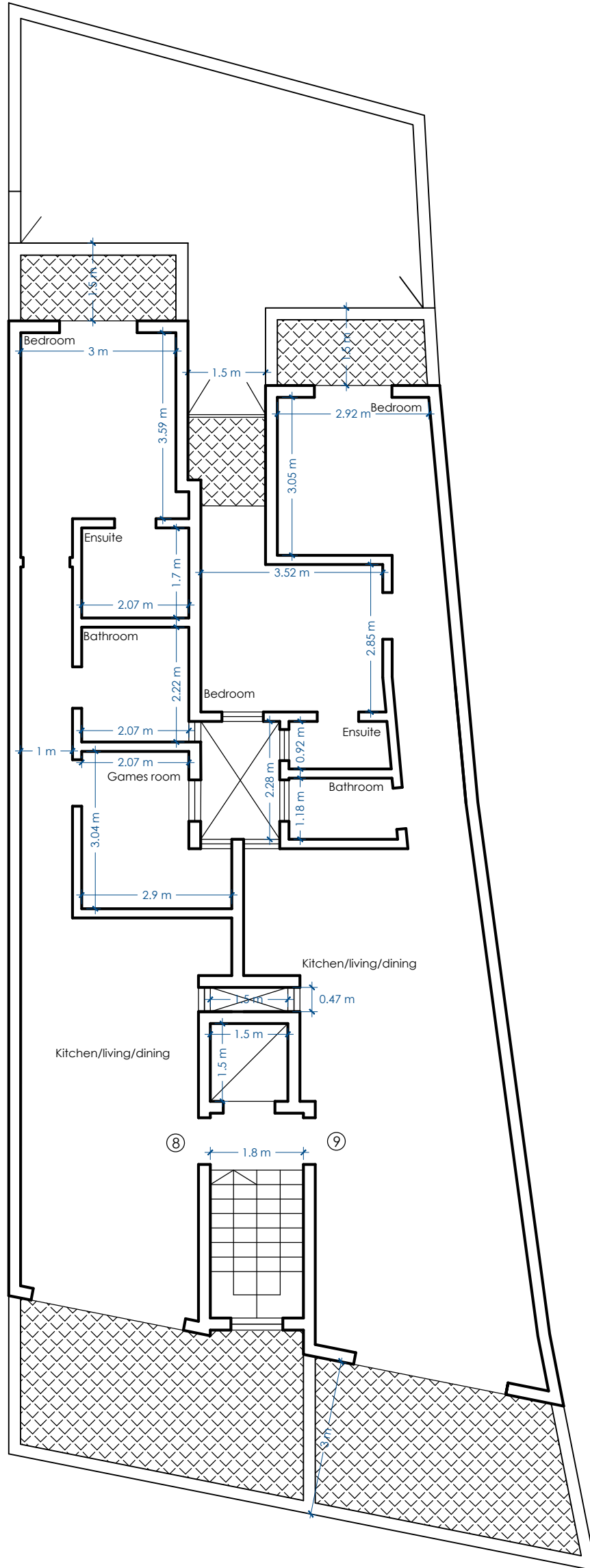


SECOND & THIRD FLOOR
PROPOSED Scale 1:100

UNIT	INTERNAL	EXTERNAL	TOTAL AREA	10% of 1,2,3 bed	GFA
2/4/6	97.8 sqm	10.3 sqm	108.1 sqm	9 sqm	106.8 sqm
3/5/7	99.7 sqm	10.2 sqm	109.9 sqm	9 sqm	108.7 sqm

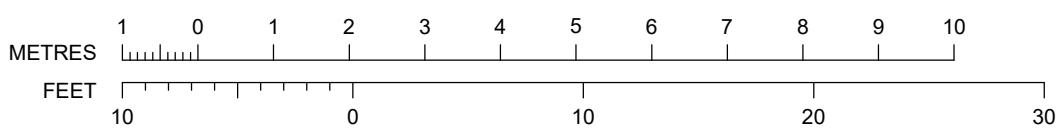


SCALE 1:100



RECEDED FLOOR
PROPOSED Scale 1:100

UNIT	INTERNAL	EXTERNAL	TOTAL AREA	10% of 1,2,3 bed	GFA
8	72.5 sqm	23.3 sqm	95.8 sqm	5.5 sqm	78 sqm
9	85 sqm	20.8 sqm	105.8 sqm	9 sqm	94 sqm



SCALE 1:100