



Xlendi, Gozo  
Third floor Level Apartments

Apt. C3

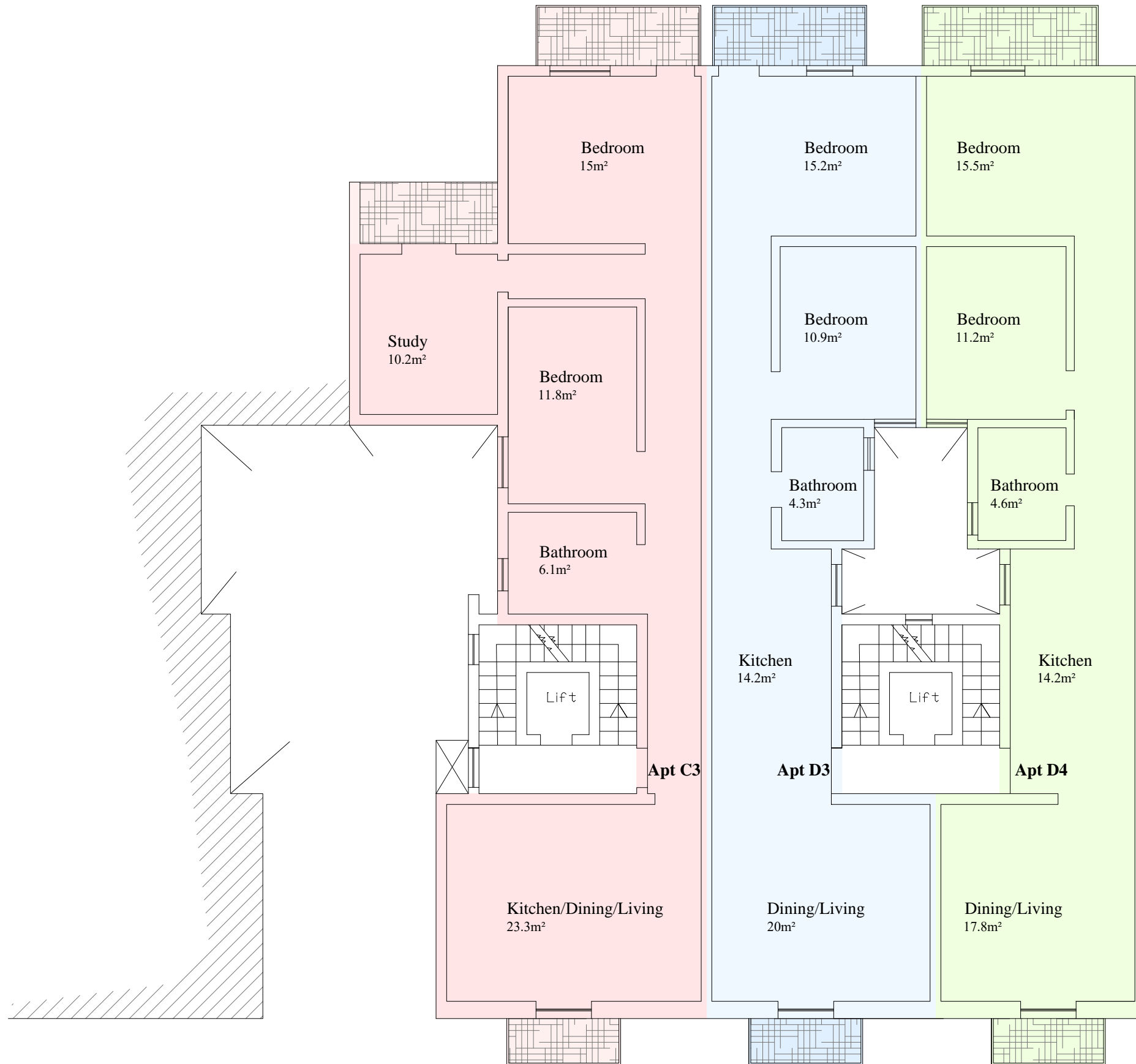
2 Bedrooms  
1 Study  
1 Bathroom  
Internal floor area 100m<sup>2</sup>  
External floor area 11m<sup>2</sup>

Apt. D3

2 Bedrooms  
1 Bathroom  
Internal floor area 85m<sup>2</sup>  
External floor area 6m<sup>2</sup>

Apt. D4

2 Bedrooms  
1 Bathroom  
Internal floor area 84m<sup>2</sup>  
External floor area 7m<sup>2</sup>



Third floor level plan  
scale 1:100

Xlendi, Gozo  
Fourth floor Level Apartments

**Apt. C4**  
2 Bedrooms  
1 Study  
1 Bathroom  
Internal floor area 100m<sup>2</sup>  
External floor area 11m<sup>2</sup>

**Apt. D5**  
2 Bedrooms  
1 Bathroom  
Internal floor area 85m<sup>2</sup>  
External floor area 6m<sup>2</sup>

**Apt. D6**  
2 Bedrooms  
1 Bathroom  
Internal floor area 84m<sup>2</sup>  
External floor area 7m<sup>2</sup>



Fourth floor level plan  
scale 1:100

Xlendi, Gozo  
Fifth floor Level Apartments

Apt. C5

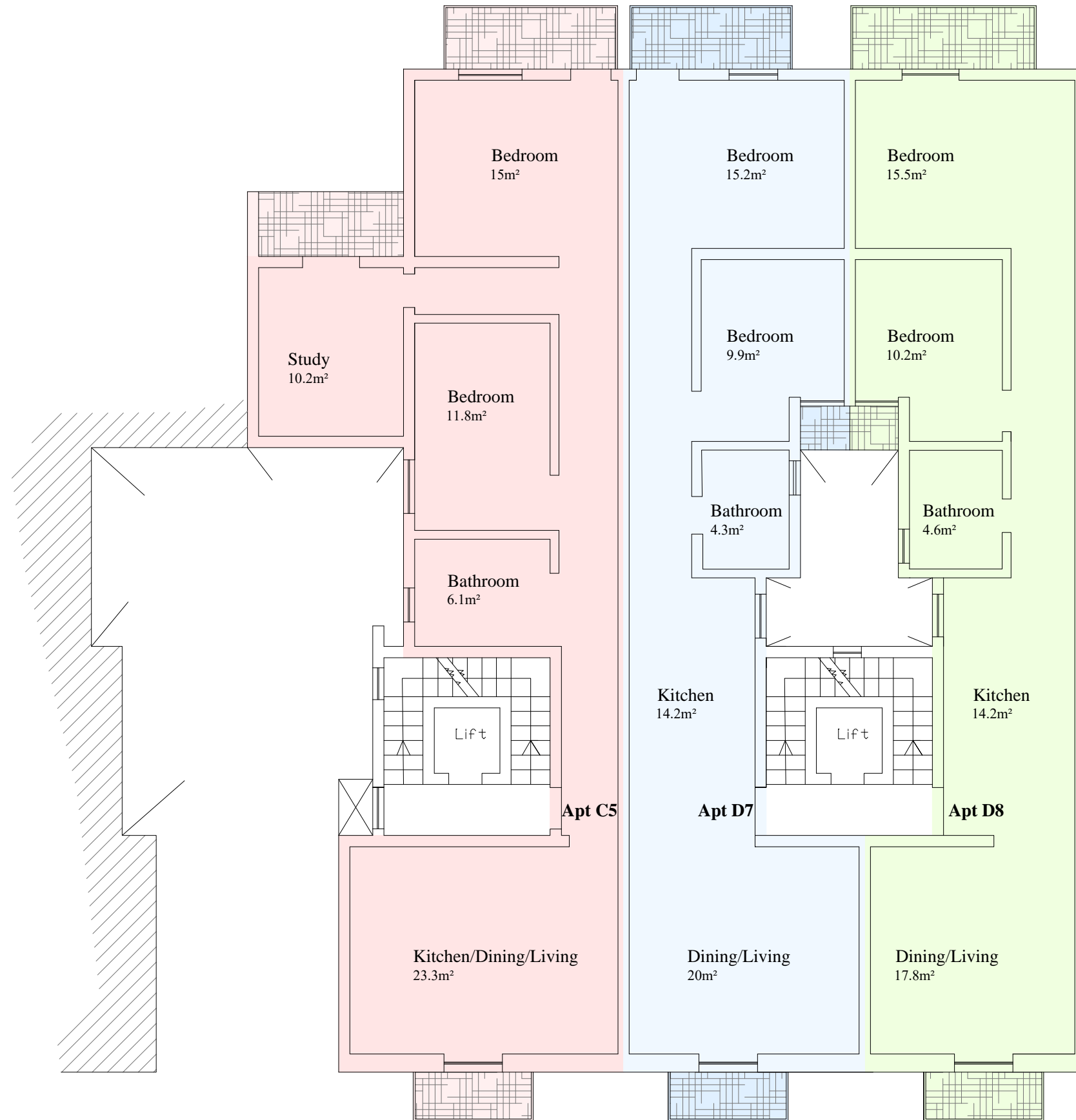
2 Bedrooms  
1 Study  
1 Bathroom  
Internal floor area 100m<sup>2</sup>  
External floor area 11m<sup>2</sup>

Apt. D7

2 Bedrooms  
1 Bathroom  
Internal floor area 84m<sup>2</sup>  
External floor area 7m<sup>2</sup>

Apt. D8

2 Bedrooms  
1 Bathroom  
Internal floor area 83m<sup>2</sup>  
External floor area 8m<sup>2</sup>



Fifth floor level plan  
scale 1:100

Xlendi, Gozo  
Penthouse Level

Apt. C6

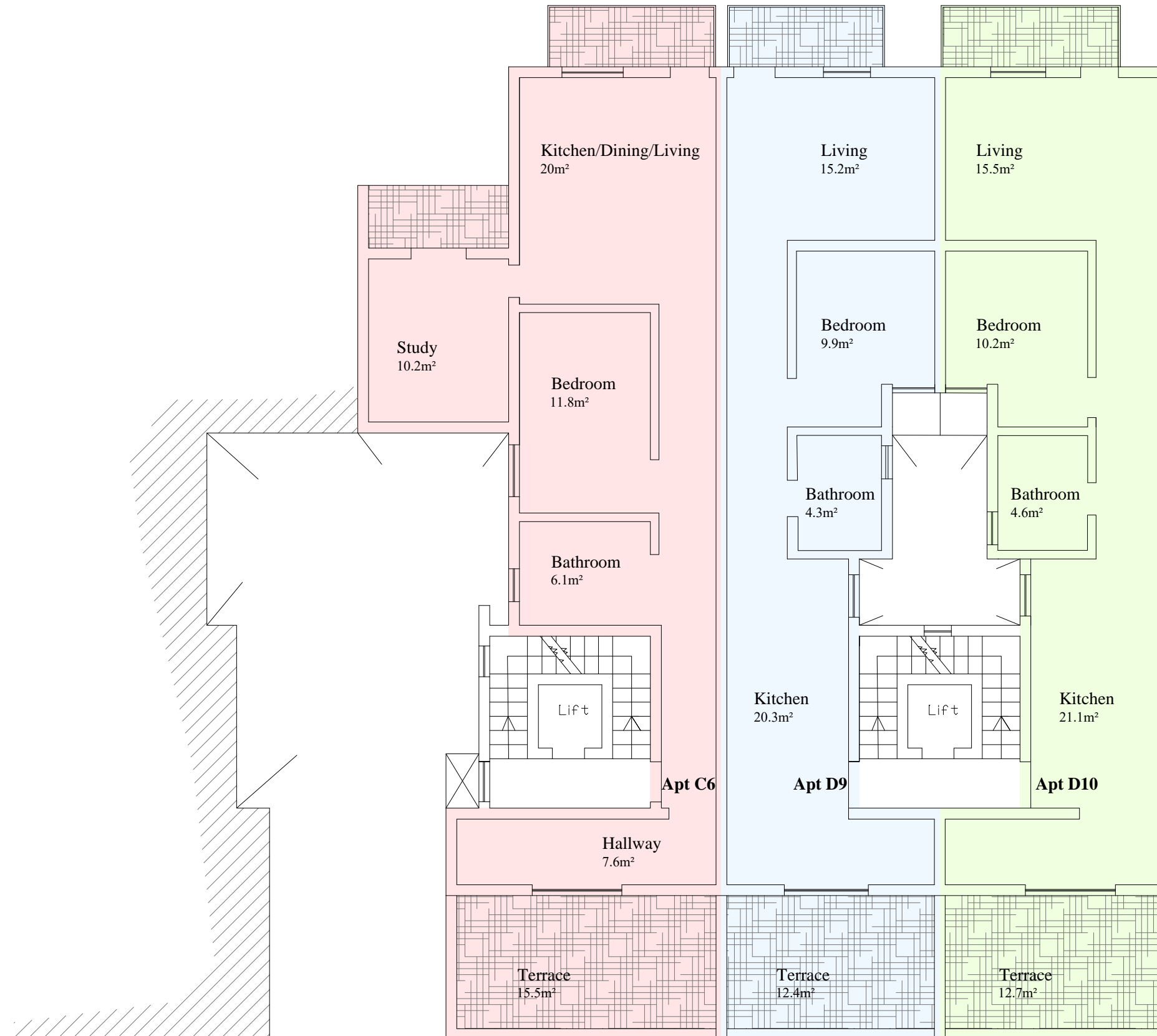
1 Bedroom  
1 Study  
1 Bathroom  
Internal floor area 83m<sup>2</sup>  
External floor area 26m<sup>2</sup>

Apt. D9

1 Bedroom  
1 Bathroom  
Internal floor area 68m<sup>2</sup>  
External floor area 18m<sup>2</sup>

Apt. D10

1 Bedroom  
1 Bathroom  
Internal floor area 70m<sup>2</sup>  
External floor area 19m<sup>2</sup>



Penthouse level  
scale 1:100