

Cornerstone Residence

Pricelist

Garages - Basement

Garage 6	SOLD	3-Car
Garage 7	Eur28,000 + Eur2,000 CP	1-Car
Garage 8	Eur32,000 + Eur2,000 CP	1-Car
Garage 9	SOLD	2-Car
Garage 10	SOLD	4-Car

Ground Floor Level

Garage 1	Eur111,000	2-Car
Garage 2	Eur120,500	2-Car
Garage 3	Eur130,000	2-Car
Garage 4	SOLD	2-Car
Garage 5	ON HOLD	2-Car
Office	SOLD	Class 1

Apartments

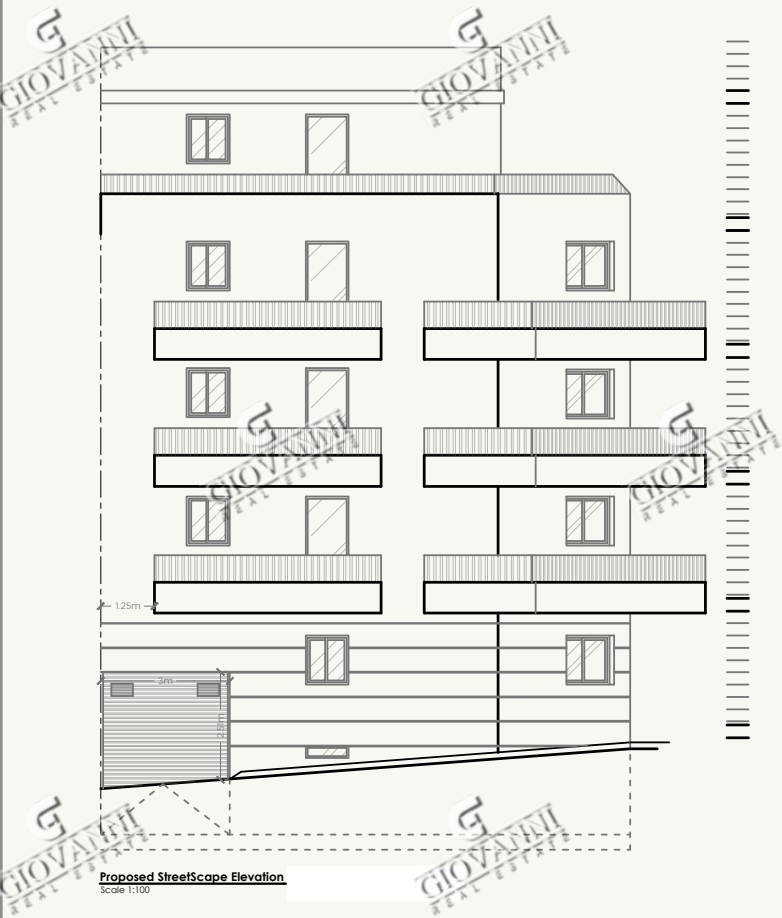
Apartment 1	SOLD	1st Floor	2-Bedroom	85.3sq.m + 9.1sq.m
Apartment 2	Eur180,000 + Eur8,000 CP	1st Floor	3-Bedroom	105.1sq.m + 19.5sq.m
Apartment 3	Eur165,000 + Eur8,000 CP	1st Floor	2-Bedroom + Study	98sq.m + 10.7sq.m
Apartment 4	SOLD	2nd Floor	2-Bedroom	85.3sq.m + 5.1sq.m
Apartment 5	Eur185,000 + Eur8,000 CP	2nd Floor	3-Bedroom	105.1sq.m + 19.5sq.m
Apartment 6	Eur170,000 + Eur8,000 CP	2nd Floor	2-Bedroom + Study	98.4sq.m + 6.7sq.m
Apartment 7	Eur160,000 + Eur8,000 CP	3rd Floor	2-Bedroom	85.3sq.m + 5.1sq.m
Apartment 8	SOLD	3rd Floor	3-Bedroom	105.1sq.m + 19.5sq.m
Apartment 9	Eur175,000 + Eur8,000 CP	3rd Floor	3-Bedroom + Study	98.4sq.m + 6.7sq.m
Penthouse 10	SOLD	4th Floor	3-Bedroom	119.0sq.m + 80.8sq.m
Penthouse 11	Eur190,000 + Eur8,000 CP	4th Floor	1-Bedroom + Study	72.5sq.m + 23.5sq.m

TIMEFRAME:

Permit - APPROVED

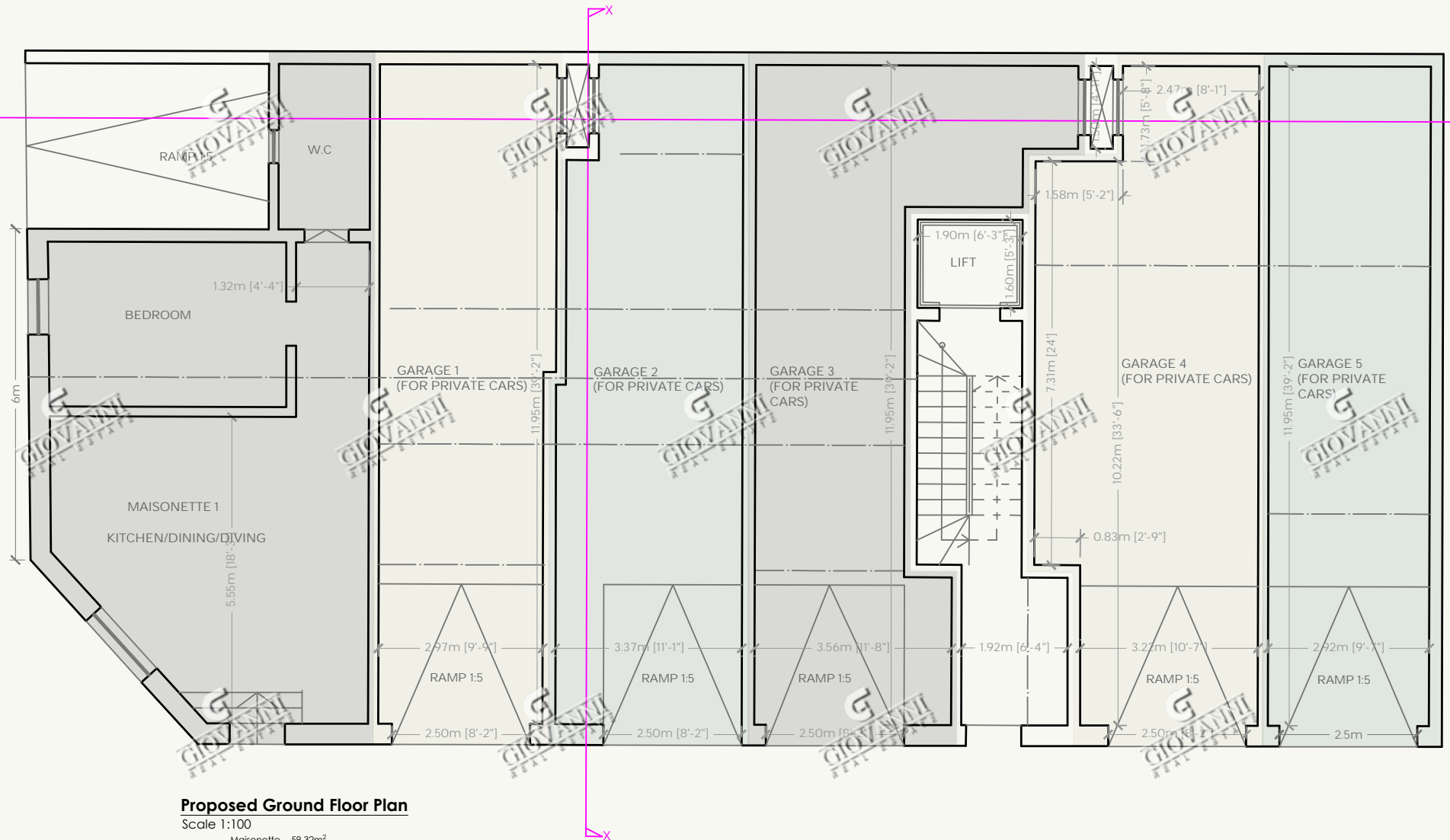
Construction in Shell Form - May 2026

Finishing Packages Available on Request

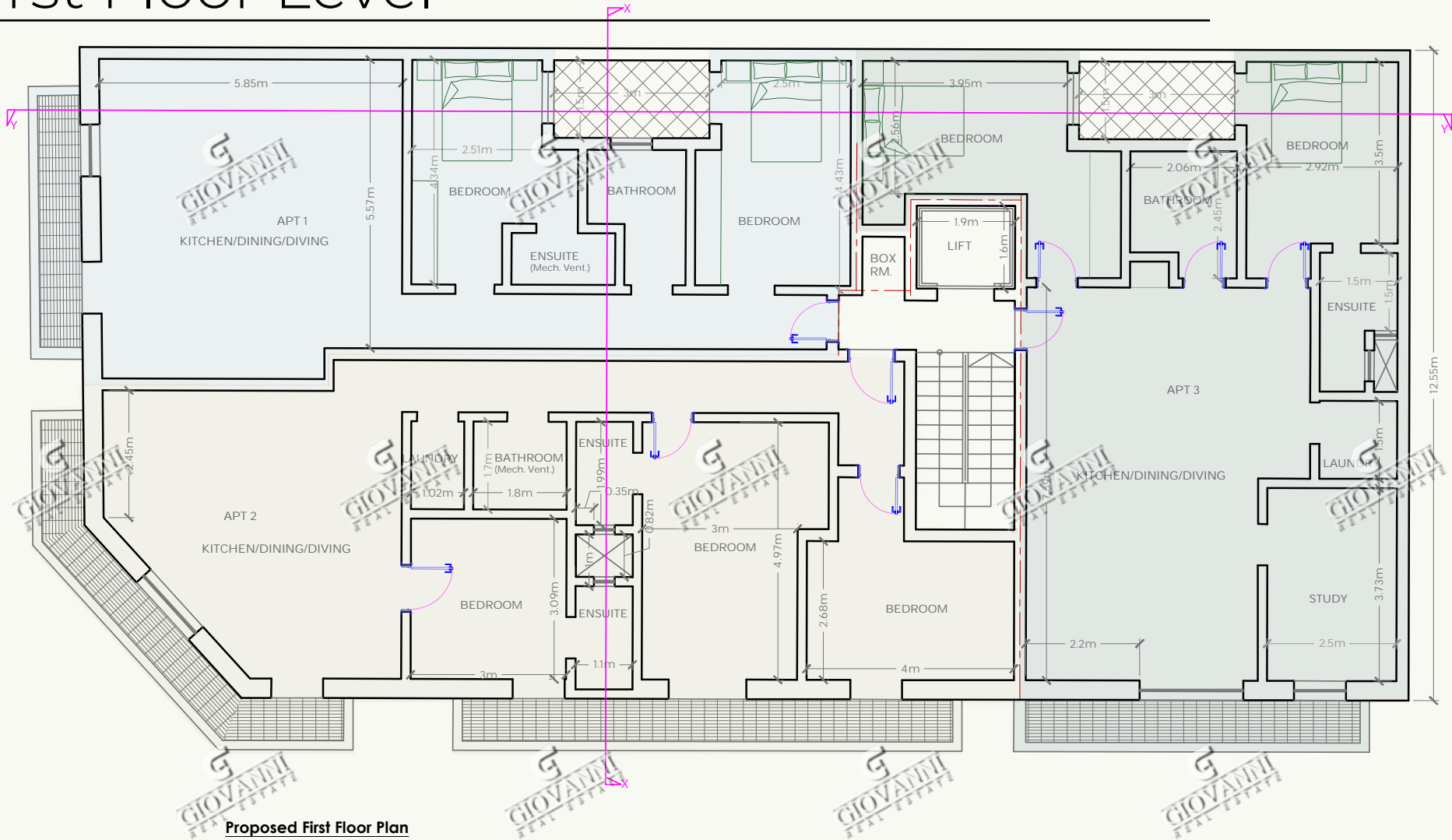


Garage 6	- 2- Car (1 Obstructed)
Garage 7	- 1- Car
Garage 8	- 1- Car
Garage 9	- 2- Car (1 Obstructed)
Garage 10	- 2- Car (Unobstructed)

Street Level Garages (Entrance on Triq Raymond Caruana)



First Floor Level



Proposed First Floor Plan

Scale 1:100

APT 1

- 2 Bedroom
- Gross Internal Floor Area (excl. ext. areas) = 85.85m²
- Gross External Areas = 5.27m²
- Total Floor Area (Gross) =

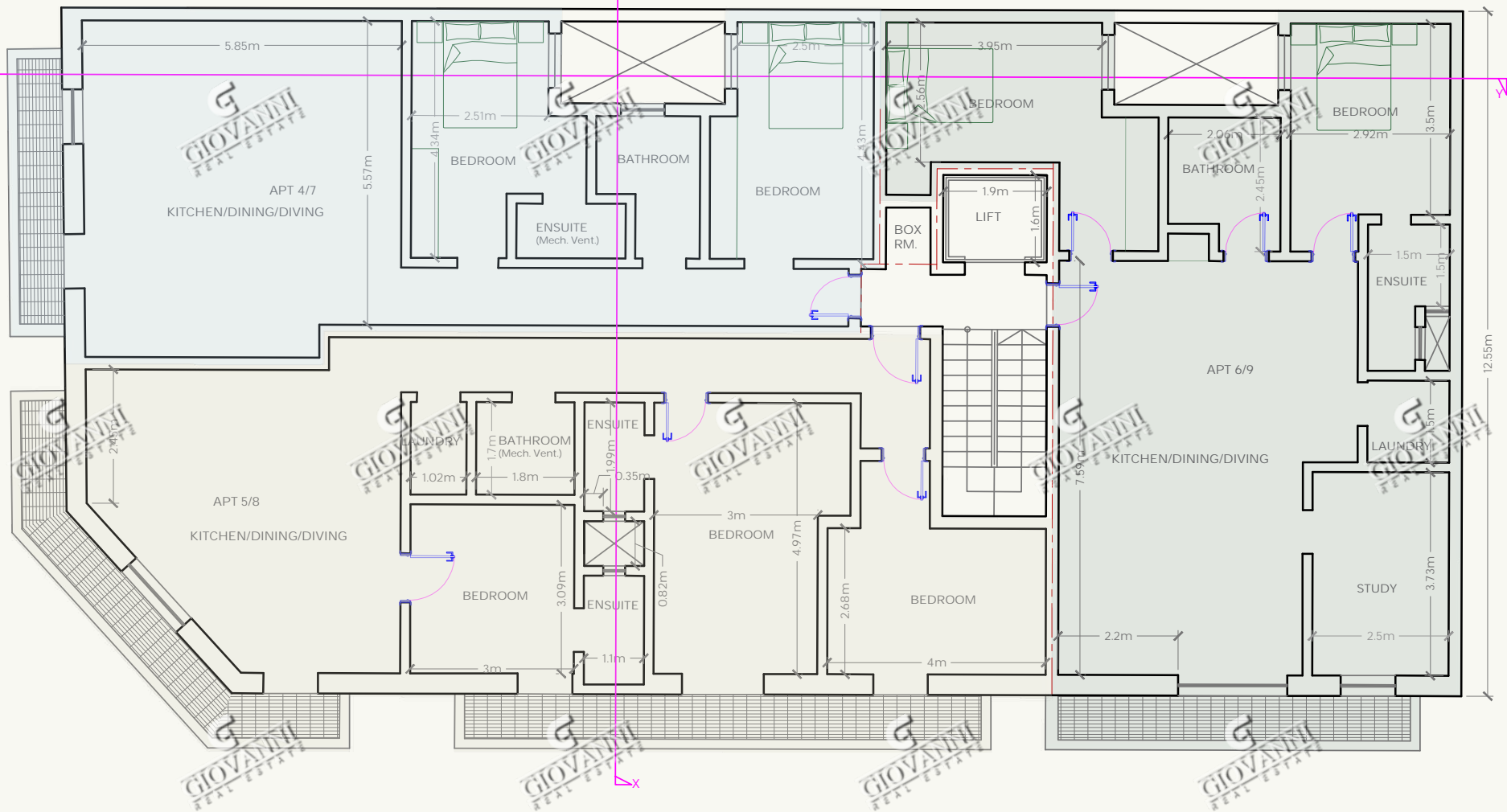
APT 2

- 3 Bedroom
- Gross Internal Floor Area (excl. ext. areas) = 105.27m²
- Gross External Areas = 19.52m²
- Total Floor Area (Gross) =

APT 3

- 2 Bedroom
- Gross Internal Floor Area (excl. ext. areas) = 98.86m²
- Gross External Areas = 6.75m²

Second & Third Floor Levels



Proposed Second/Third Floor Plan

Scale 1:100

APT 4/7

- 2 Bedroom
- Gross Internal Floor Area (excl. ext. areas) = 85.85m²
- Gross External Areas = 5.27m²
- Total Floor Area (Gross) =

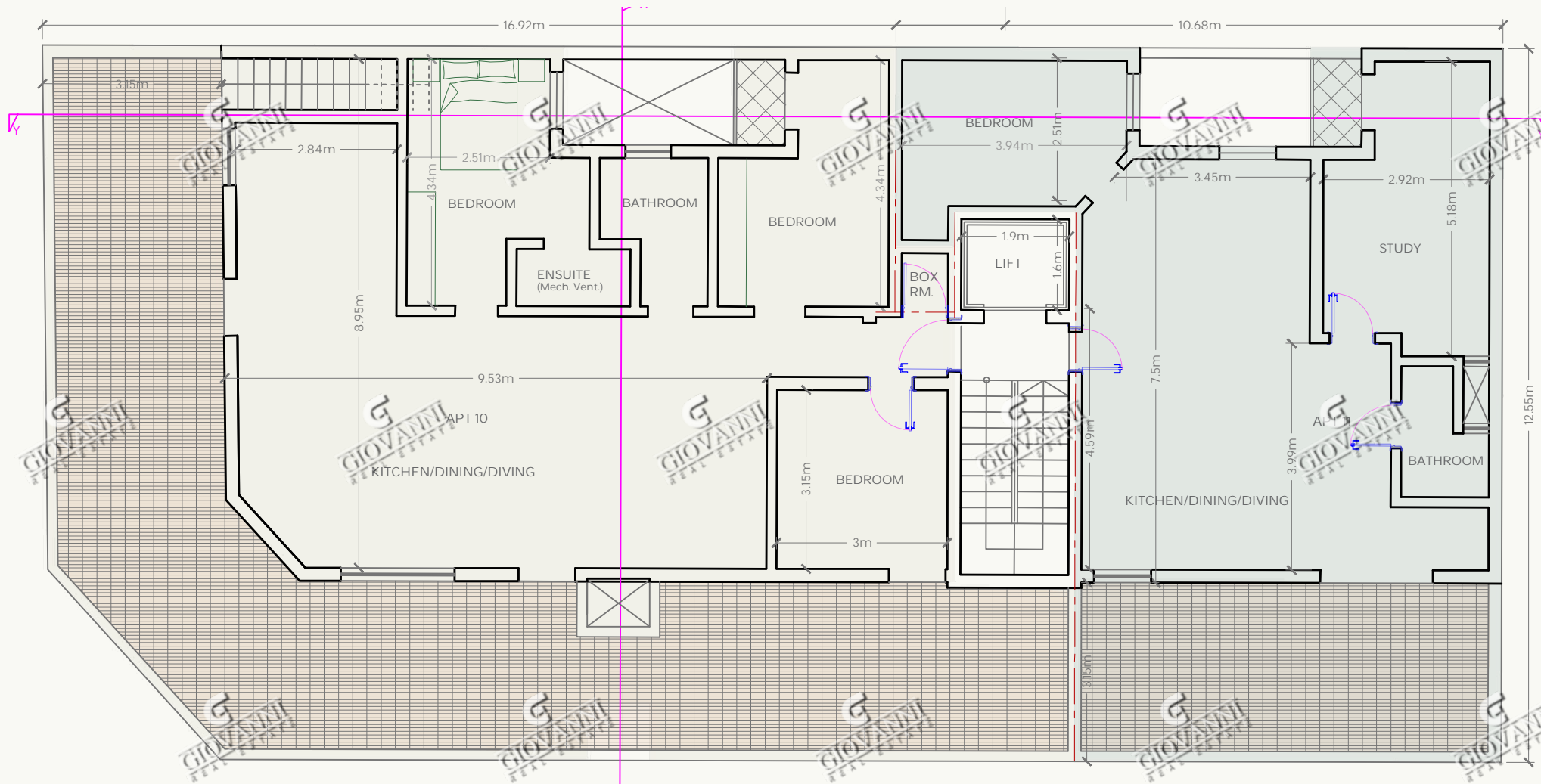
APT 5/8

- 3 Bedroom
- Gross Internal Floor Area (excl. ext. areas) = 105.27m²
- Gross External Areas = 19.52m²
- Total Floor Area (Gross) =

APT 6/9

- 2 Bedroom
- Gross Internal Floor Area (excl. ext. areas) = 98.79m²
- Gross External Areas = 6.75m²

Penthouses



Proposed Receded Floor Plan

Scale 1:100

APT 10

- 3 Bedroom
- Gross Internal Floor Area (excl. ext. areas) = 109.53m²
- Gross External Areas = 81.93m²
- Total Floor Area (Gross) =

APT 11

- 1 Bedroom
- Gross Internal Floor Area (excl. ext. areas) = 72.99m²
- Gross External Areas = 23.54m²

