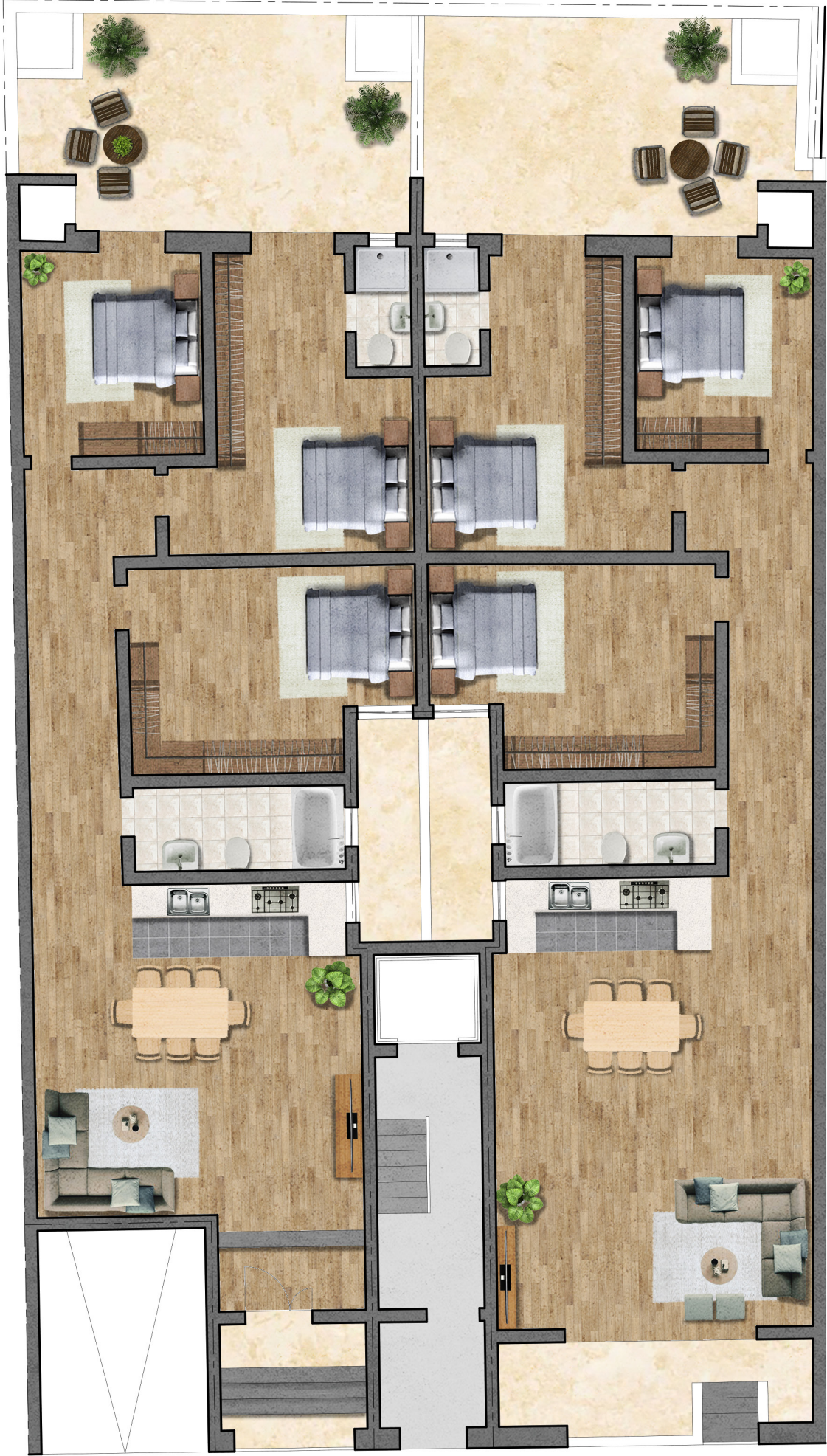
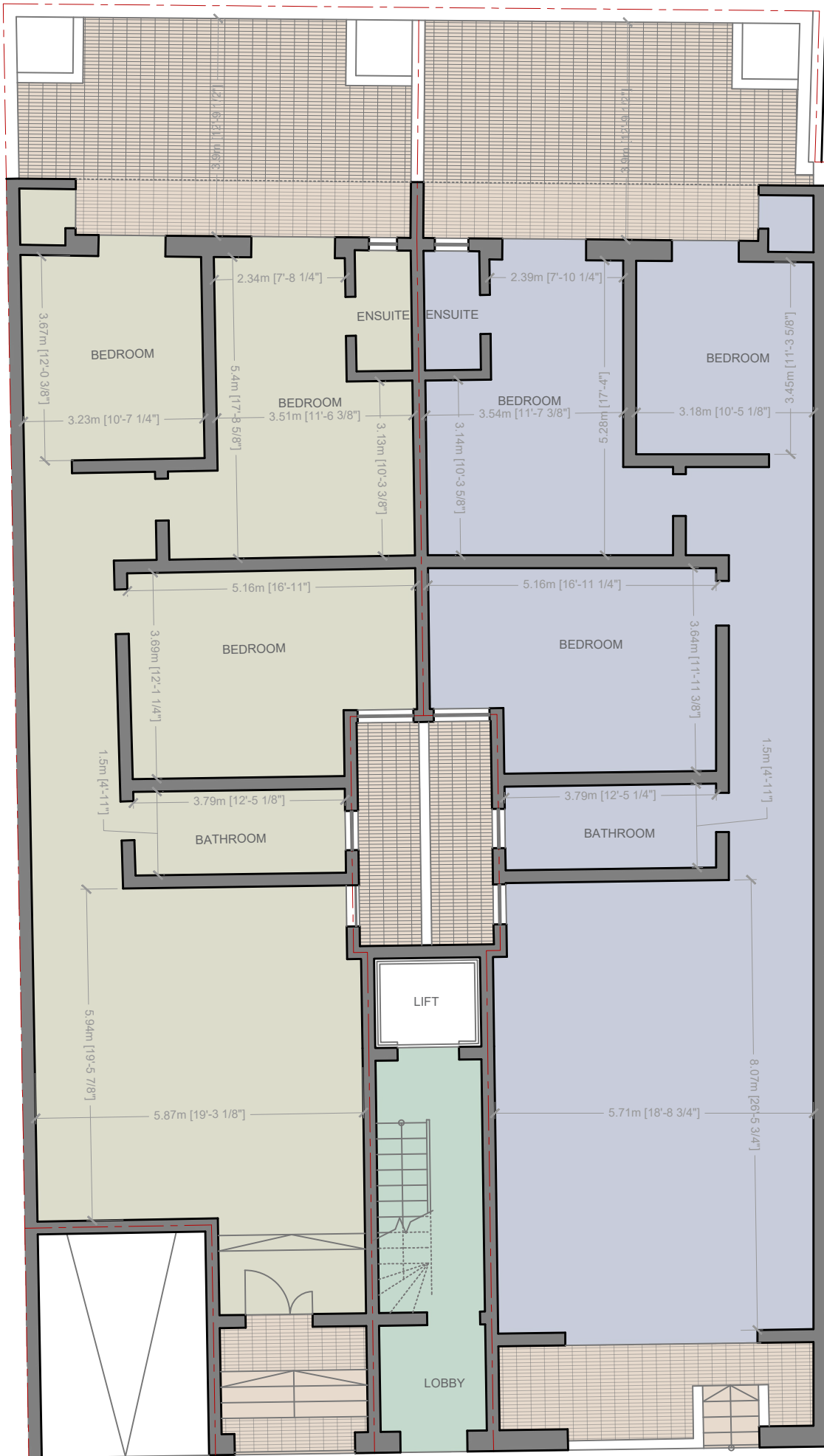


MAISONNETTE 1



MAISONNETTE 2

MAISONNETTE 1



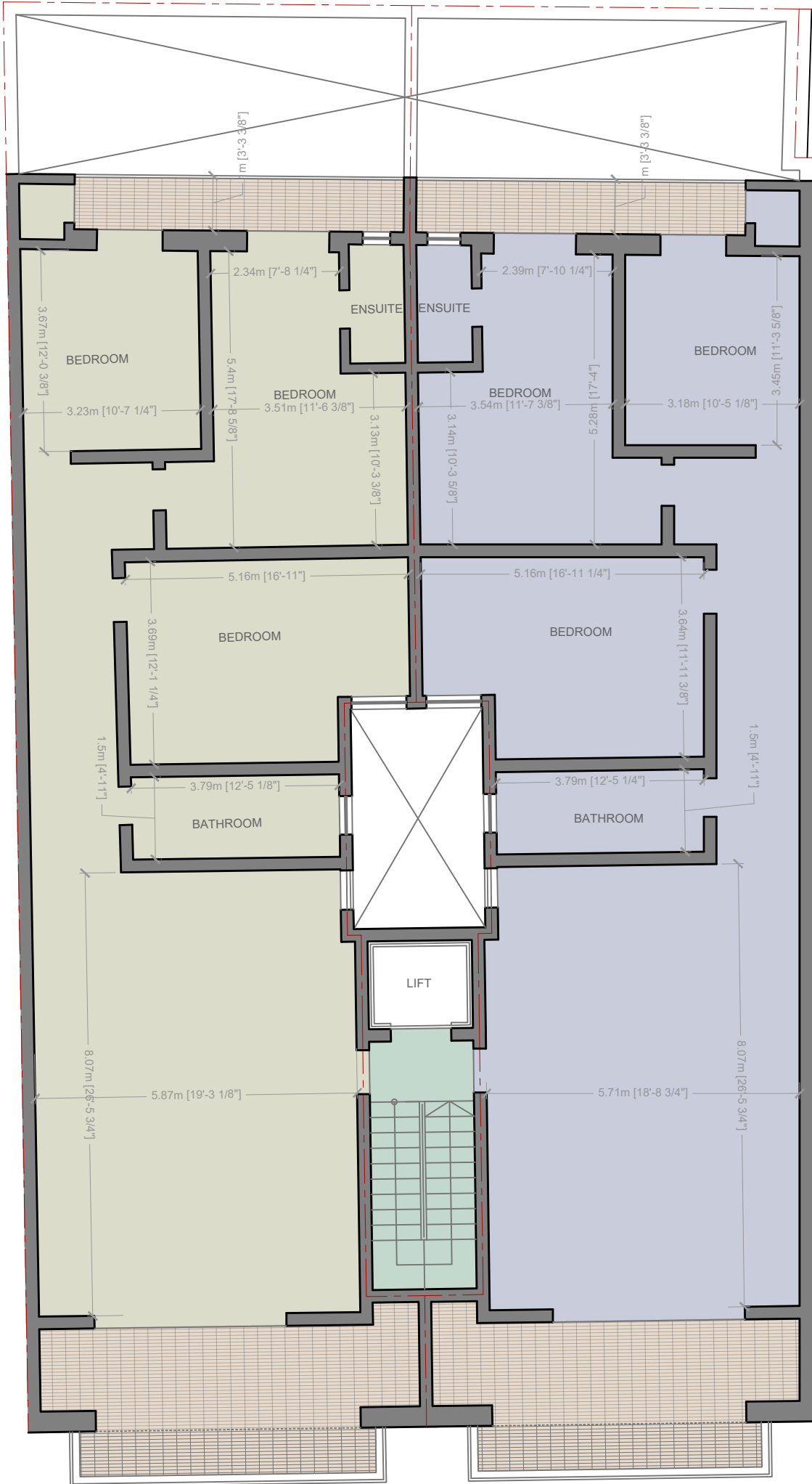
MAISONNETTE 2

APARTMENTS 3/5/7

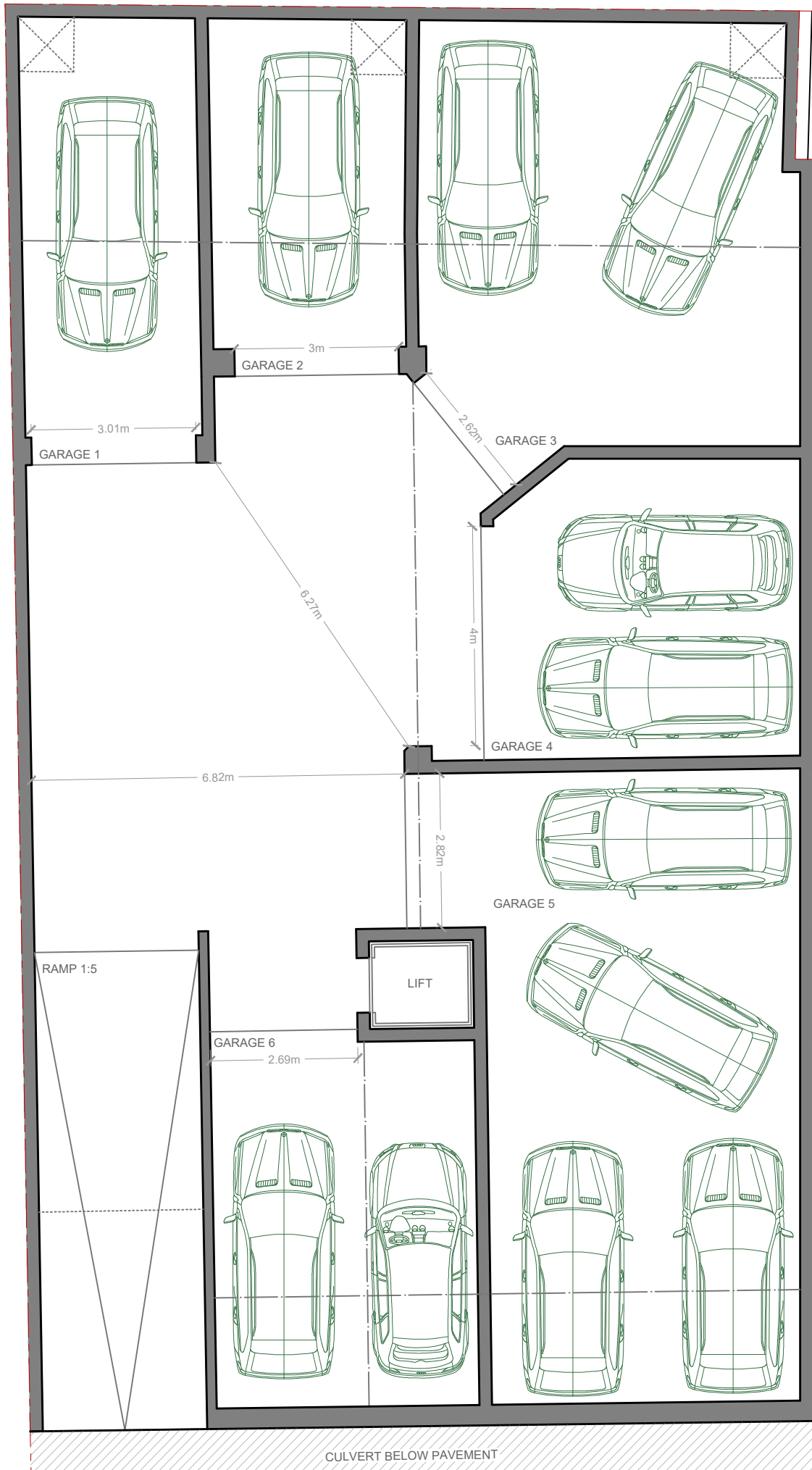


APARTMENTS 4/6/8

APARTMENTS 3/5/7



APARTMENTS 4/6/8



Basement Floor Plan

Scale 1:100

1-Car Garage 2No.

PRICELIST

GARAGES

| | | |
|-----------------|------------------------|--------------|
| GARAGE 1 | EUR30,000 + EUR2000 CP | 1-CAR |
| GARAGE 2 | EUR28,000 + EUR2000 CP | 1-CAR |
| GARAGE 3 | SOLD | 2-CAR |
| GARAGE 4 | EUR40,000 + EUR2000 CP | 2-CAR |
| GARAGE 5 | EUR55,000 + EUR2000 CP | 4-CAR |
| GARAGE 6 | EUR40,000 + EUR2000 CP | 2-CAR |

MAISONNETTES

| | |
|----------------------------|---|
| MAISONNETTE 1 3-BEDROOM | EUR195,000 + EUR2000 CP 124.6sq.m + 34.0sq.m |
| MAISONNETTE 2 3-BEDROOM | EUR215,000 + EUR2000 CP 130.5sq.m + 39.8sq.m |

APARTMENTS

| | |
|--------------------------|---|
| APARTMENT 3 3-BEDROOM | EUR204,000 + EUR6000 CP 133.9sq.m + 22.6sq.m |
| APARTMENT 4 3-BEDROOM | EUR204,000 + EUR6000 CP 130.6sq.m + 22.0sq.m |
| APARTMENT 5 3-BEDROOM | EUR214,000 + EUR6000 CP 133.9sq.m + 22.6sq.m |
| APARTMENT 6 3-BEDROOM | EUR214,000 + EUR6000 CP 130.6sq.m + 22.0sq.m |
| APARTMENT 7 3-BEDROOM | EUR224,000 + EUR6000 CP 133.9sq.m + 22.6sq.m |
| APARTMENT 8 3-BEDROOM | EUR224,000 + EUR6000 CP 130.6sq.m + 22.0sq.m |

| | |
|---------------------------------|--|
| PENTHOUSE 9 3-BEDROOM | SOLD 190.0sq.m + 74.0sq.m |
|---------------------------------|--|