

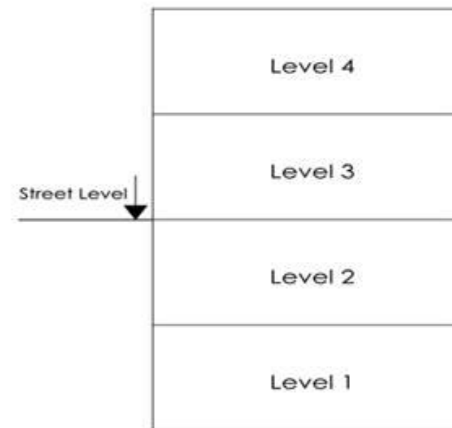
Plot 01
Lower Basement (Level 1)

Artistic Impressions only
Beams may protrude with
minimum headroom of 2.1m

Internal : 106 m² External : 206 m²
Total Area : 312 m² (circa)



SCALE 1:100

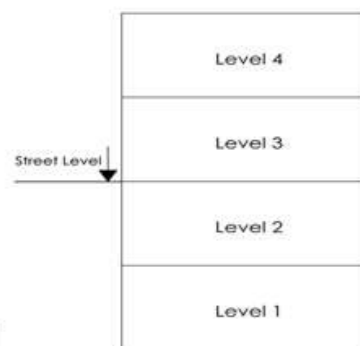
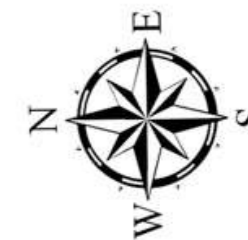


SCALE 1:100

Plot 01
Upper Basement (Level 2)

Artistic Impressions only
Beams may protrude with
minimum headroom of 2.1m

Internal : 103 m² External : 2 m²
Total Area : 105 m² (circa)



10m

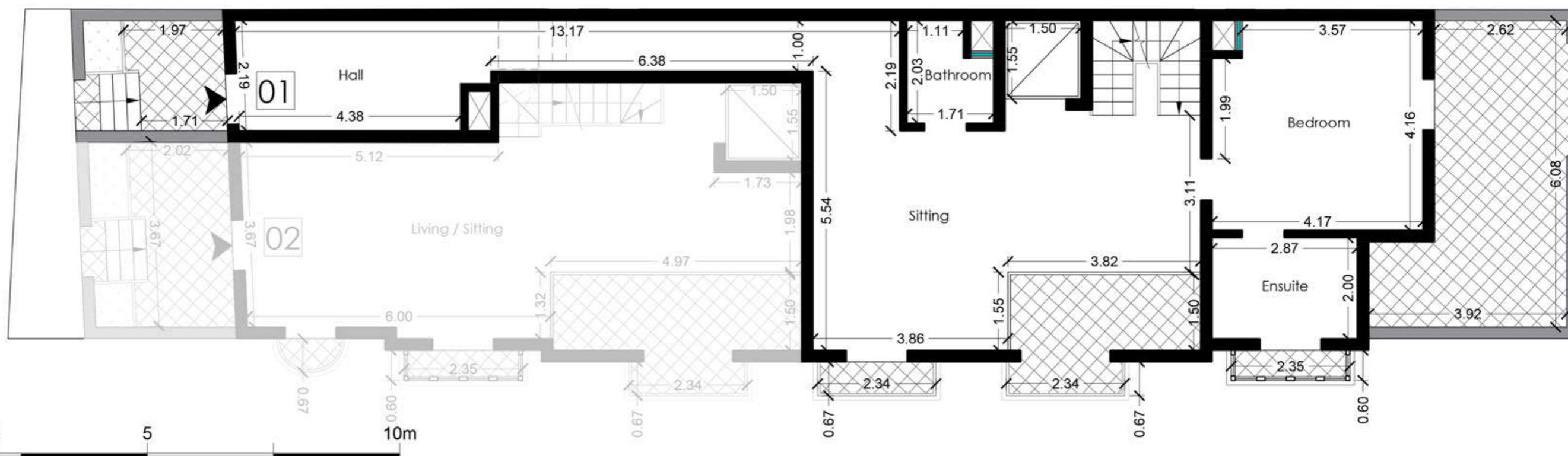
5

2

1

1

SCALE 1 : 100



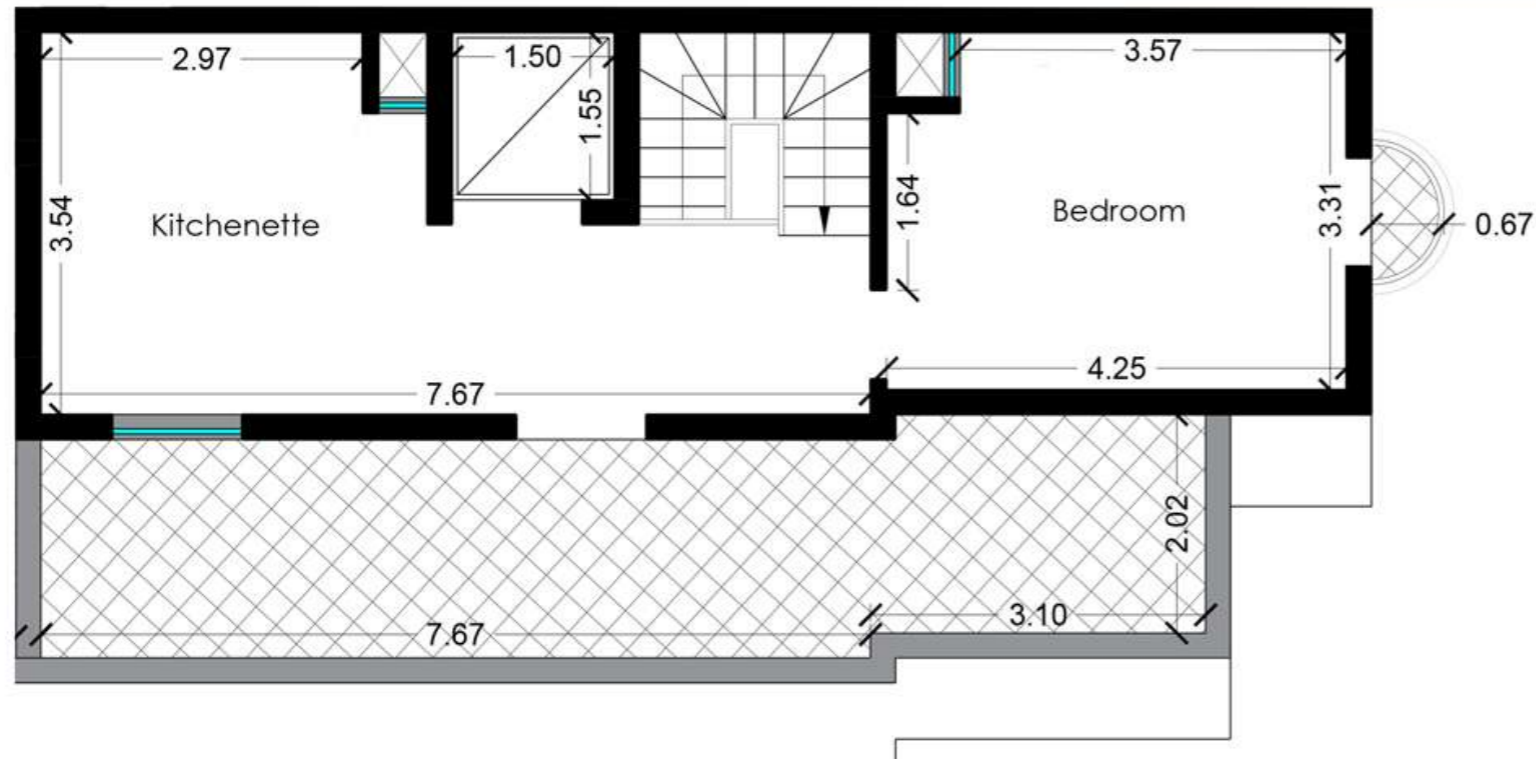
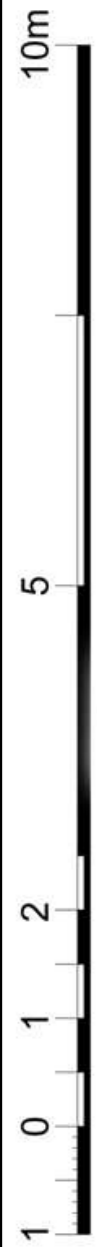
10m

SCALE 1 : 100

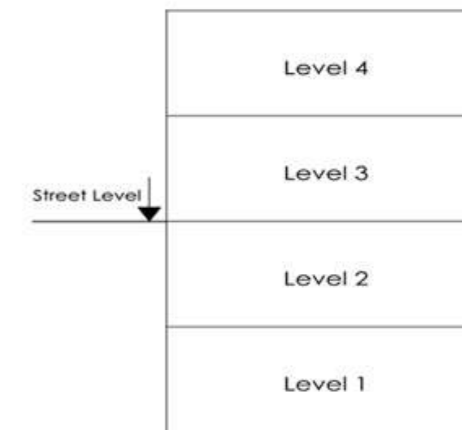
Plot 01
Ground Floor (Level 3)

Artistic Impressions only
Beams may protrude with
minimum headroom of 2.1m

Internal : 97 m² External : 38 m²
Total Area : 135 m² (circa)



SCALE 1 : 100



SCALE 1 : 100

Plot 01
First Floor (Level 4)

Artistic Impressions only
Beams may protrude with
minimum headroom of 2.1m

Internal : 47 m² External : 25 m²
Total Area : 72 m² (circa)