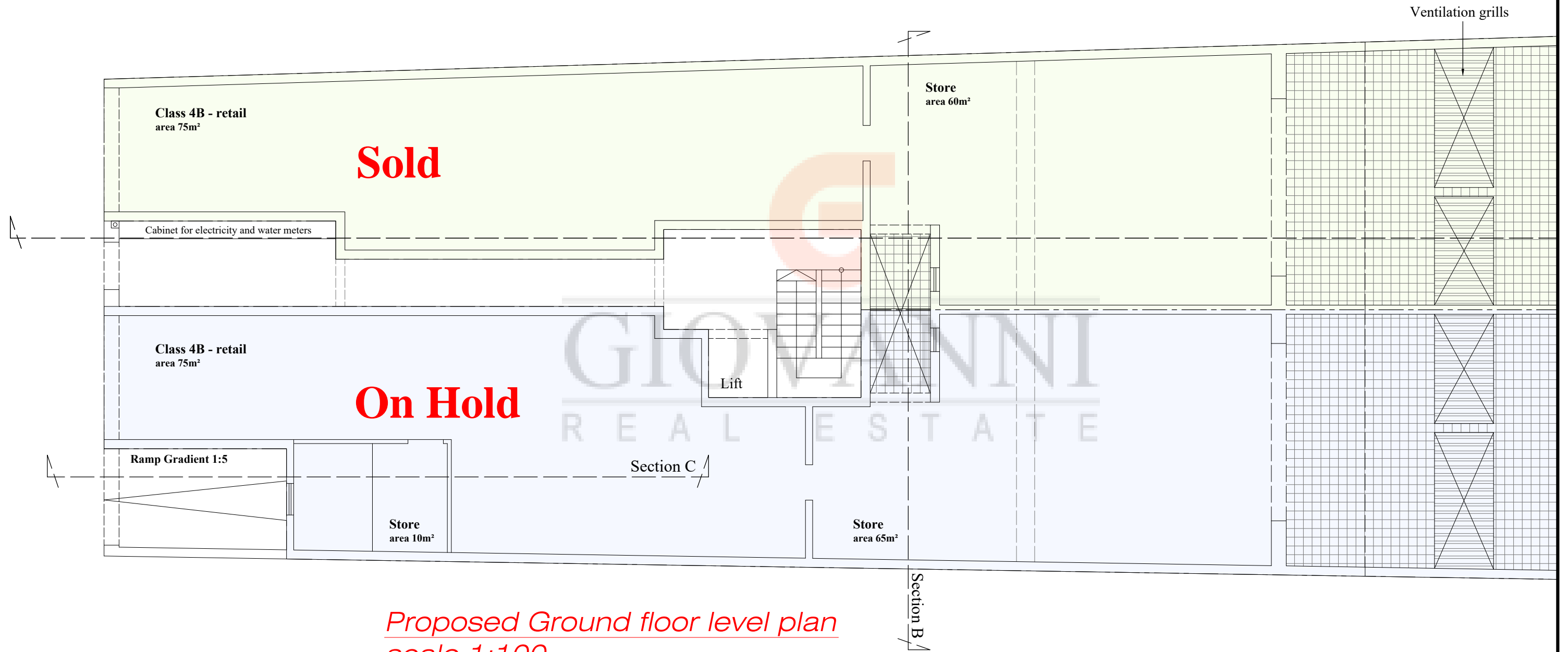
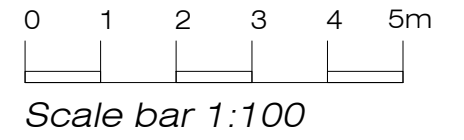
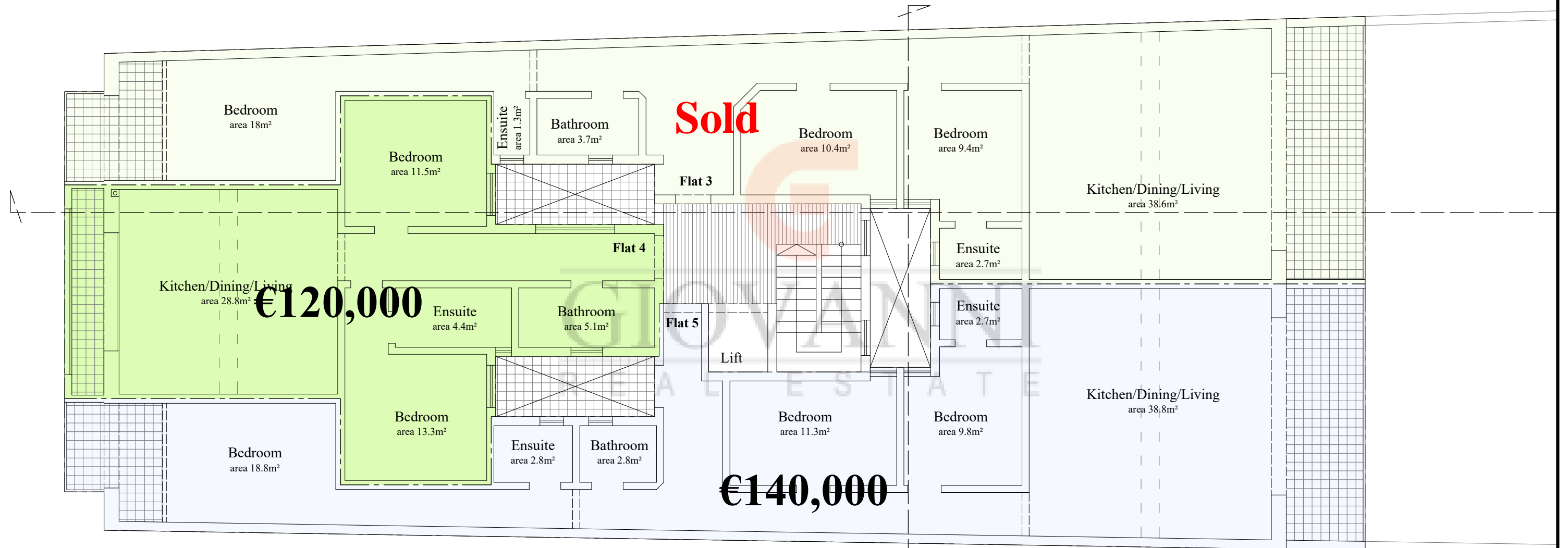
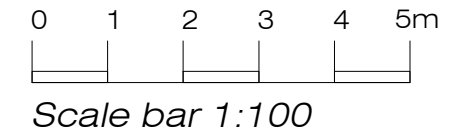


*Proposed Basement level plan  
scale 1:100*



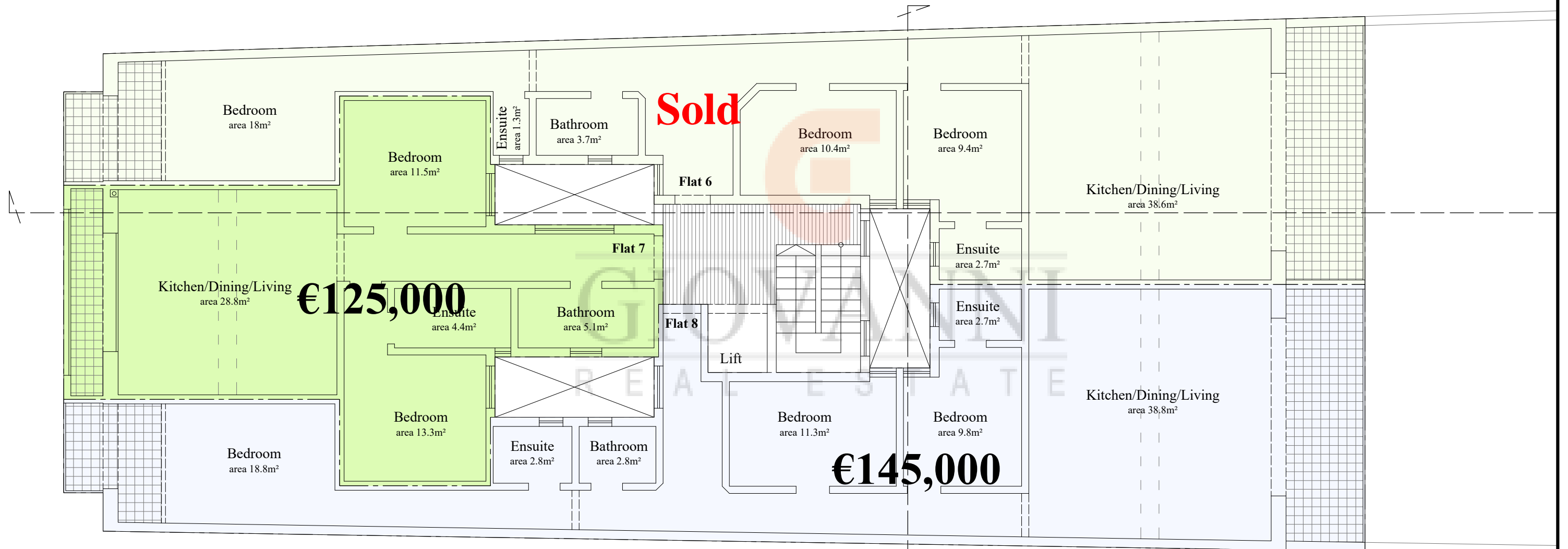
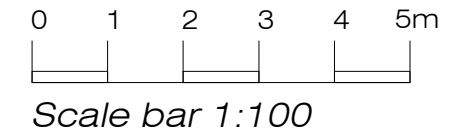
*Proposed Ground floor level plan  
scale 1:100*





- Flat 3 - Gross floor area 144m<sup>2</sup>  
Internal area 124m<sup>2</sup>
- Flat 4 - Gross floor area 90m<sup>2</sup>  
Internal area 85m<sup>2</sup>
- Flat 5 - Gross floor area 144m<sup>2</sup>  
Internal area 124m<sup>2</sup>

*Proposed First floor level plan  
scale 1:100*

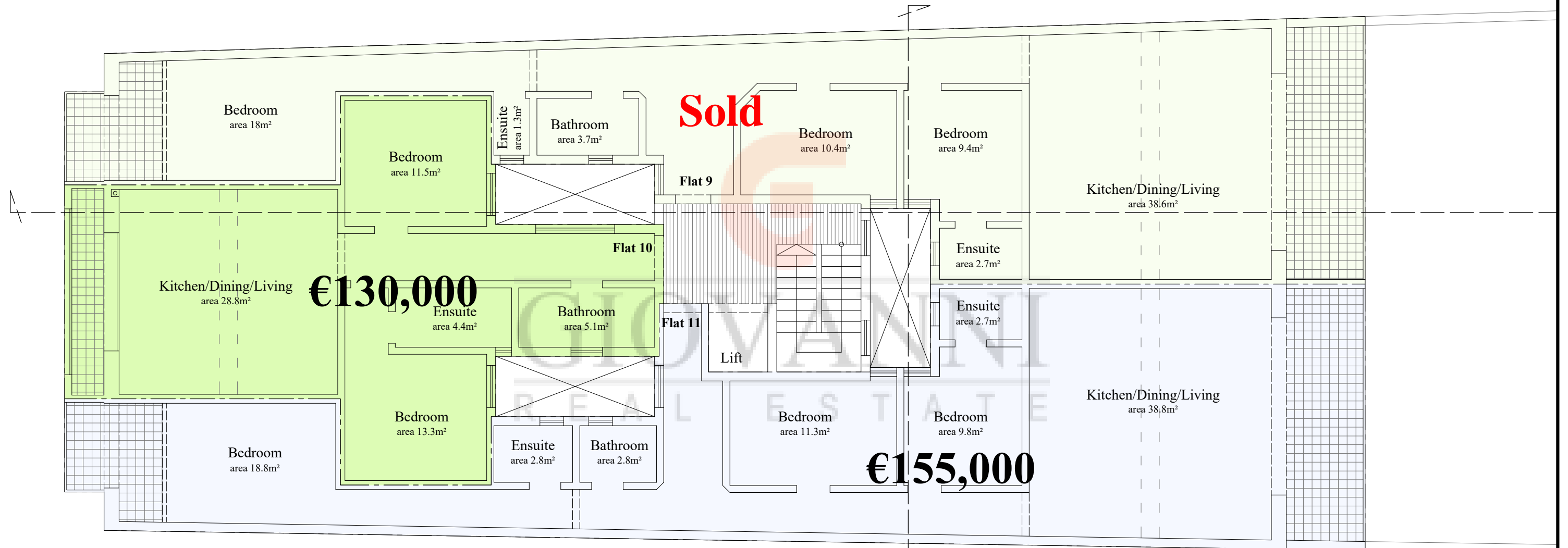
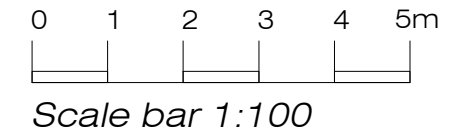


- Flat 6 - Gross floor area 144m<sup>2</sup>  
Internal area 124m<sup>2</sup>
- Flat 7 - Gross floor area 90m<sup>2</sup>  
Internal area 85m<sup>2</sup>
- Flat 8 - Gross floor area 144m<sup>2</sup>  
Internal area 124m<sup>2</sup>

*Proposed Second floor level plan  
scale 1:100*

Section B

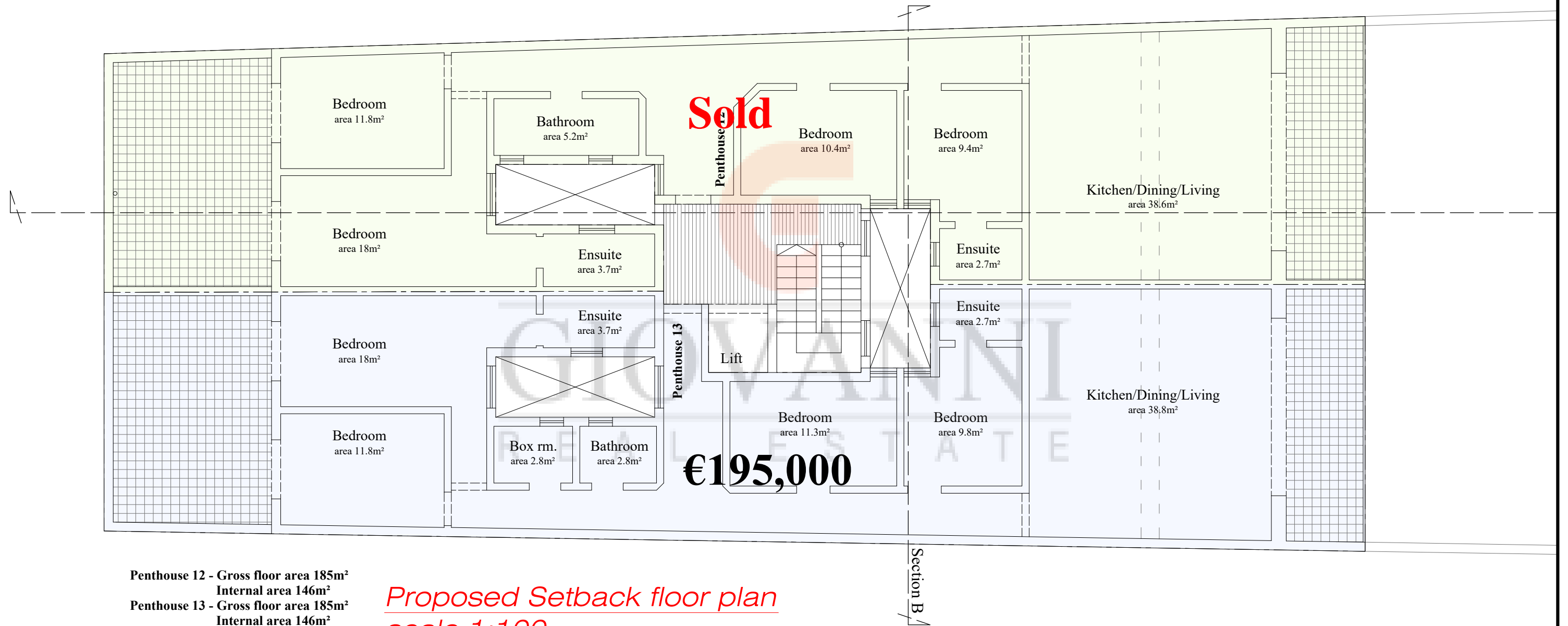
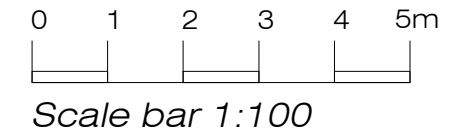




- Flat 9 - Gross floor area 144m<sup>2</sup>  
Internal area 124m<sup>2</sup>
- Flat 10 - Gross floor area 90m<sup>2</sup>  
Internal area 85m<sup>2</sup>
- Flat 11 - Gross floor area 144m<sup>2</sup>  
Internal area 124m<sup>2</sup>

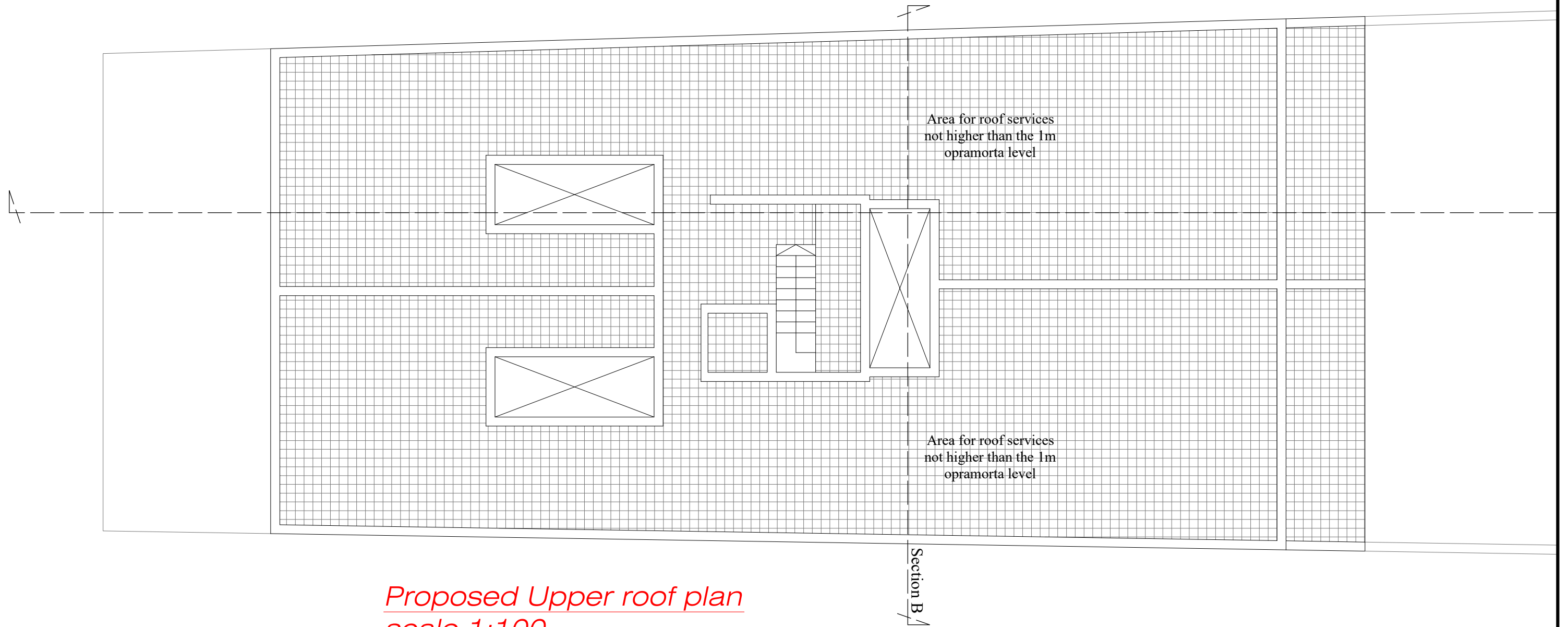
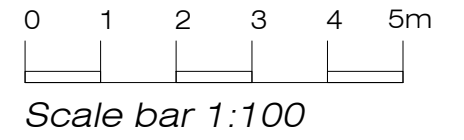
*Proposed Third floor level plan  
scale 1:100*

Section B



Penthouse 12 - Gross floor area 185m<sup>2</sup>  
Internal area 146m<sup>2</sup>  
Penthouse 13 - Gross floor area 185m<sup>2</sup>  
Internal area 146m<sup>2</sup>

*Proposed Setback floor plan  
scale 1:100*



*Proposed Upper roof plan  
scale 1:100*

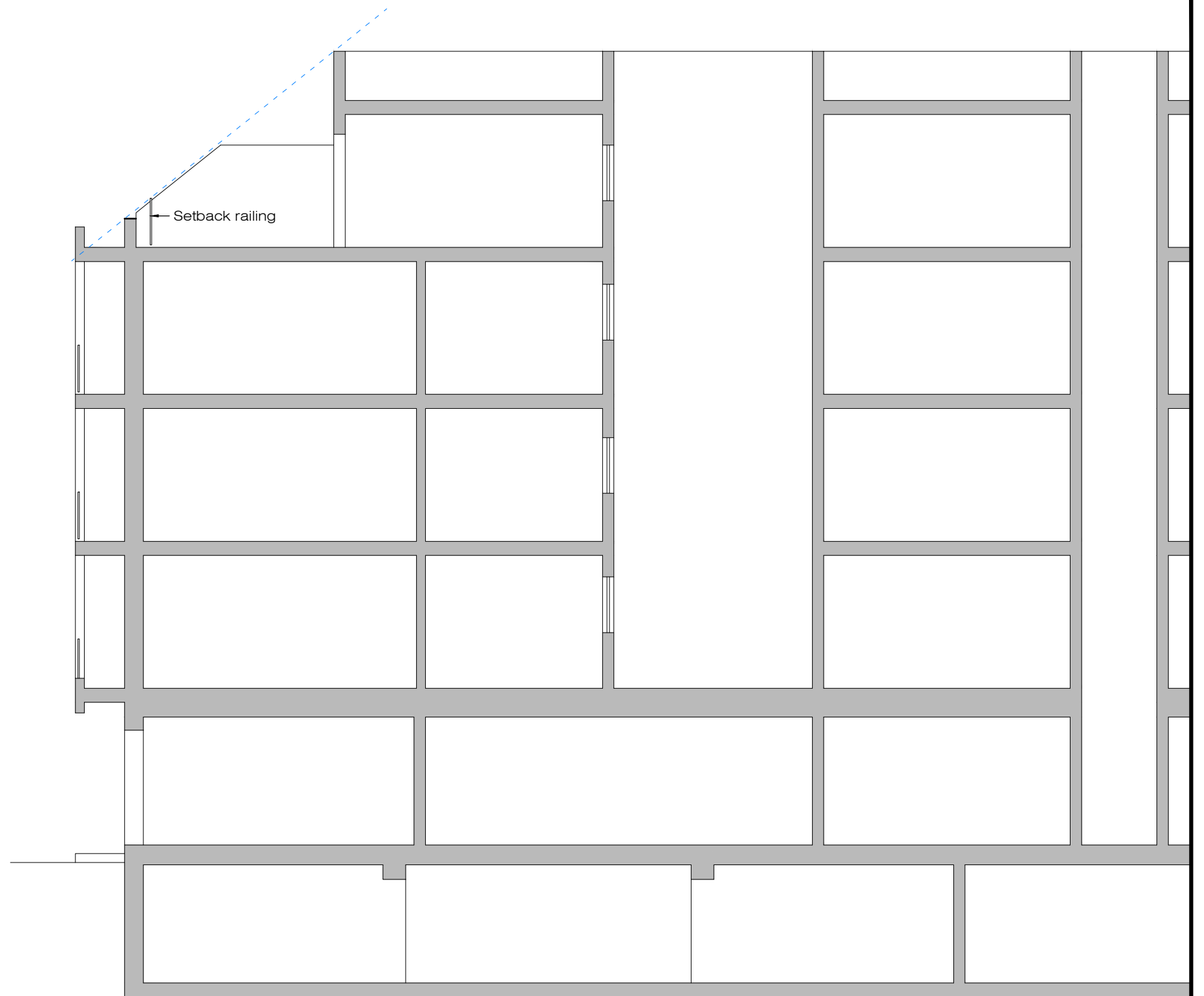


0 1 2 3 4 5m  
Scale bar 1:100



Facade Materials:  
Franka blockwork unrendered & unpainted  
Beige Rendering  
White aluminium railing  
Apertures in white aluminium/PVC  
Garage door in white PVC

*Proposed Front elevation  
scale 1:100*



*Proposed Section A  
scale 1:100*

### **Garages**

Garage 1 – **SOLD**

Garage 2 – **SOLD**

Garage 3 – **SOLD**

Garage 4 – **SOLD**

Garage 5 – €26,000

Garage 6 – €28,000

Garage 7 – €26,000

Garage 8 – €26,000

Garage 9 – **SOLD**

Garage 10 – **SOLD**

Garage 11 – €30,000 – **ON HOLD**

Garage 12 – €32,000 – **ON HOLD**

### **Ground Floor Level**

Commercial Shop 1 – **SOLD**

Commercial Shop 2 – **ON HOLD**

### **Apartments @ First Floor level**

Apartment 3 – **SOLD**

Apartment 4 – 2 bed 2 bath - €120,000+ €5,000 Common Parts

Apartment 5 – 3 bed 3 bath - €140,000+ €5,000 Common Parts

### **Apartments @ Second Floor level**

Apartment 6 – **SOLD**

Apartment 7 – 2 bed 2 bath - €125,000+ €5,000 Common Parts

Apartment 8 – 3 bed 3 bath - €145,000+ €5,000 Common Parts

**Apartments @ Third Floor level**

Apartment 9 – **SOLD**

Apartment 10 – 2 bed 2 bath - €130,000+ €5,000 Common Parts

Apartment 11 – 3 bed 3 bath - €155,000+ €5,000 Common Parts

**Penthouses @ Setback floor level**

Penthouse 12 – **SOLD**

Penthouse 13 – 4 bed 3 bath - €195,000 + €5,000 Common Parts

Construction to Start January 2023

Construction to be completed by December 2023

Common parts to be completed by June 2024