

| Block | Door no.    | Internal Area | External Area |      |           | Int+Front   |
|-------|-------------|---------------|---------------|------|-----------|-------------|
|       |             |               | Front         | Back | Int+Front |             |
| H     | Apartment 1 | 116 s.m.      | -             | -    | -         | 116 s.m.    |
| H     | Apartment 2 | 101.45 s.m.   | -             | -    | -         | 101.45 s.m. |
| G     | Apartment 1 | 90.47 s.m.    | -             | -    | -         | 90.47 s.m.  |
| G     | Apartment 2 | 104.73 s.m.   | -             | -    | -         | 104.73 s.m. |
| F     | Apartment 1 | 98.20 s.m.    | -             | -    | -         | 98.20 s.m.  |
| F     | Apartment 2 | 105.49 s.m.   | -             | -    | -         | 105.49 s.m. |



Proposed Ground Floor

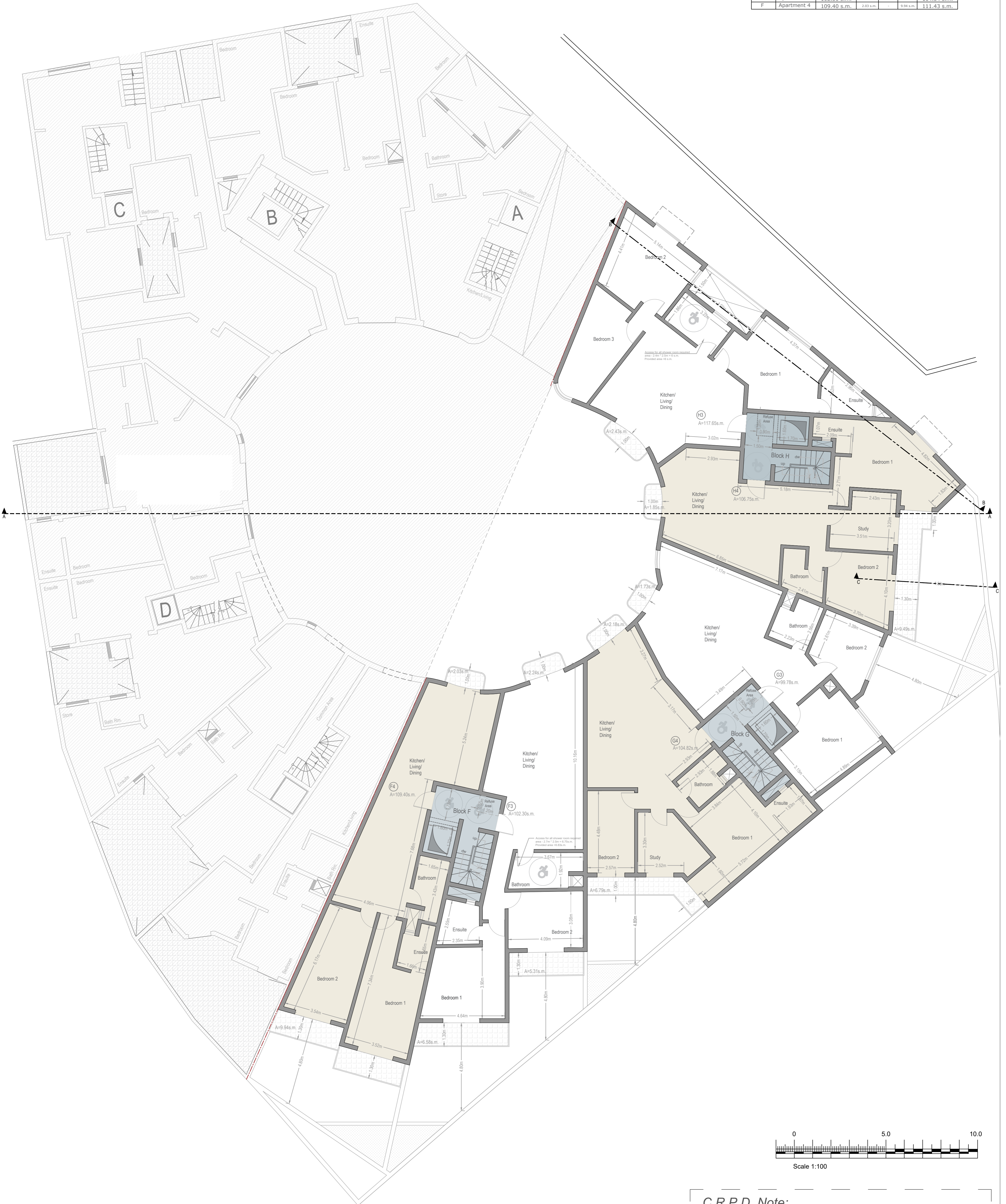
**C.R.P.D. Note:**

- ALL LINES THAT MAY BE INDICATING STEPS FOR ACCESS FOR ALL ARE < 15mm THRESHOLD;
- EXTERNAL SURFACES ARE NON-SLIP

- Green - As Approved But Not Constructed
- Blue - As Actually Constructed
- Yellow - To be Demolished
- Red - Proposed for Construction



| Block  | Door no.    | Internal Area | External Area |        |            | Int+Front   |
|--------|-------------|---------------|---------------|--------|------------|-------------|
|        |             |               | Front         | Front  | Back       |             |
| (sq.m) | (sq.m)      | (sq.m)        | (sq.m)        | (sq.m) | (sq.m)     | (sq.m)      |
| H      | Apartment 3 | 117.65 s.m.   | 2.43 s.m.     | -      | -          | 120.08 s.m. |
| H      | Apartment 4 | 106.75 s.m.   | 1.85 s.m.     | -      | 9.49 s.m.  | 108.60 s.m. |
| G      | Apartment 3 | 99.78 s.m.    | 1.79 s.m.     | -      | -          | 101.51 s.m. |
| G      | Apartment 4 | 104.82 s.m.   | 2.18 s.m.     | -      | 6.79 s.m.  | 107 s.m.    |
| F      | Apartment 3 | 102.30 s.m.   | 2.24 s.m.     | -      | 11.89 s.m. | 104.54 s.m. |
| F      | Apartment 4 | 109.40 s.m.   | 2.93 s.m.     | -      | 9.84 s.m.  | 111.43 s.m. |



Proposed First Floor

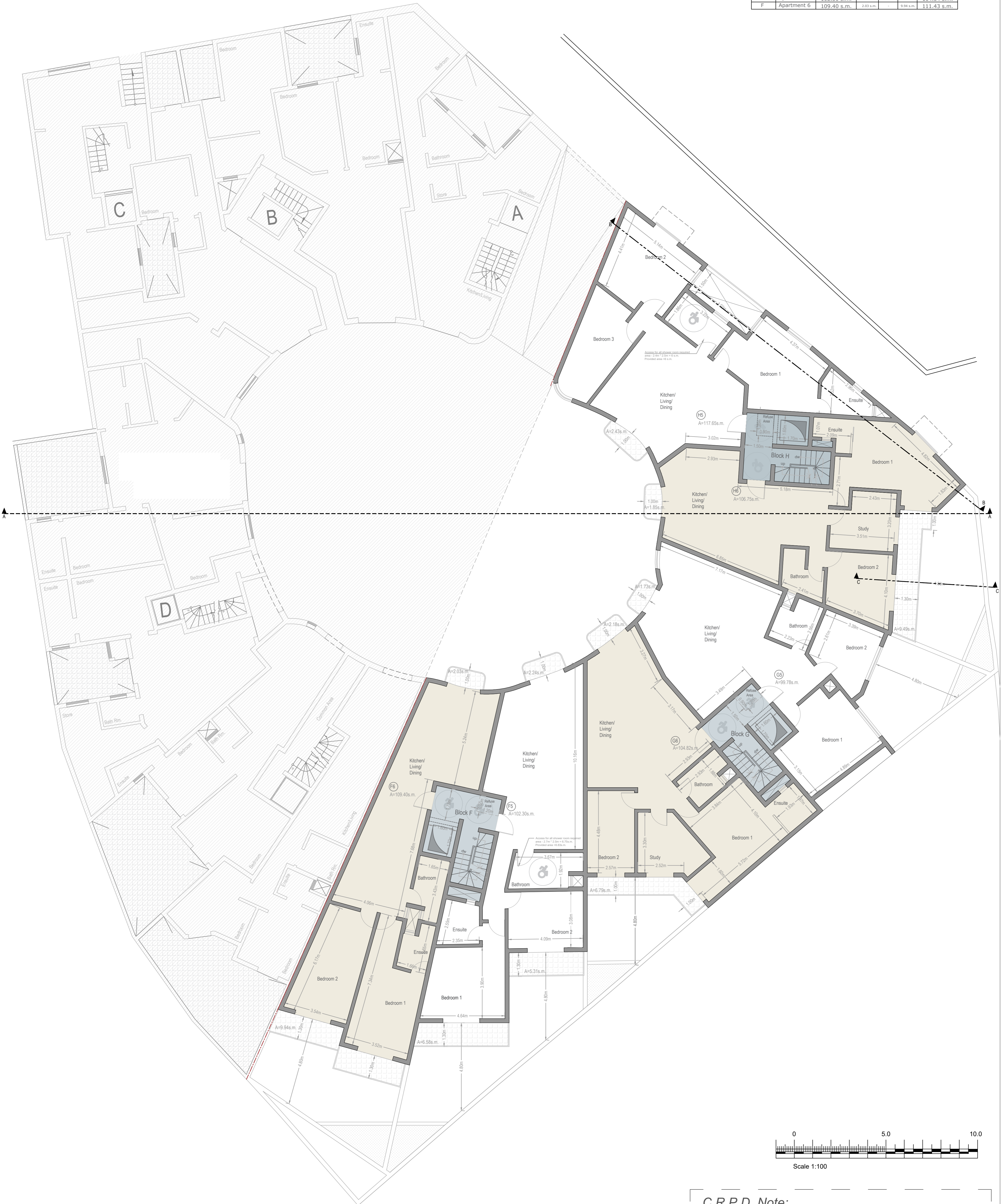
**C.R.P.D. Note:**

- ALL LINES THAT MAY BE INDICATING STEPS FOR ACCESS FOR ALL ARE < 15mm THRESHOLD;
- EXTERNAL SURFACES ARE NON-SLIP

- Green - As Approved But Not Constructed
- Blue - As Actually Constructed
- Yellow - To be Demolished
- Red - Proposed for Construction



| Block  | Door no.    | Internal Area | External Area |           |            | Int+Front   |
|--------|-------------|---------------|---------------|-----------|------------|-------------|
|        |             |               | Front         | Front     | Back       |             |
| (sq.m) | (sq.m)      | (sq.m)        | (sq.m)        | (sq.m)    | (sq.m)     | (sq.m)      |
| H      | Apartment 5 | 117.66 s.m.   | 2.43 s.m.     | 2.18 s.m. | -          | 122.27 s.m. |
| H      | Apartment 6 | 106.74 s.m.   | 1.85 s.m.     | 2.18 s.m. | 9.49 s.m.  | 110.77 s.m. |
| G      | Apartment 5 | 99.78 s.m.    | 1.79 s.m.     | -         | -          | 101.51 s.m. |
| G      | Apartment 6 | 104.82 s.m.   | 2.18 s.m.     | -         | 6.79 s.m.  | 107 s.m.    |
| F      | Apartment 5 | 102.30 s.m.   | 2.24 s.m.     | -         | 11.89 s.m. | 104.54 s.m. |
| F      | Apartment 6 | 109.40 s.m.   | 2.93 s.m.     | -         | 9.84 s.m.  | 111.43 s.m. |



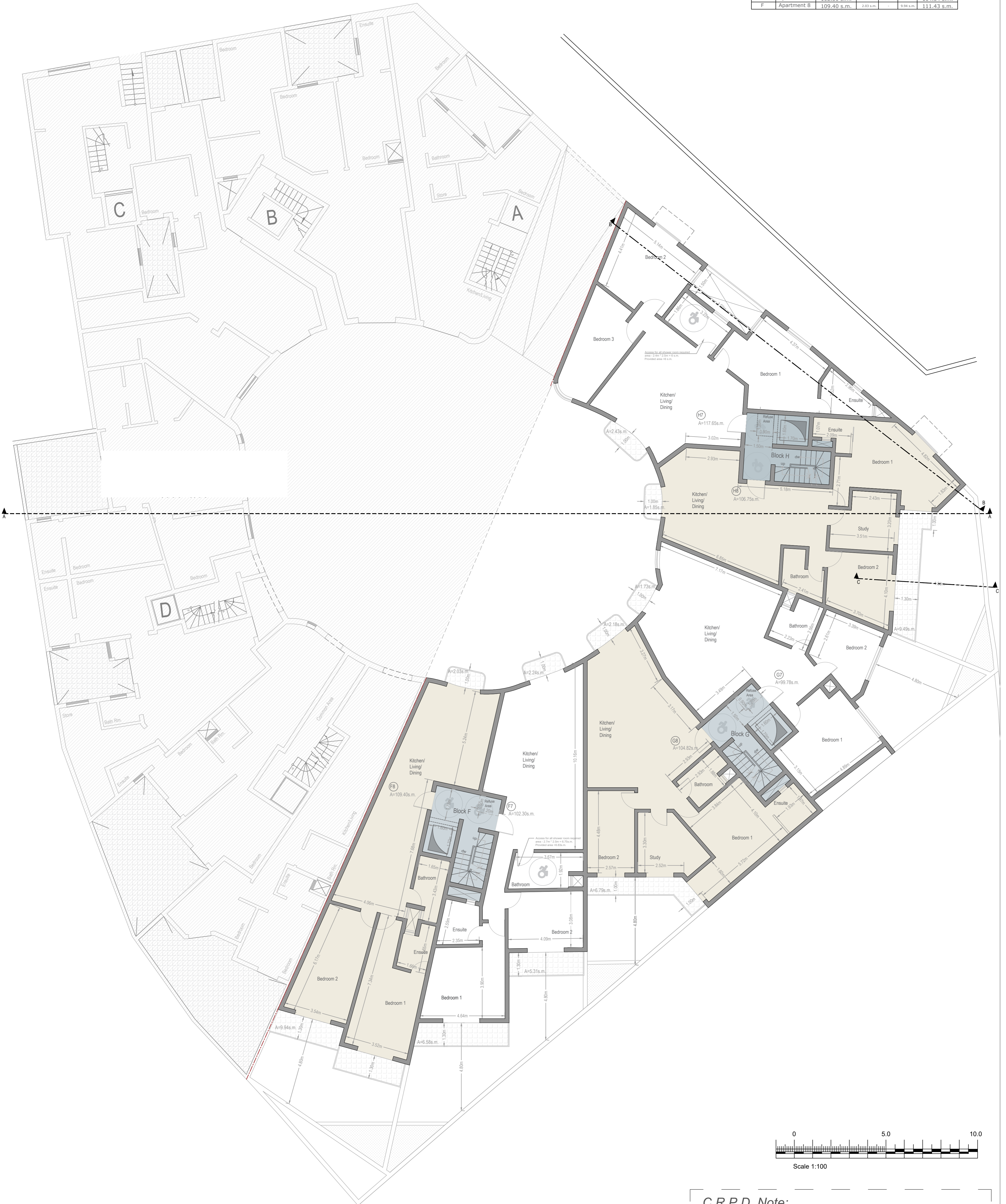
Proposed Second Floor

**C.R.P.D. Note:**

- ALL LINES THAT MAY BE INDICATING STEPS FOR ACCESS FOR ALL ARE < 15mm THRESHOLD;
- EXTERNAL SURFACES ARE NON-SLIP



| Block  | Door no.    | Internal Area | External Area |           |            | Int+Front   |
|--------|-------------|---------------|---------------|-----------|------------|-------------|
|        |             |               | Front         | Front     | Back       |             |
| (sq.m) | (sq.m)      | (sq.m)        | (sq.m)        | (sq.m)    | (sq.m)     | (sq.m)      |
| H      | Apartment 7 | 117.66 s.m.   | 2.43 s.m.     | 2.18 s.m. | -          | 122.27 s.m. |
| H      | Apartment 8 | 106.74 s.m.   | 1.85 s.m.     | 2.18 s.m. | 9.49 s.m.  | 110.77 s.m. |
| G      | Apartment 7 | 99.78 s.m.    | 1.79 s.m.     | -         | -          | 101.51 s.m. |
| G      | Apartment 8 | 104.82 s.m.   | 2.18 s.m.     | -         | 6.79 s.m.  | 107 s.m.    |
| F      | Apartment 7 | 102.30 s.m.   | 2.24 s.m.     | -         | 11.89 s.m. | 104.54 s.m. |
| F      | Apartment 8 | 109.40 s.m.   | 2.03 s.m.     | -         | 9.84 s.m.  | 111.43 s.m. |



Proposed Third Floor

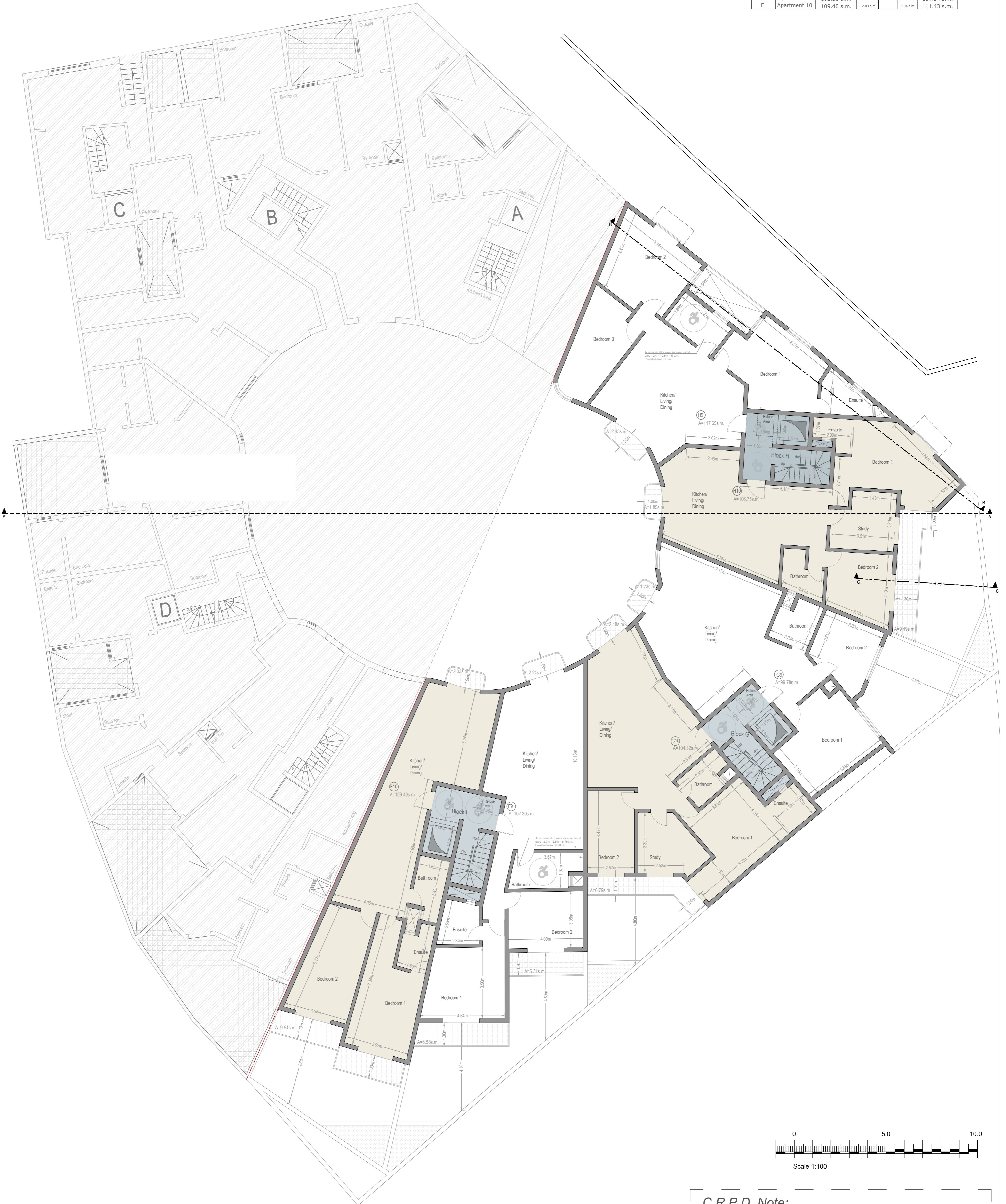
**C.R.P.D. Note:**

- ALL LINES THAT MAY BE INDICATING STEPS FOR ACCESS FOR ALL ARE < 15mm THRESHOLD;
- EXTERNAL SURFACES ARE NON-SLIP

|        |                                   |
|--------|-----------------------------------|
| Green  | - As Approved But Not Constructed |
| Blue   | - As Actually Constructed         |
| Yellow | - To be Demolished                |
| Red    | - Proposed for Construction       |



| Block | Door no.     | Internal Area | External Area |           |            | Int+Front   |
|-------|--------------|---------------|---------------|-----------|------------|-------------|
|       |              |               | Front         | Front     | Back       |             |
| H     | Apartment 9  | 117.66 s.m.   | 2.43 s.m.     | 2.18 s.m. | -          | 122.27 s.m. |
| H     | Apartment 10 | 106.74 s.m.   | 1.85 s.m.     | 2.18 s.m. | 9.49 s.m.  | 110.77 s.m. |
| G     | Apartment 9  | 99.78 s.m.    | 1.79 s.m.     | -         | -          | 101.51 s.m. |
| G     | Apartment 10 | 104.82 s.m.   | 2.18 s.m.     | -         | 6.79 s.m.  | 107 s.m.    |
| F     | Apartment 9  | 102.30 s.m.   | 2.24 s.m.     | -         | 11.89 s.m. | 104.54 s.m. |
| F     | Apartment 10 | 109.40 s.m.   | 2.93 s.m.     | -         | 9.84 s.m.  | 111.43 s.m. |



Proposed Fourth Floor

**C.R.P.D. Note:**

- ALL LINES THAT MAY BE INDICATING STEPS FOR ACCESS FOR ALL ARE < 15mm THRESHOLD;
- EXTERNAL SURFACES ARE NON-SLIP

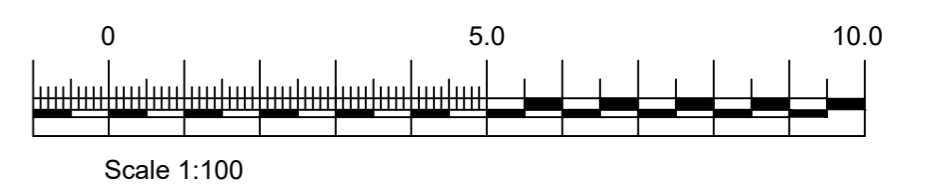
|        |                                   |
|--------|-----------------------------------|
| Green  | - As Approved But Not Constructed |
| Blue   | - As Actually Constructed         |
| Yellow | - To be Demolished                |
| Red    | - Proposed for Construction       |



| Block | Door no.     | Internal Area | External Area |            |           | Int+Front   |
|-------|--------------|---------------|---------------|------------|-----------|-------------|
|       |              |               | Front         | Back       | Side      |             |
| H     | Apartment 11 | 125.55 s.m.   | 40.42 s.m.    | 64.96 s.m. | 9.46 s.m. | 230.93 s.m. |
| G     | Apartment 11 | 83.07 s.m.    | 26.18 s.m.    | -          | -         | 103.25 s.m. |
| G     | Apartment 12 | 91.11 s.m.    | 12.48 s.m.    | -          | -         | 103.59 s.m. |
| F     | Apartment 11 | 86.55 s.m.    | 14.83 s.m.    | -          | -         | 101.38 s.m. |
| F     | Apartment 12 | 93.60 s.m.    | 14.50 s.m.    | -          | -         | 108.10 s.m. |



Proposed Penthouse Floor



**C.R.P.D. Note:**

- ALL LINES THAT MAY BE INDICATING STEPS FOR ACCESS FOR ALL ARE < 15mm THRESHOLD;
- EXTERNAL SURFACES ARE NON-SLIP

|        |                                   |
|--------|-----------------------------------|
| Green  | - As Approved But Not Constructed |
| Blue   | - As Actually Constructed         |
| Yellow | - To be Demolished                |
| Red    | - Proposed for Construction       |





Proposed Basement Floor ( Level -1)

**C.R.P.D. Note:**

- ALL LINES THAT MAY BE INDICATING STEPS FOR ACCESS FOR ALL ARE < 15mm THRESHOLD;
- EXTERNAL SURFACES ARE NON-SLIP

|  |   |
|--|---|
|  | Green - As Approved But Not Constructed |
|  | Blue - As Actually Constructed          |
|  | Yellow - To be Demolished               |
|  | Red - Proposed for Construction         |





Proposed Basement Floor ( Level -2)

**C.R.P.D. Note:**

- ALL LINES THAT MAY BE INDICATING STEPS FOR ACCESS FOR ALL ARE < 15mm THRESHOLD;
- EXTERNAL SURFACES ARE NON-SLIP

|  |   |
|--|---|
|  | Green - As Approved But Not Constructed |
|  | Blue - As Actually Constructed          |
|  | Yellow - To be Demolished               |
|  | Red - Proposed for Construction         |